



Chad Coburn, Project Manager

Mappers and Planners

Implementation Team Meeting

August 10, 2011



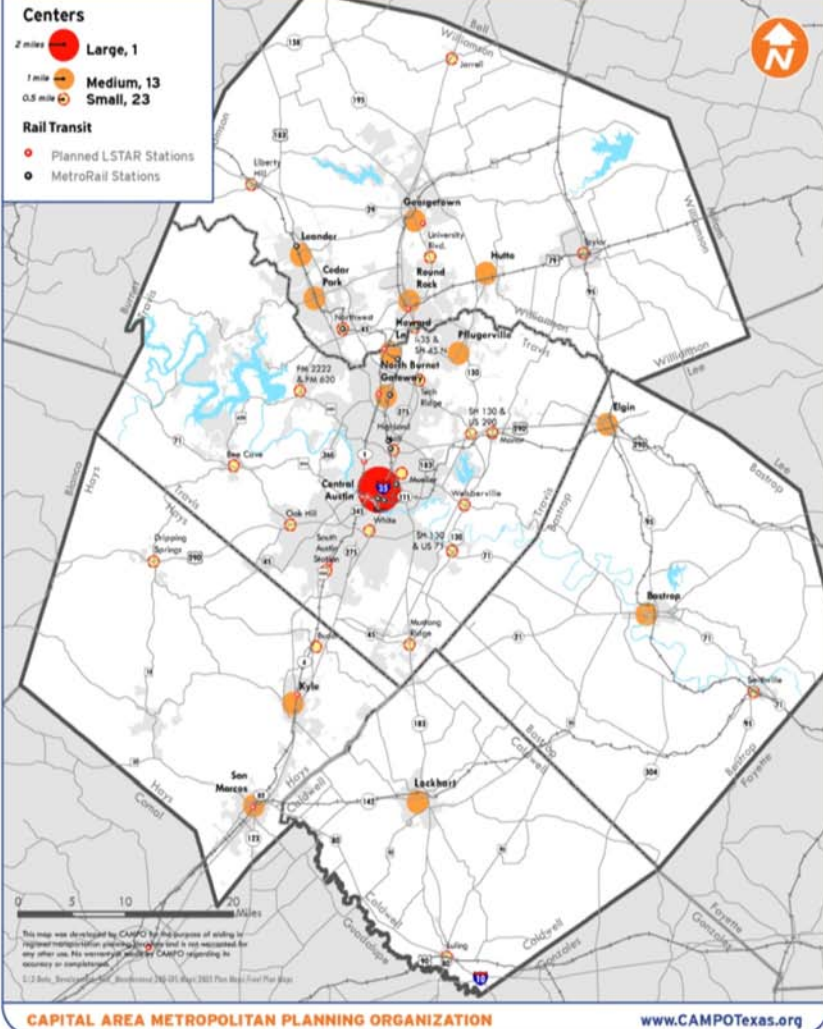
CAMPO 2035 Plan





Congestion of no-build scenario





activity center data

	Current	2035 Target
Population	16%	31%
Employment	36%	38%

CAMPO activity centers concept

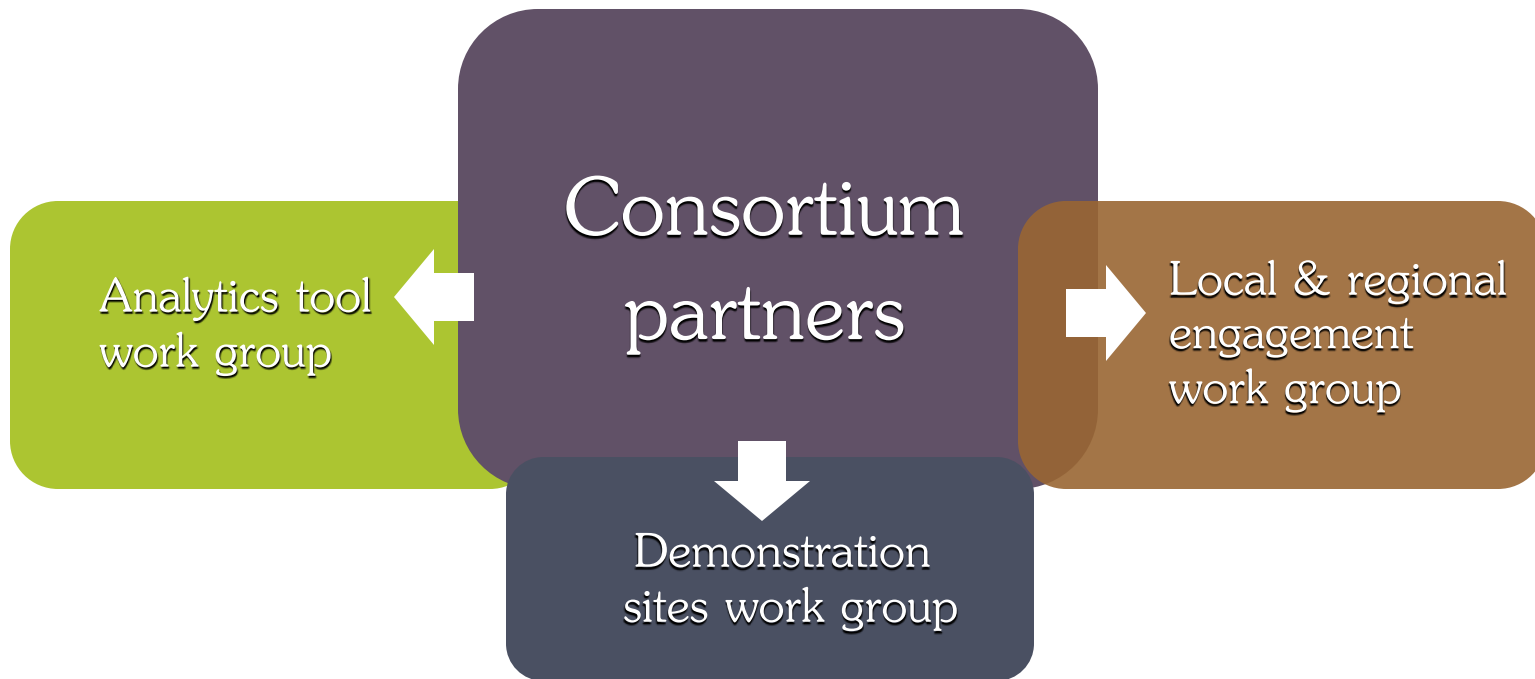


FY 2012-14 Call for Applications

\$78.6 M; 50% to Activity Centers

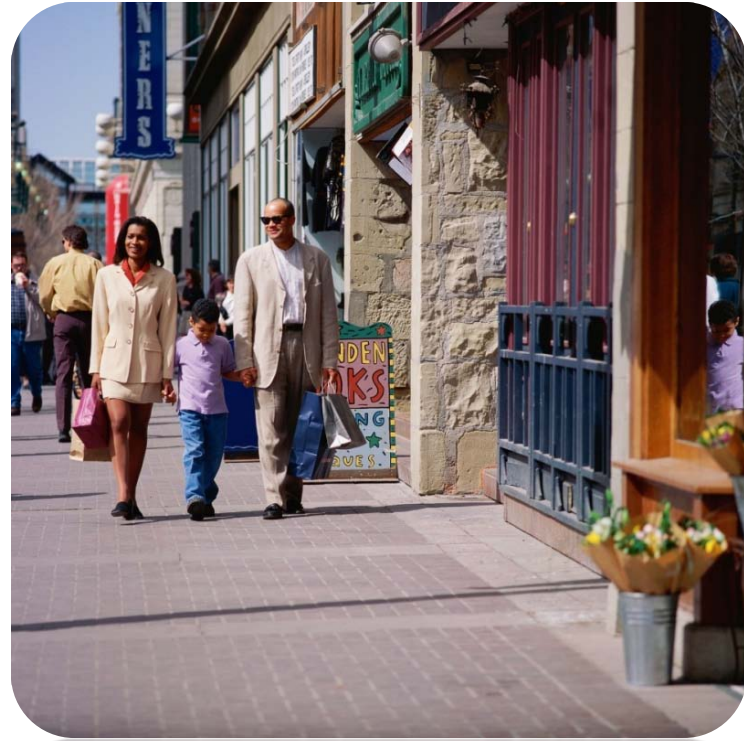
CAMPO STP MM

SUSTAINABLE
PLACES Project



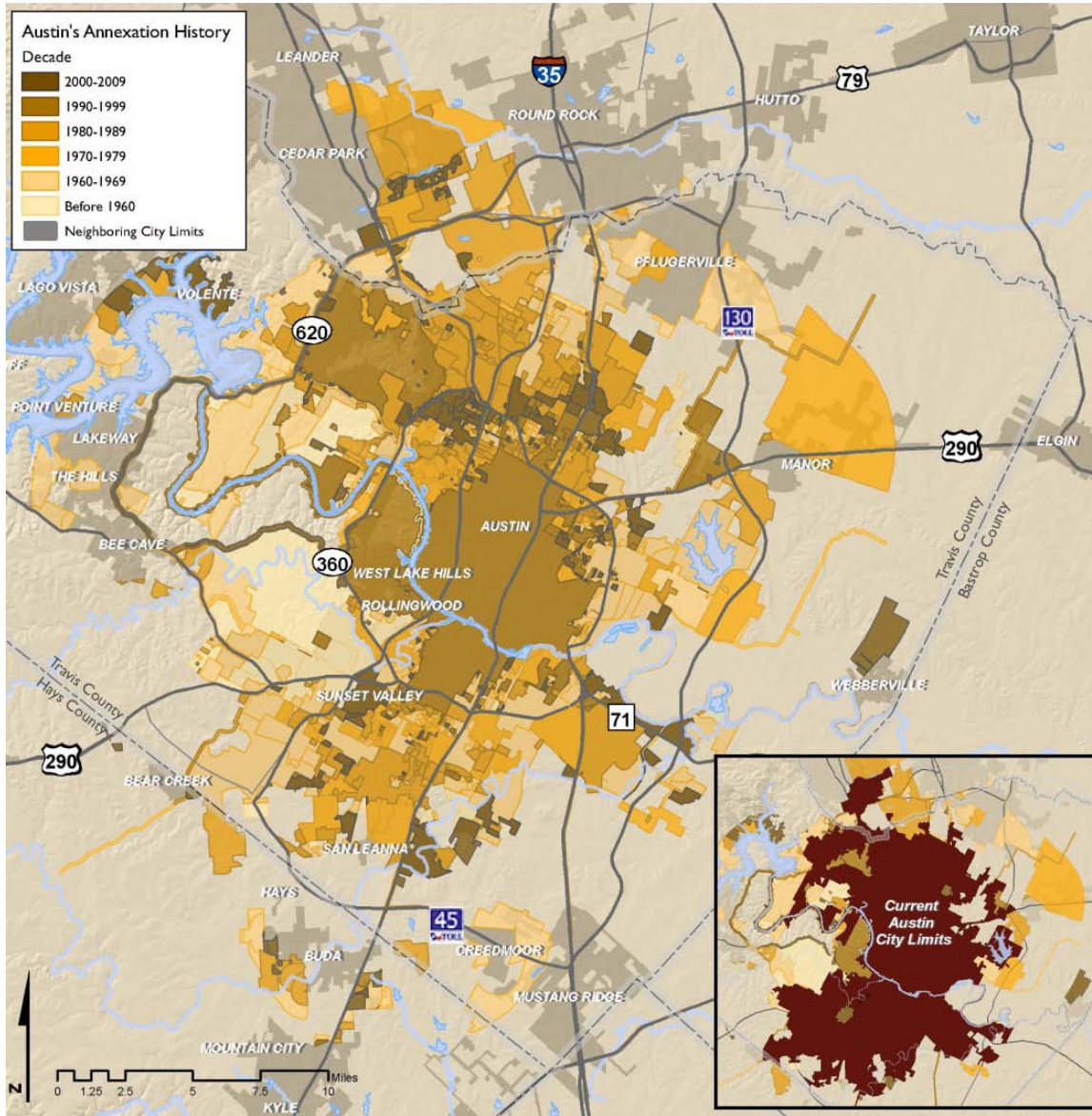
Capital Area Texas Sustainability Consortium

SUSTAINABLE
PLACES Project



Demonstration site planning and public engagement

SUSTAINABLE
PLACES Project



Analytics tool & land use scenarios

SUSTAINABLE
PLACES Project



Samples: predict BMI for different LU scenarios/street connectivity

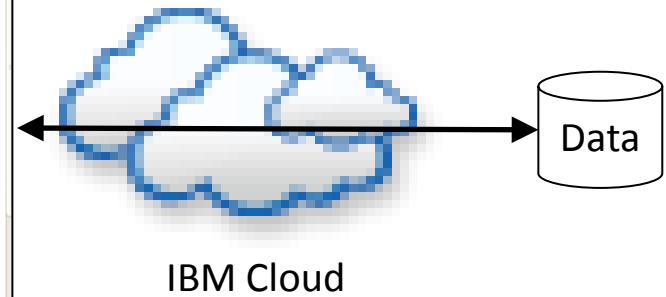
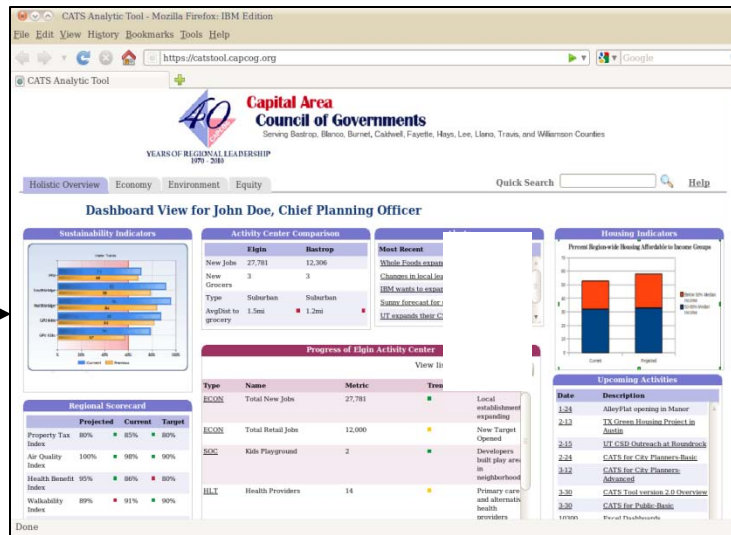
Fiscal impact on jurisdictions w/better connections between jobs, housing, and transit

Indicators

SUSTAINABLE
PLACES Project



Planners
Public Officials
General Public



Analytics tool development

SUSTAINABLE
PLACES Project



Q & A

August 10, 2011