



# Community Action Network Community Council

New Member Orientation 11/21/11



# Community Action Network is...

---

a partnership of agencies,  
organizations and individuals  
who work together to  
enhance the social, health,  
educational and economic  
well-being of Central Texas.



# CAN's role is...

---



- ▶ to enhance awareness of community issues,
- ▶ to strengthen partnerships, and
- ▶ to support collaborative strategies to improve the well-being of all people in our community.

# CAN Partners – working to promote equity and opportunity

Government	Educational Institutions	Healthcare	Private/Other
City of Austin*	Austin Community College*	Austin Travis Co Integral Care	Austin Chamber of Commerce
Travis County*	Austin ISD*	Central Health*	Capital Metro*
	St. Edward's University	Seton Healthcare Family	Community Justice Council
	University of Texas at Austin	St. David's Foundation	One Voice Central Texas
	Workforce Solutions – Capital Area		Interfaith Action Central Texas (iACT)
			United Way Capital Area

\* *taxing entities*

# Policy, Community, and Service

---



Policy  
makers

- CAN Board of Directors - elected officials and policy makers representing each CAN partner organization



Community  
members

- CAN Community Council – self-appointed board of community members with an annual application and election process



Service  
providers

- Issue Area Groups and Implementation Teams - professionals who serve our community through agencies or non-profit organizations

# Role of Community Council

---

- ▶ The Community Council provides a communication link between the community at large and the CAN Board of Directors. Its duties are to:
  - ▶ Act as a liaison between the CAN Board of Directors and the community.
  - ▶ Raise community awareness about issues by providing a non-partisan forum for the exchange of information on community conditions and efforts to address needs.
  - ▶ Foster, encourage and enhance collaborative efforts whenever possible.
  - ▶ Consider the impacts of recommended collaborative strategies on vulnerable populations and across issue areas.
  - ▶ Report and make recommendations to the CAN Board of Directors.
  - ▶ Encourage community involvement in assessment, planning, and implementation processes.

from CAN bylaws approved 11/13/09

# Membership Agreement

---

1. Attendance
2. You represent “YOU” no one else
3. Try to analyze issues from a broad community interest
4. Respect for others and for all ideas



# CAN Community Dashboard

---

- ▶ snapshot of community's well-being
- ▶ identifies areas where collective attention and action are needed
- ▶ no partner or agency alone is accountable for any one indicator
- ▶ multiple stakeholders are needed to move any one indicator in the right direction





we are safe, just  
& engaged

- ▶ Violent crime
- ▶ Arrest Demographics
- ▶ Voting



our basic needs  
are met

- ▶ Low-income
- ▶ Housing Cost Burdened
- ▶ Vehicle miles traveled
- ▶ Homelessness



we are  
healthy

- ▶ Health insurance
- ▶ Mental Health
- ▶ Smoking
- ▶ Obesity
- ▶ Air quality



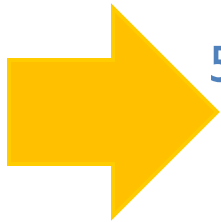
we achieve our  
full potential

- ▶ Kindergarten ready
- ▶ High school graduation
- ▶ College ready
- ▶ Unemployment

# Building a Community Dashboard

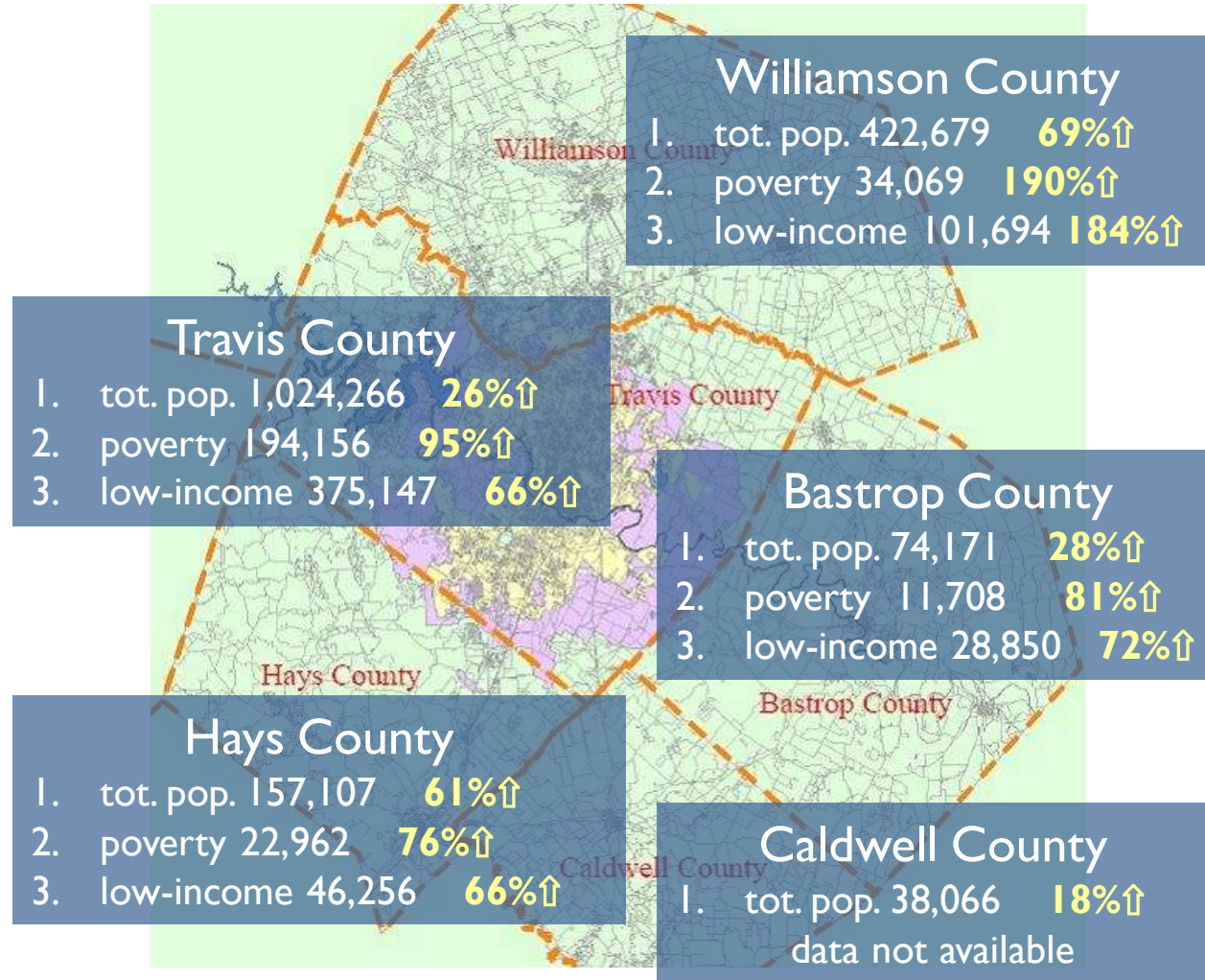
---

1. Common Vision (2008)
2. Community Indicators (2009)
3. Baseline – first annual report (2010)
4. Set Goals and Targets (2011)
5. Plans and strategies to move the indicators in the right direction (2012)



# Austin-Round Rock MSA 2000 - 2010

1. 2010 Population # and % Growth since 2000
2. 2010 Federal Poverty Level # and % Growth since 2000
3. 2010 Low Income (200% of FPL) and % Growth since 2000



Source: U. S. Census Bureau (American Community Survey 1-Yr. Estimates and Decennial Census)

# Austin-Round Rock MSA

---

- ▶ One of the fastest growing MSA's in the nation
- ▶ Growth is putting pressure on infrastructure
- ▶ Poverty and low-income populations are growing at a faster rate than the total population
- ▶ Significant demographic shifts
  - ▶ Increasingly diverse population with highest rates of increase among Asian and Hispanic populations
  - ▶ Large and fast-growing Hispanic child population
  - ▶ Fastest growing pre-senior population and second fastest growing senior population in the nation

# CAN Community Dashboard



**we are safe,  
just & engaged**

**violent crime  
arrest  
proportionality  
voting**



**our basic  
needs are met**

**low-income  
housing cost burden  
vehicle miles  
traveled  
homelessness**

**Equity and  
Opportunity**

**health insurance  
mental health  
smoking  
obesity  
air quality**



**we are  
healthy**



**we achieve our  
full potential**

**kinder ready  
graduation  
college ready  
employment**

# Why a Strategic Framework for Action?

---

- ▶ To provide a common language for talking about how we can work together
- ▶ To see ourselves and our programs in the context of a larger framework
- ▶ To better understand the inter-relationships between and among these four areas of our community life
- ▶ To identify new connections and opportunities to partner
- ▶ Provides a road map of strategies to move the indicators in the right direction

# We are safe, just & engaged

---

promote safe communities



embrace diversity



engage and empower people



We are safe, just & engaged

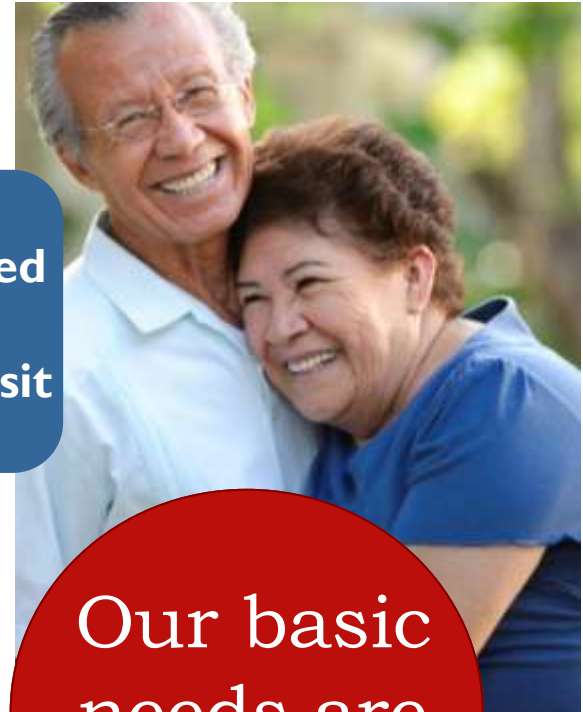
Informed by...

- *Imagine Austin Comprehensive Plan*
- Travis County Reentry Roundtable
- Community Justice Council
- *Travis County Community Justice Plan (for CAPCOG)*



# Our basic needs are met

---



Informed by...

- *ECHO Plan to End Community Homelessness*
- *NHCD Austin Housing Market Study*
- *NHCD Five Year Comprehensive Plan*
- *HousingWorks, RECA, AARO & ULI Building and Retaining an Affordable Austin*
- *CAMPO 2035 Plan*
- *CAN Stable Families, Healthy Communities Plan*
- *City of Austin Imagine Austin Comprehensive Plan*



Our basic needs are met

# We are healthy

---

access to  
clinical care &  
prevention  
services



promote  
healthy  
behaviors



healthy and  
safe community  
environment



We are  
healthy

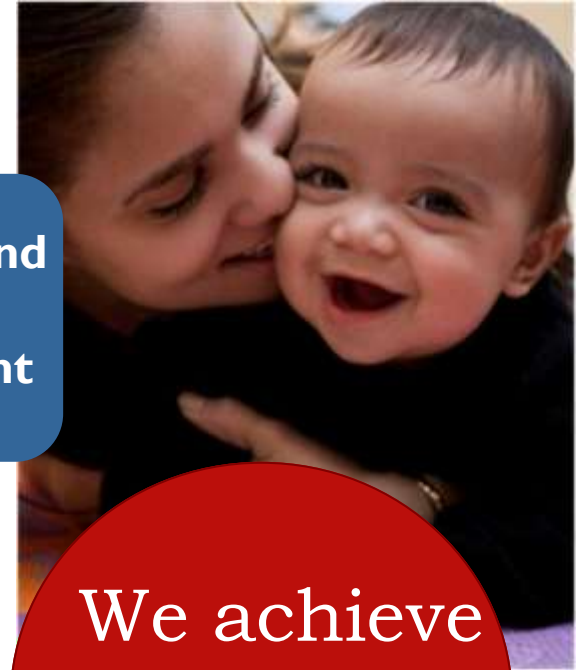
Informed by...

- Chronic Disease Coalition *Tobacco Prevention and Control Strategic Plan*
- Central Health's *Health and Health Care Trends & Innovations in Central Texas*
- ATCIC *Local Service Area Plan*
- CAPCOG Clean Air Coalition
- Austin/Travis County *Community Health Improvement Plan* (under development)



# We achieve our full potential

---



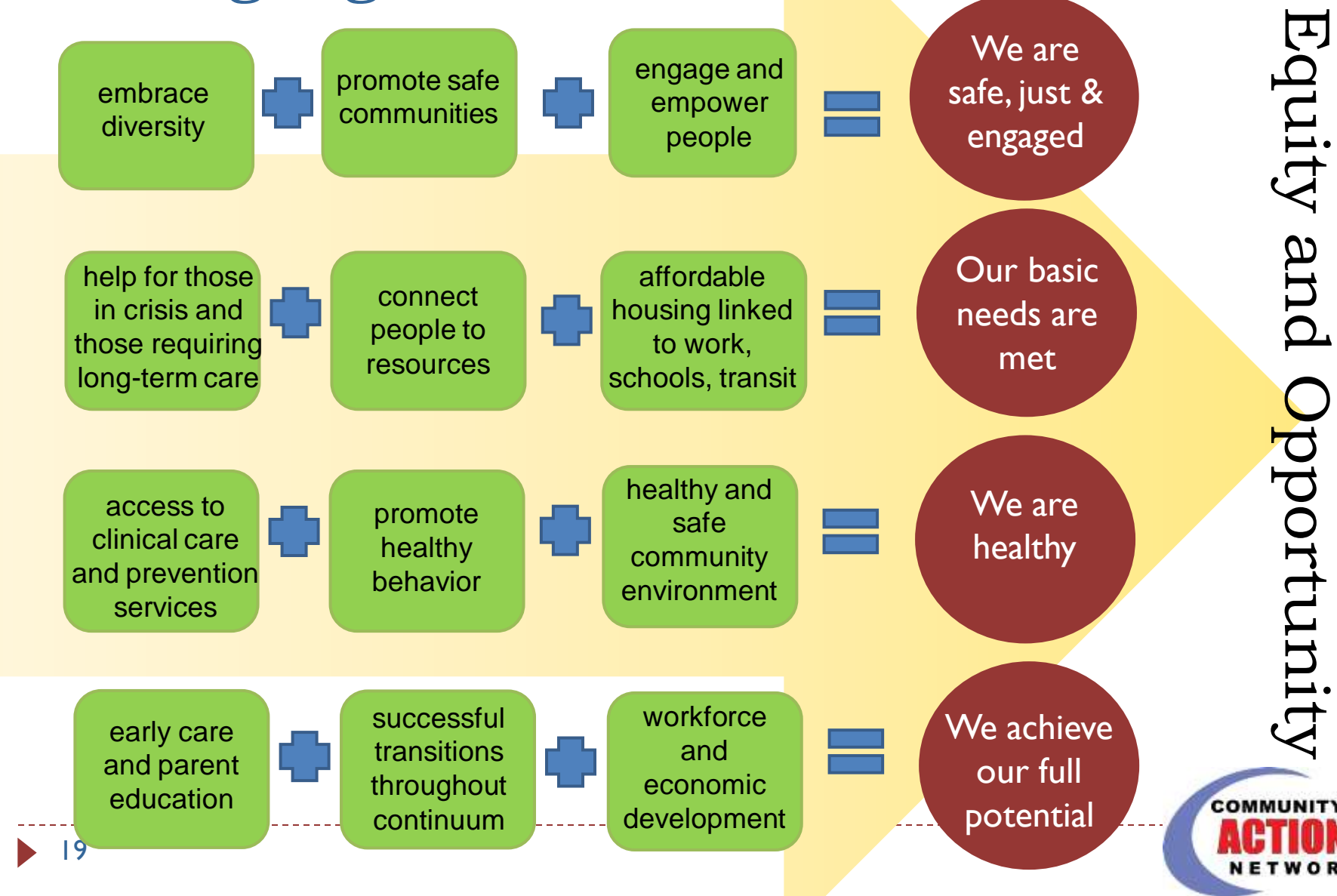
Informed by...

- Success by Six
- Austin ISD *Strategic Plan*
- E3 Alliance *Blueprint for Educational Change*
- Workforce Solutions-Capital Area and CAPCOG *State of the Workforce Report*
- Greater Austin Chamber of Commerce
- City of Austin *Imagine Austin* Comprehensive Plan
- *Pathway to Prosperity* (under development)



We achieve our full potential

# Strategic Framework – a road map for working together



# All areas are inter-related



**We are  
safe, just &  
engaged**



**We are  
healthy**

**Equity and  
Opportunity**



**Our basic  
needs are  
met**



**We achieve  
our full  
potential**

# Community Council Leaders

---

- ▶ Community Council Executive Committee represents the CAN Community Council on the
  - ▶ CAN Executive Committee and
  - ▶ CAN Board of Directors
- ▶ Sylvia Blanco, 2012 Chair
- ▶ Stefan Molina, 2012 Chair-Elect
- ▶ Jim Reed, 2012 Past Chair

# CAN Staff and Resources

---

- ▶ Vanessa Sarria, Executive Director
- ▶ Mary Dodd, Assistant Director
- ▶ Chantel Bottoms, Sr. Research Analyst
- ▶ [www.caction.org](http://www.caction.org)
- ▶ [www.cancommunitydashboard.org](http://www.cancommunitydashboard.org)
- ▶ CANews
- ▶ Twitter: @CAN\_Austin