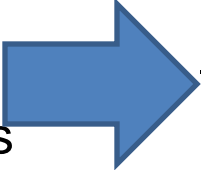


AISD Child Study Team Process

Organizational Approach to Provide
Integrated Support For All Students

Framing the Problem

- Need to align services to address district goals within the Strategic Plan
 - Need for universal screening tools to identify students requiring early intervention
 - Need to refine existing systems and structures to make it more campus friendly and accessible
 - Need to develop efficient data systems to document and progress monitor service delivery
- 
- To identify and address barriers to learning
 - To provide early intervention through systematic identification of at-risk students
 - To address instructional time through the reduction of discipline issues
 - To decrease overrepresentation of ethnic and economic minorities in special education and discipline referrals
 - To improve student attendance

Child Study Team Model

Behavior

- Student centered planning
- Customized function-based interventions
- Frequent progress monitoring to guide intervention design

Academics

- More intense supplemental targeted skill interventions
- Customized interventions
- Frequent progress monitoring to guide intervention design

Few

Some

- Supplemental targeted function-based interventions
- Small groups or individual support
- Frequent progress monitoring to guide intervention design

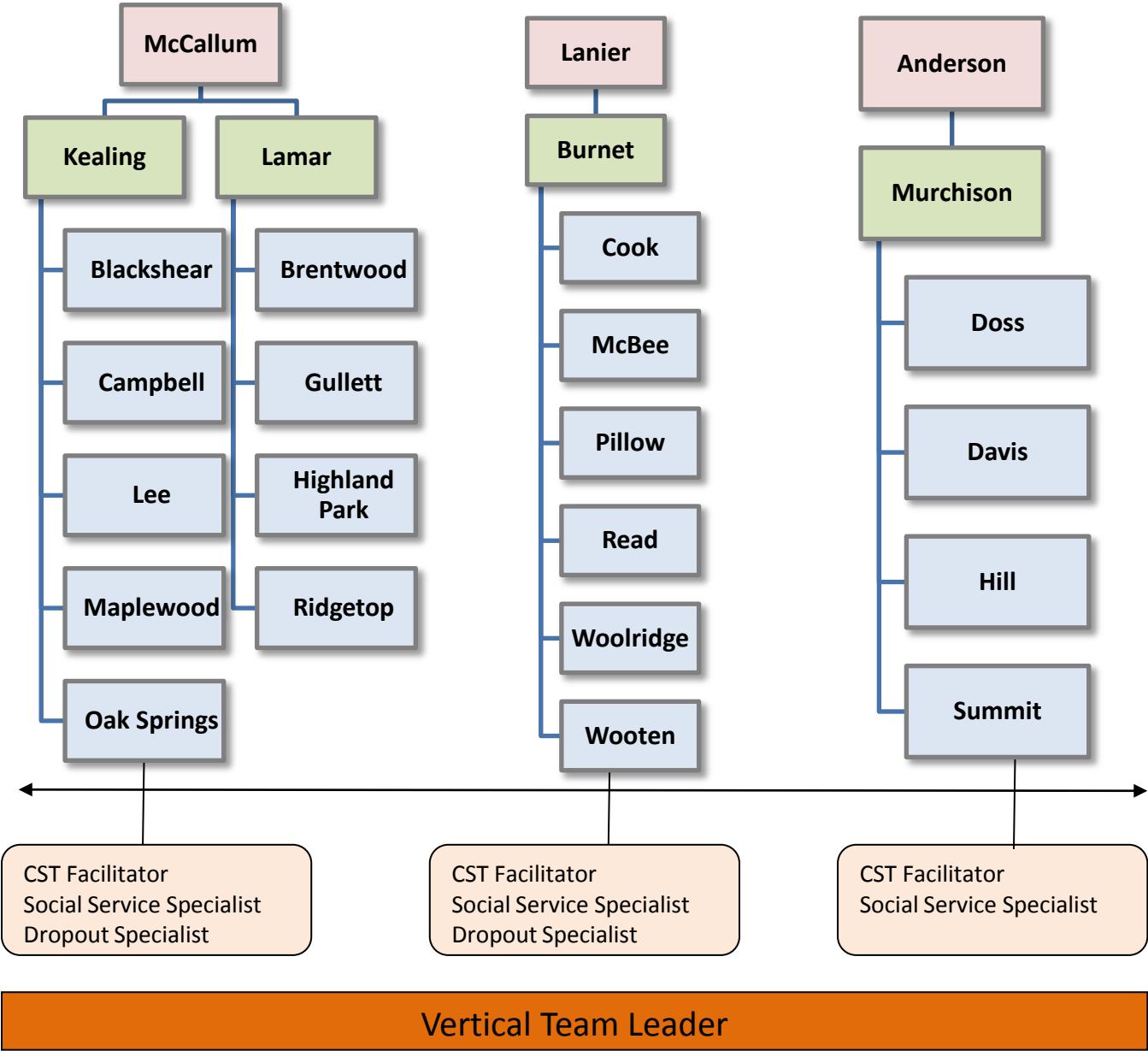
- Supplemental targeted skill interventions
- Small groups
- Frequent progress monitoring to guide intervention design

All

- All students, All settings
- Positive behavioral expectations explicitly taught and reinforced
- Consistent approach to discipline
- Assessment system and data-based decision making

- All students
- Evidence-based core curriculum & instruction
- Assessment system and data-based decision making

Sample Campus Distribution By Vertical Team Leader



- Factors Considered
- ASID Vertical Team Assignment
 - Actual Enrollment
 - Feeder Patterns
 - School and Student Characteristics
 - Service Needs
 - Geographical Proximity

Resource Allocation by Vertical Team

