



# Community Action Network Community Dashboard

Gauging our progress together.

# CAN Community Dashboard

---

- ▶ **2008:** agreed on a common vision for all people in our community.
- ▶ **2009:** selected 16 social indicators to gauge whether we are moving closer to that vision.
- ▶ **2010:** first CAN Community Dashboard was published & indicators were focus of Community Council forums.
- ▶ **2011:** Dashboard Steering Committee will begin to set goals and targets for the indicators.



# 2010 Community Council Forums

---

1/11	Low income	Basic Needs Coalition & CPPP
2/18	Ready for kindergarten High school graduation College ready	E <sup>3</sup> Alliance, AISD, City/County/AISD Truancy Plus Task Force
4/19	Housing cost burdened Homeless housing services	City of Austin NHCD, HousingWorks, ECHO
5/17	Vehicle miles traveled Air quality	RTCC, CAMPO, Clean Air Coalition, CAPCOG, Austin Energy
7/19	Unemployment	Workforce Solutions-Capital Area, ACC, AISD, Literacy Coalition
8/16	Percent with no health insurance Obesity & Smoking	Central Health City of Austin Chronic Disease Task Force
8/30	Violent crime rate Arrest demographics	Community Justice Council
10/18	Mental Health	ATCIC, Mayor's Mental Health TF, Children & Youth Mental Health PP
11/15 3	Voter participation	Travis County Clerk, Vote Rescue, Austin Interfaith Annette Strauss Center for Civic Engagement

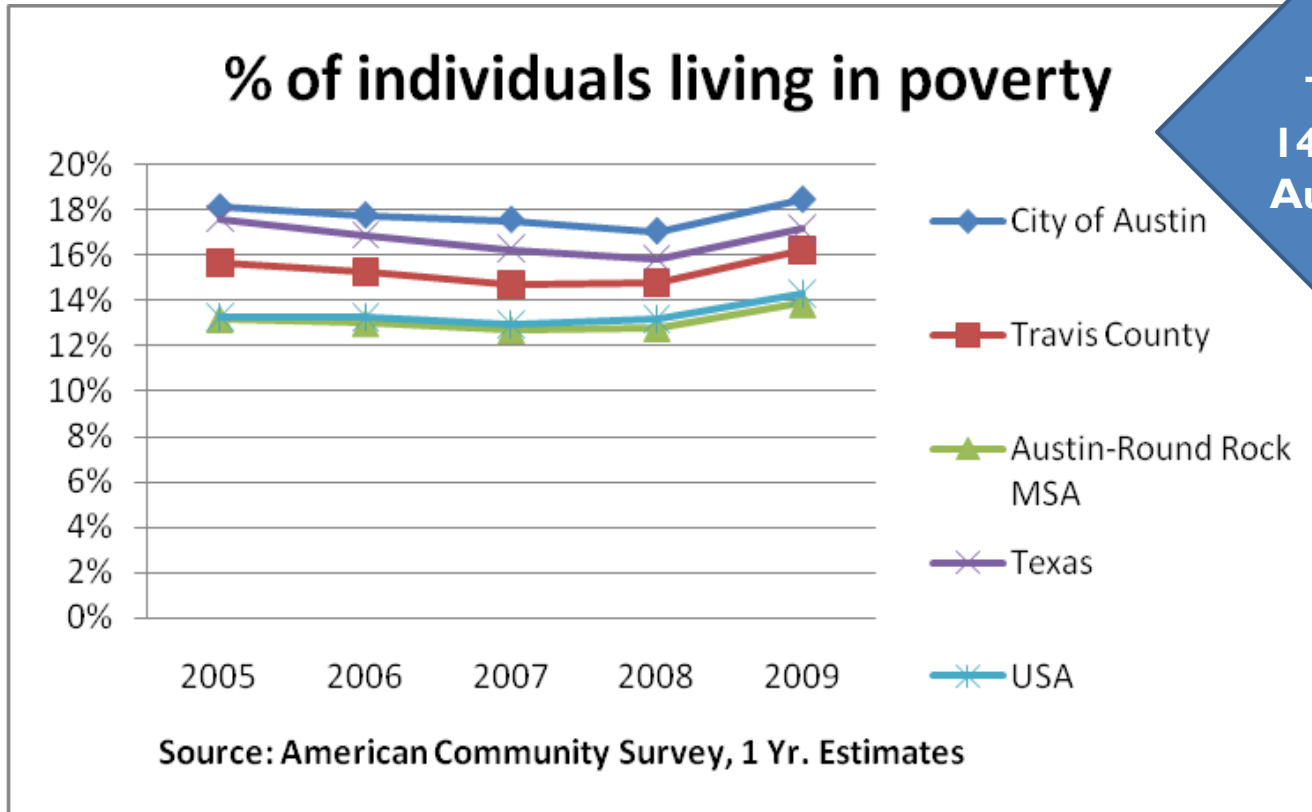
# Federal Poverty Guidelines

---

Persons in family	Poverty guideline
1	\$10,830
2	14,570
3	18,310
4	22,050
5	25,790
6	29,530
7	33,270
8	37,010

For families with more than 8 persons, add \$3,740 for each additional person.

# People living in poverty



163,630 people in Travis County and 142,930 in the City of Austin live in poverty.

# Racial Inequities

---

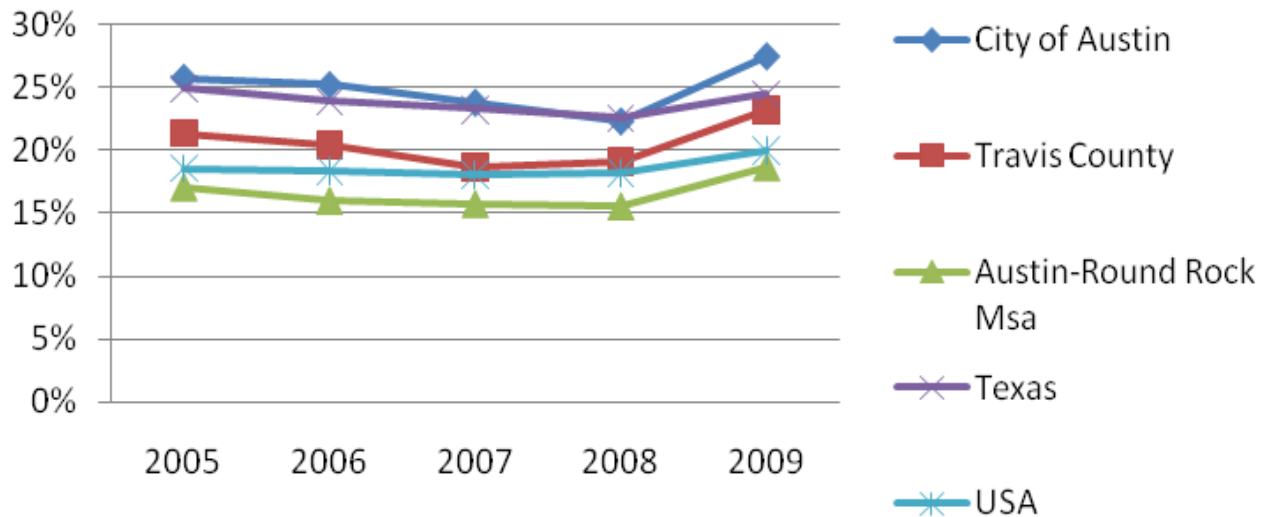
## Travis County poverty rates by race and ethnicity:

- ▶ 27% of all Hispanics
- ▶ 21% of all African Americans
- ▶ 10% of all Asians
- ▶ 10% of all non-Hispanic Whites



# Age Inequities

## % of children and youth under the age of 18 who live in poverty



Source: American Community Survey, 1 Yr. Estimates

56,690 children in Travis County and 47,608 in the City of Austin live in poverty.

# The impact of childhood poverty

---

- ▶ Boys are three times more likely to be incarcerated as adults.
- ▶ Girls are five times more likely to have a child out of wedlock before the age of 21.
- ▶ As adults, they complete two fewer years of schooling.
- ▶ As adults, they earn half as much as children raised in non-poor households.



For more information on childhood poverty and sources for this data, visit

[http://caction.org/faqs/BasicNeeds\\_2010.pdf](http://caction.org/faqs/BasicNeeds_2010.pdf)

# What it cost to get by in Austin MSA

---

2007 estimates by the Center for Public Policy Priorities

<b>Family of 2 adults and 2 children</b>	<b>With Employer Insurance</b>	<b>Without Employer Insurance</b>
Housing	\$836	\$836
Food	\$491	\$491
Child care	\$841	\$841
Medical	\$427	\$1,061
Transportation	\$482	\$482
Other Necessities	\$360	\$334
Monthly Expenses	\$3,437	\$4,045

# “Low-income” is 200% FPL

---

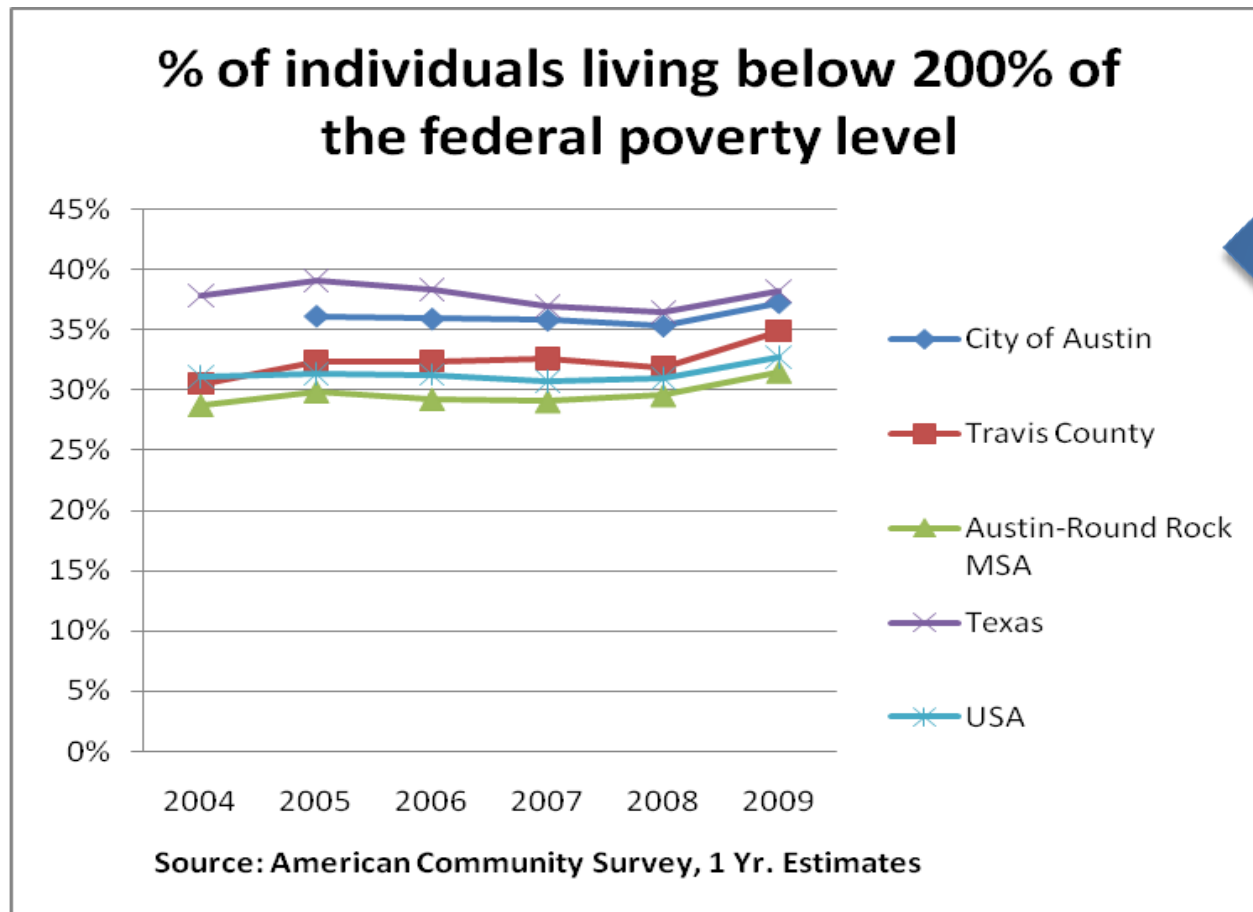
Most researchers and policymakers agree a family must earn at least two times the federal poverty level to meet basic needs.

A family of four is considered to be low-income if they earn **\$44,100**.

[National Center for Children in Poverty](#)

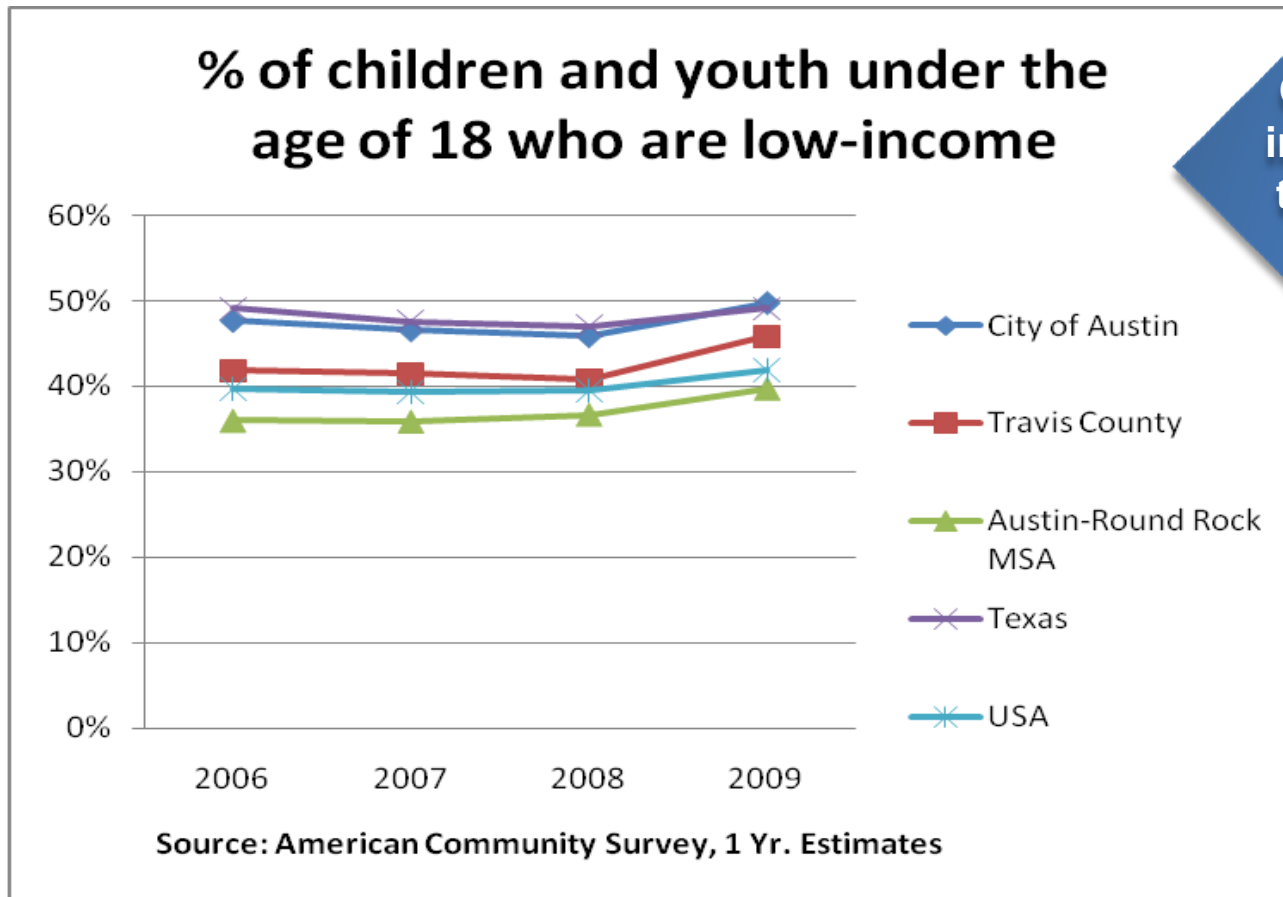


# More than one-third are low income



352,398 people in Travis are low income. 288,836 of them live in the City of Austin.

# One-half of children are low-income



One-half of all children in the City of Austin and the state of Texas were low-income in 2009.

# Impact of low income is far reaching

---

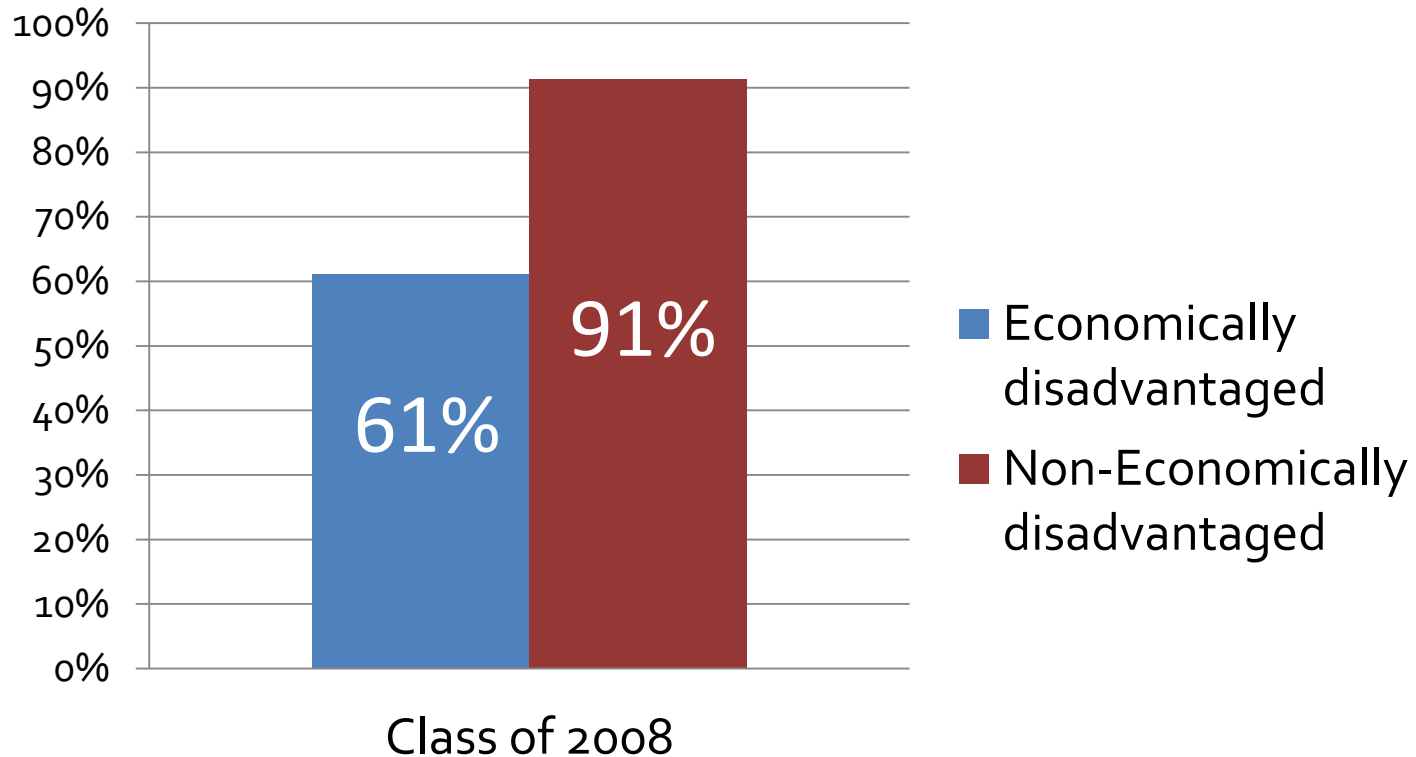
## 2010 Community Council forums revealed people who are low income are...

- ▶ Less likely to graduate in four years
- ▶ Less likely to be “college ready”
- ▶ More likely to smoke and to be obese
- ▶ Less likely to have health insurance
- ▶ More likely to report “poor mental health days”
- ▶ Less likely to find housing they can afford

# % who graduate high school in 4 years

---

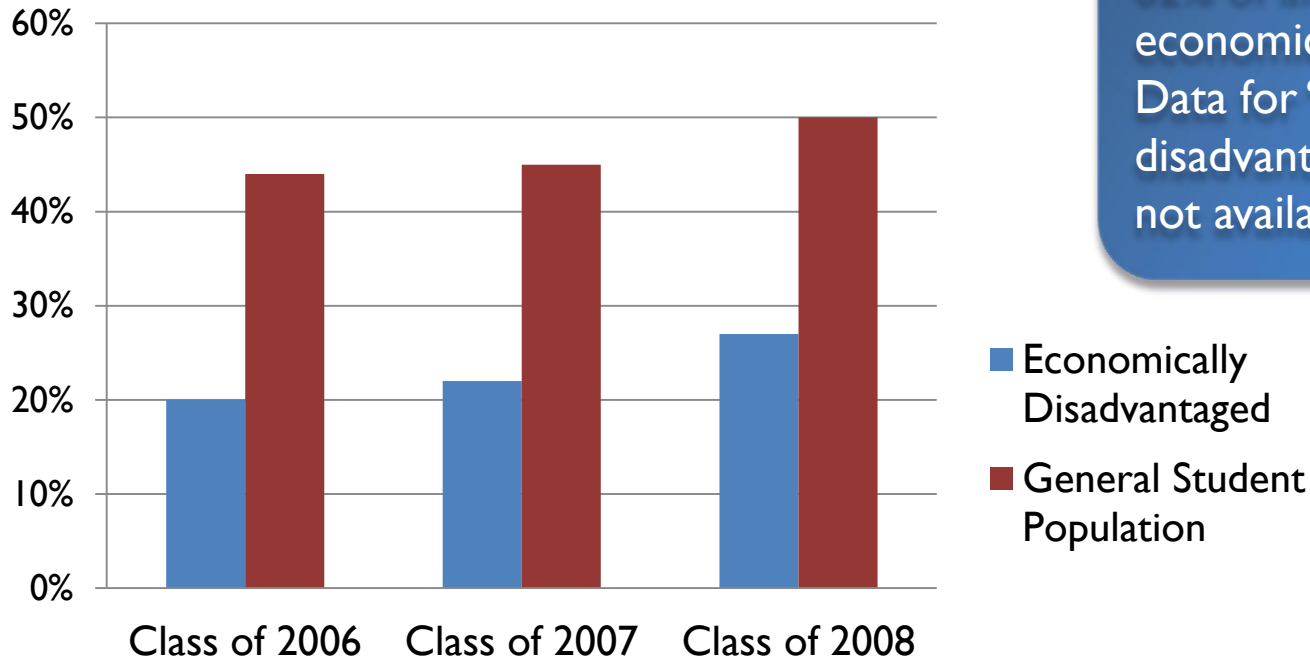
## AISD Four Year Graduation Rate by Income



Source: Texas Education Agency

# % who graduate “college ready”

**% of Austin ISD graduates who are college ready by economic status**



Source: Texas Education Agency

62% of all AISD students are economically disadvantaged. Data for “non-economically disadvantaged” students is not available from TEA.



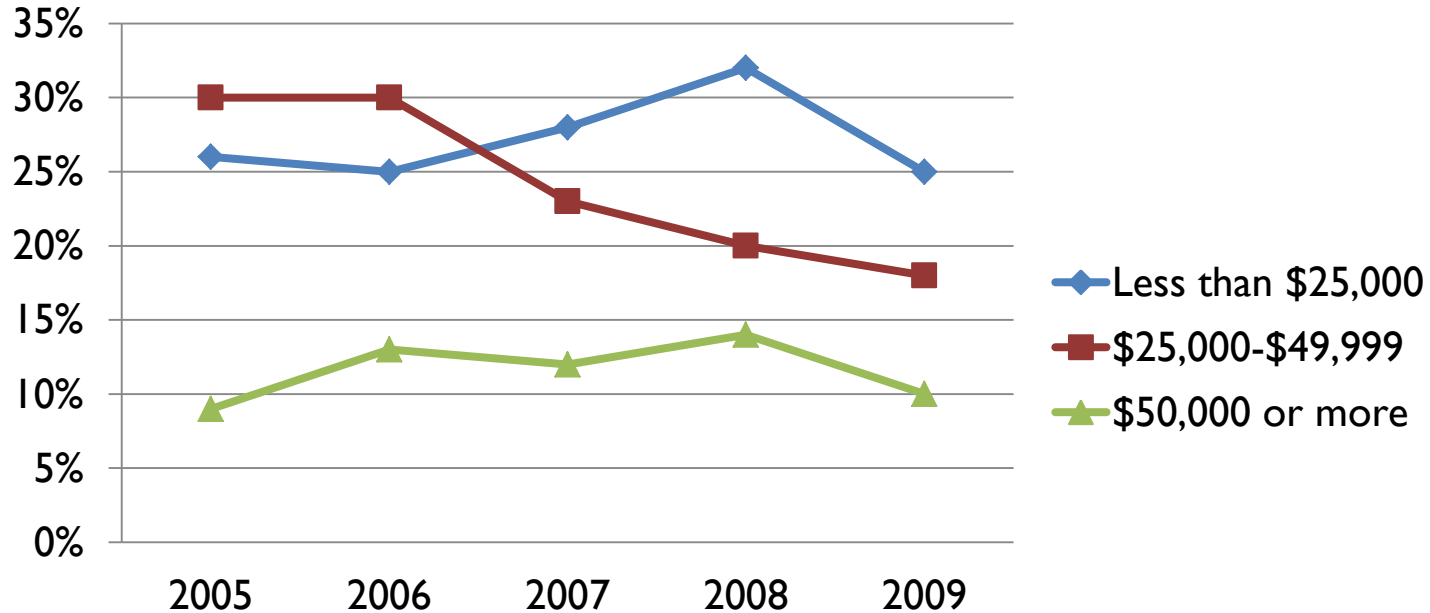
# Workers with no degree are more likely to be unemployed

Education Level	UI Claimants	% Tot. UI Claimants	% Total Population
Less than 9 <sup>th</sup> grade	2,632	5.4%	84% of all Claimants had no post secondary degree
9 <sup>th</sup> to 12 <sup>th</sup> grade, no diploma	3,452	7.1%	
HS grad	12,830	26.5%	
Some college, no degree	21,671	44.7%	
Associate's degree	People with degrees make up 45% of pop, but only 15% of unemployment lines	6.7%	6.8%
Bachelor's degree		2.4%	24.5%
Graduate/prof. degree		7.2%	13.7%

# Austin MSA smokers by income

---

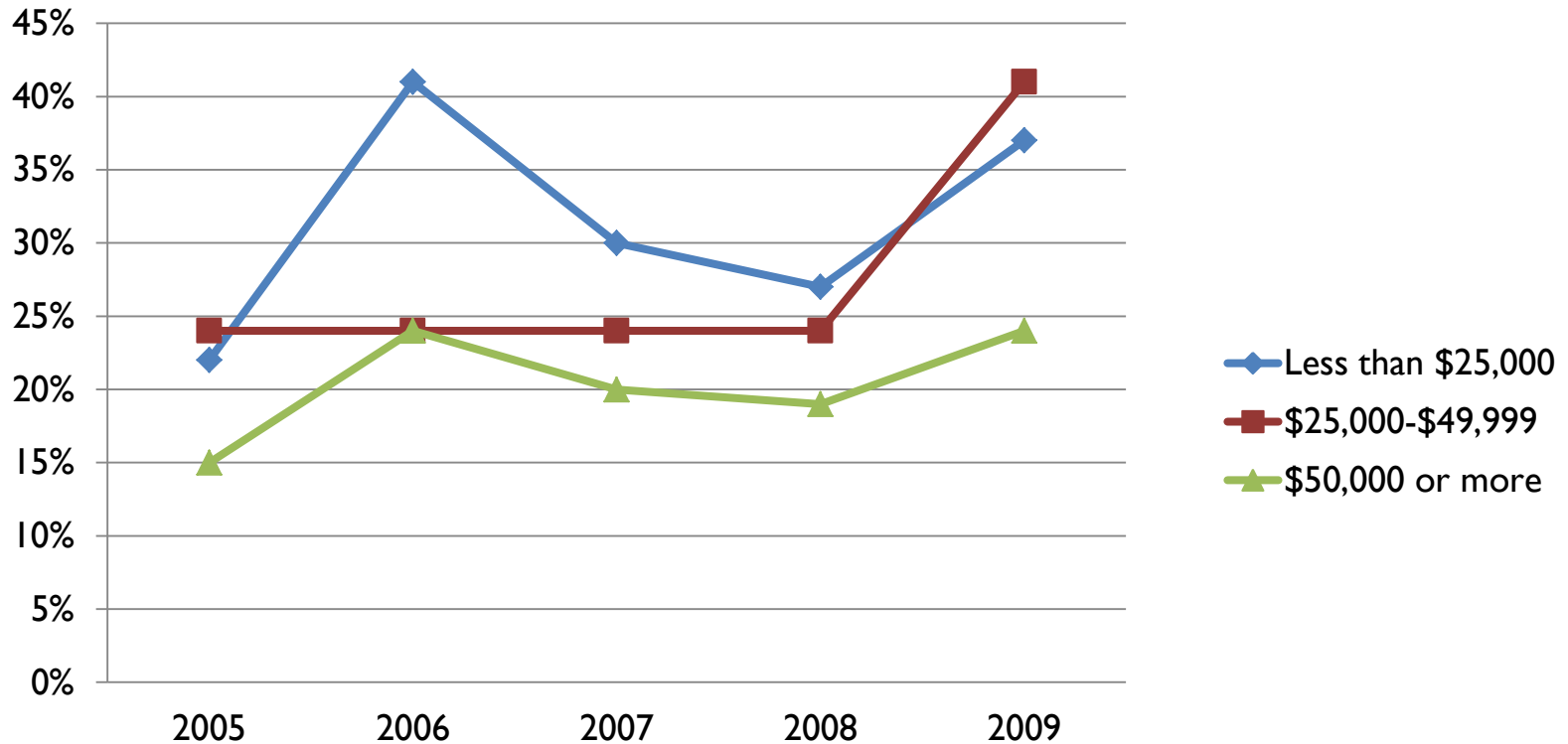
## % of adults who are current smokers by income



Source: Texas Behavioral Risk Factor Surveillance System

# Austin MSA obesity by income

## % of adults who are obese by income

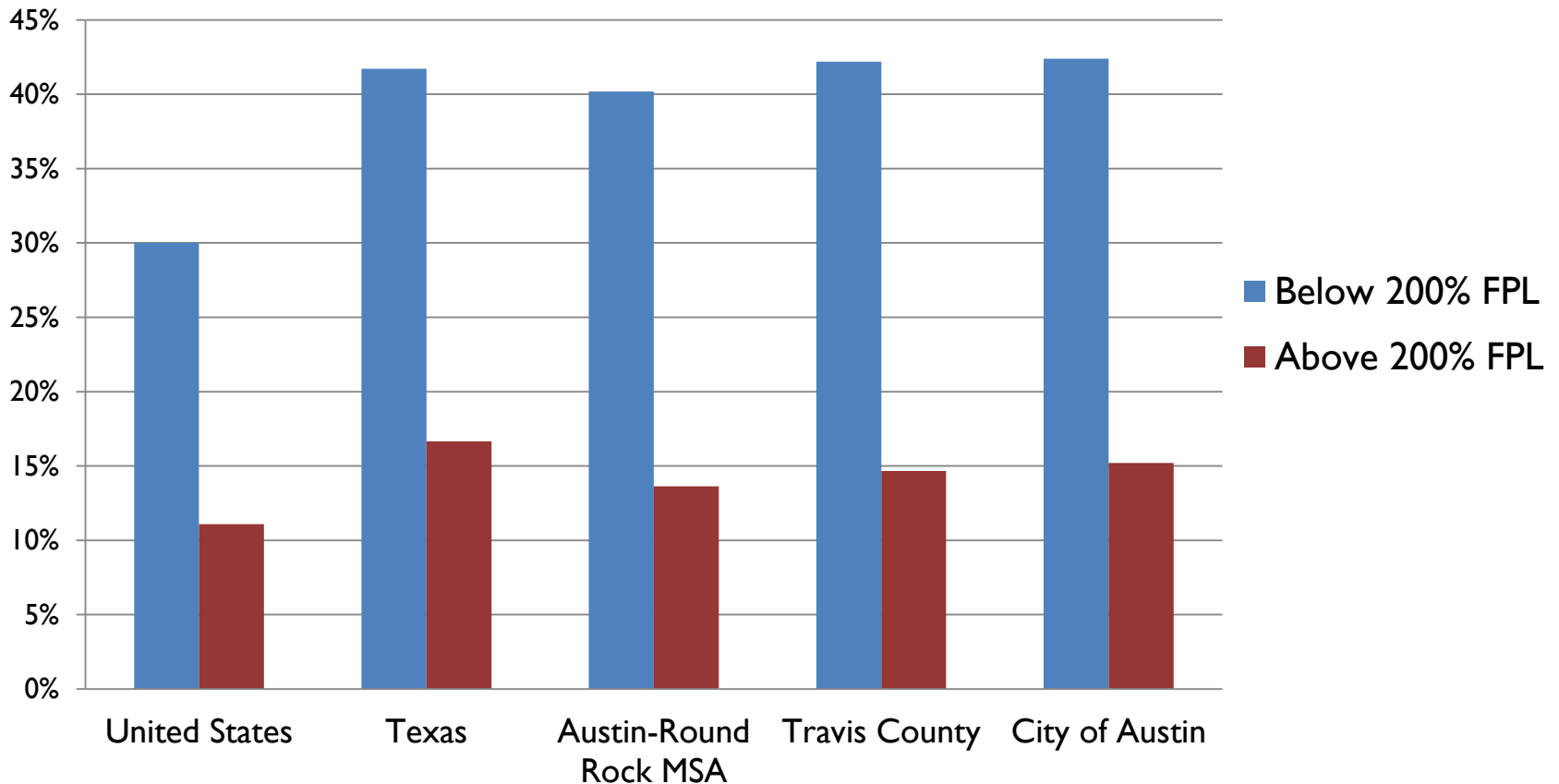


Source: Texas Behavioral Risk Factor Surveillance System



# % with no health insurance

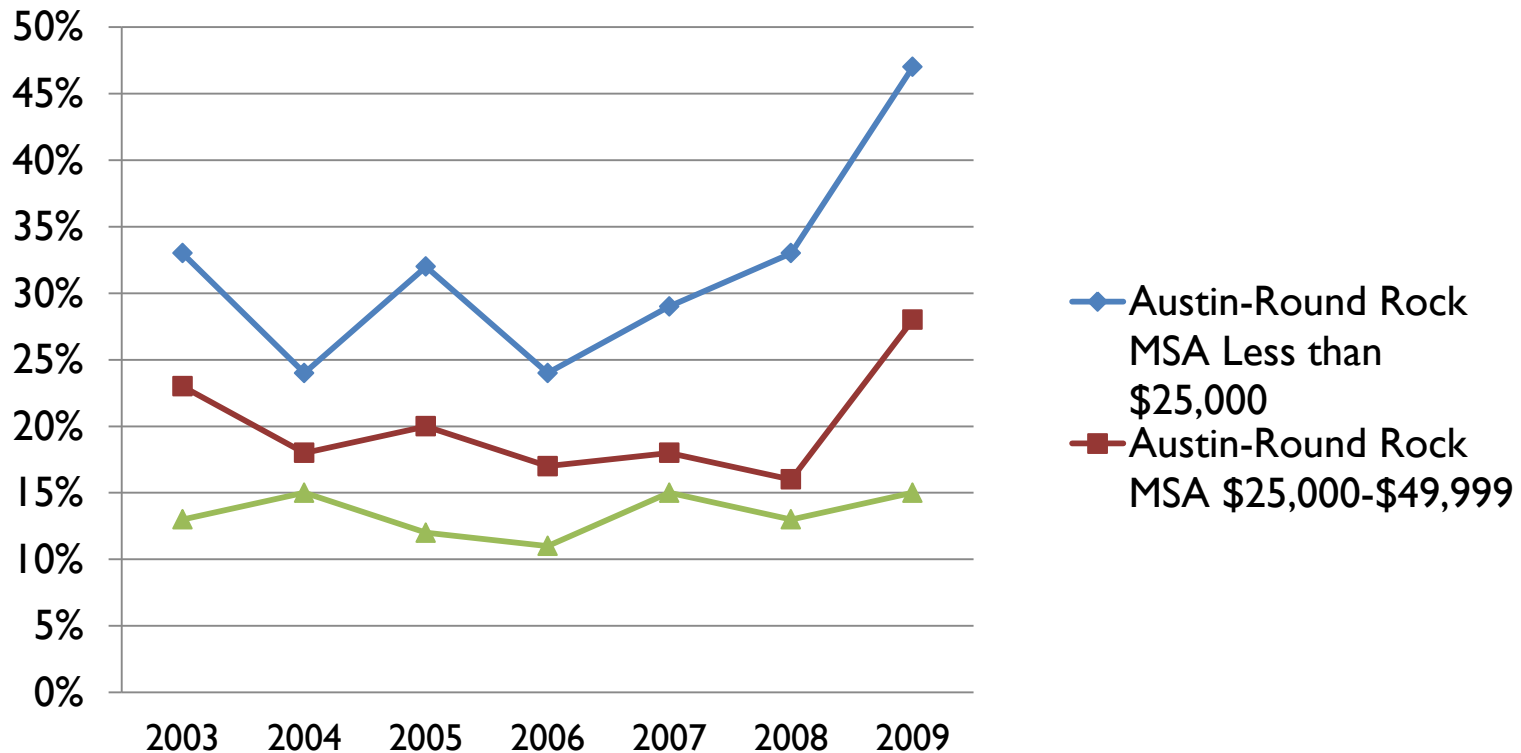
## % under the age of 65 who are uninsured by economic status



Source: American Community Survey, 1 Yr. Estimates



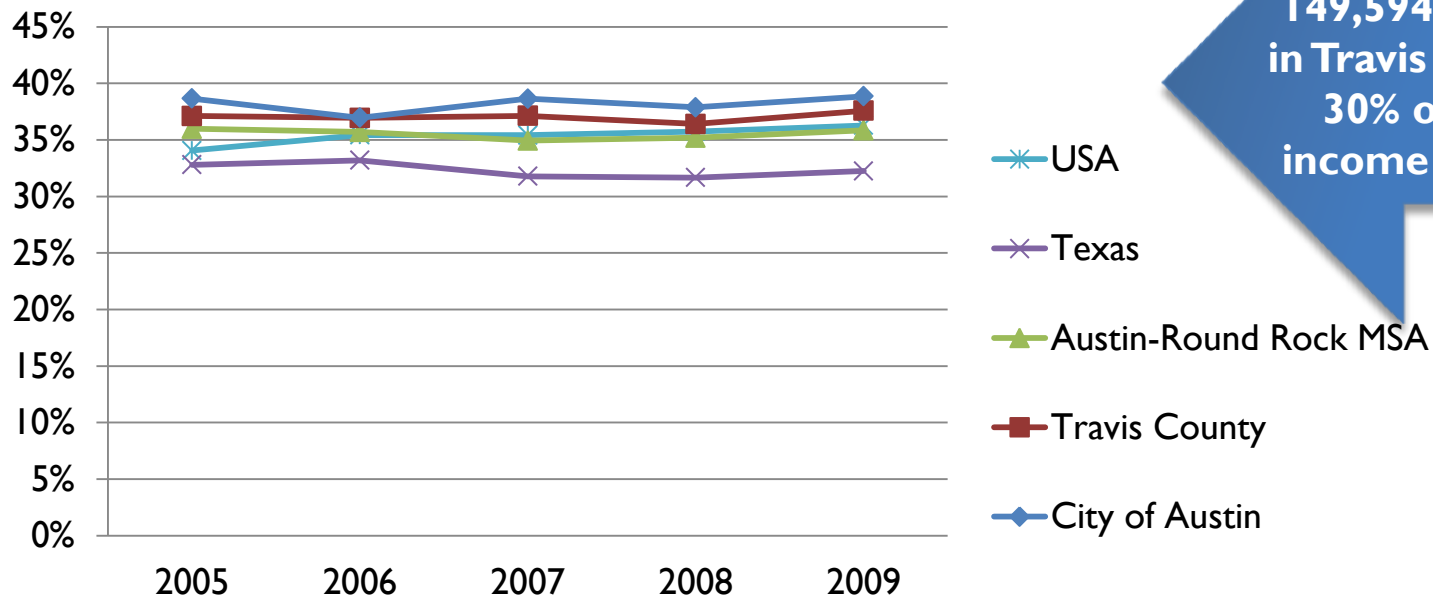
# % reporting 5 or more poor mental health days in the past month



Source: Texas Behavioral Risk Factor Surveillance System

# 38% pay too much for housing

## % of households that are cost-burdened

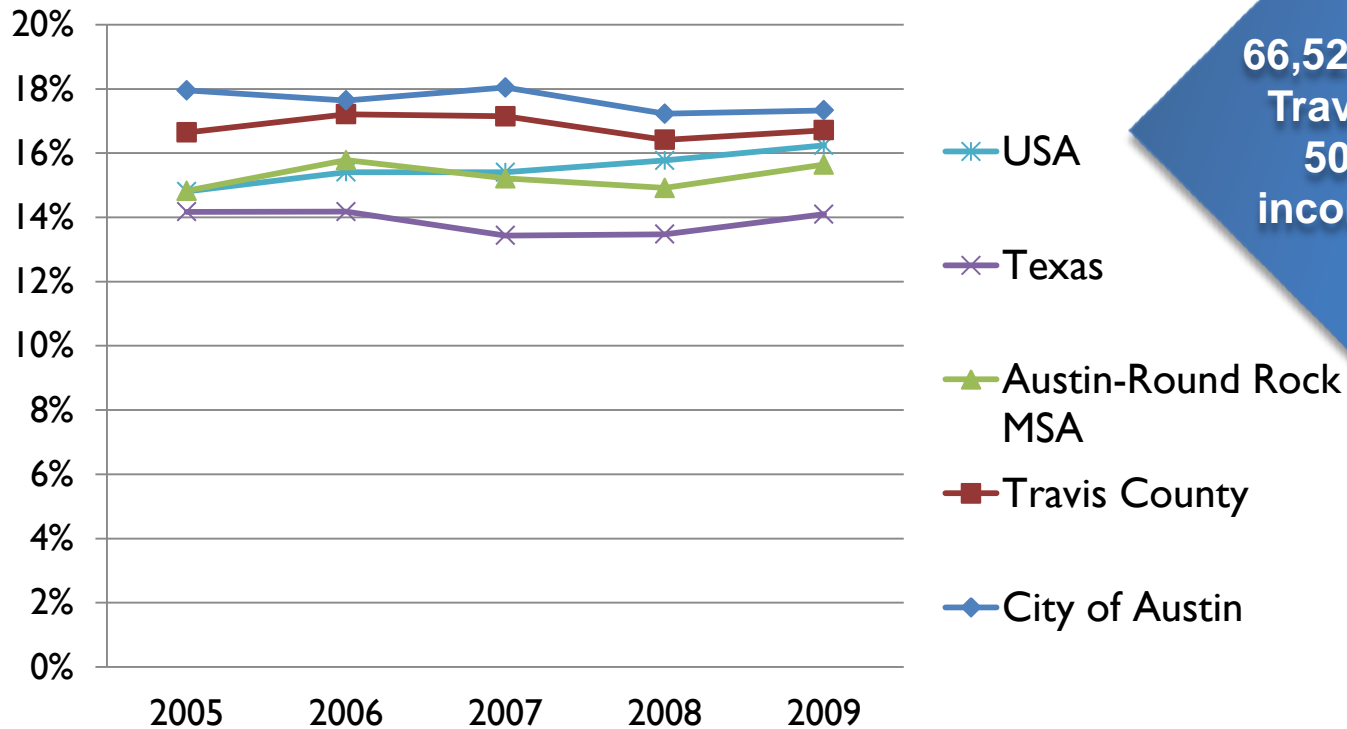


149,594 households in Travis County paid 30% or more of income on housing.

Source: American Community Survey, 1 Yr. Estimates

# 17% face extreme housing cost burden

**% of households that are extreme cost-burdened**

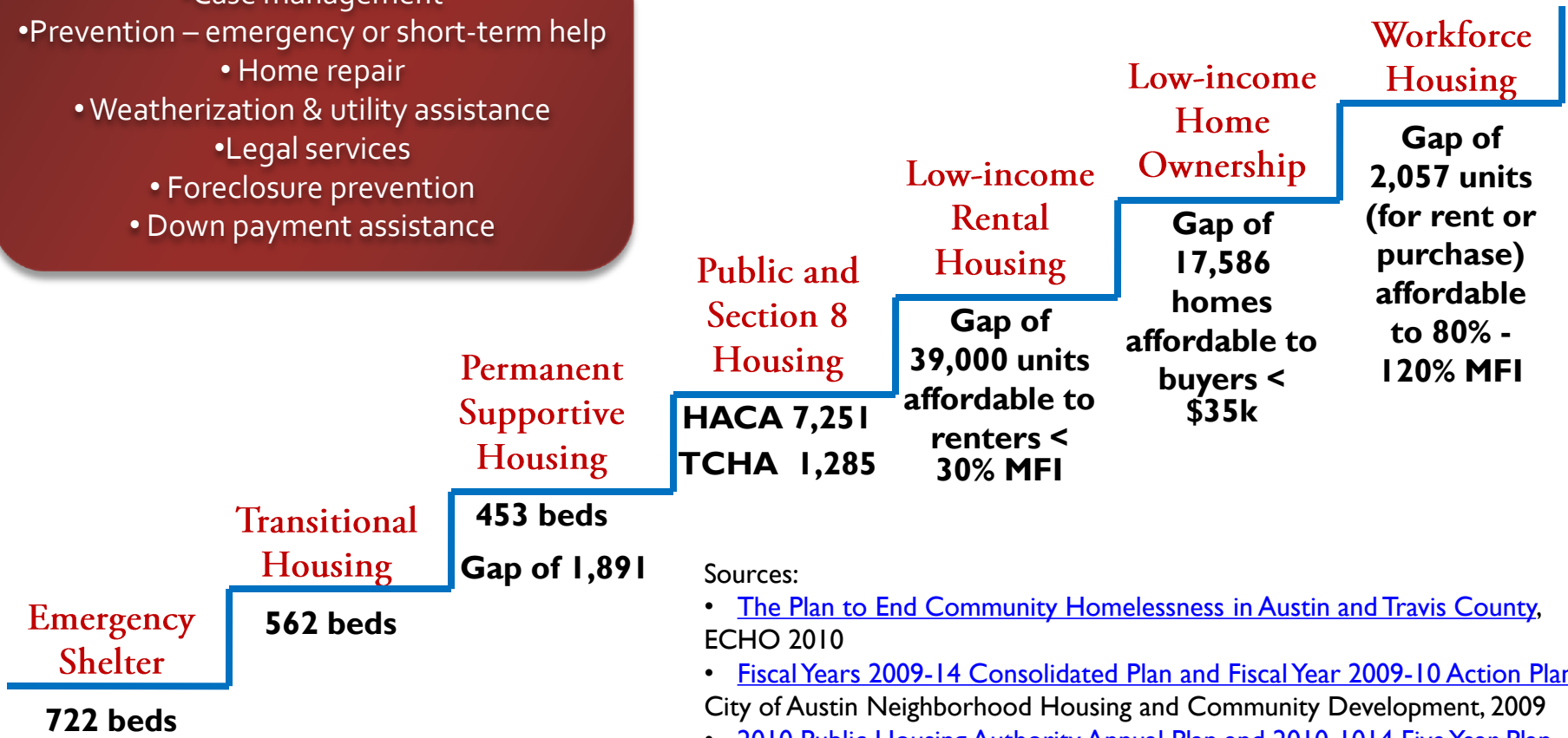


66,527 households in Travis County paid 50% or more of income on housing.

Source: American Community Survey, 1 Yr. Estimates

# The Housing Continuum

- Case management
- Prevention – emergency or short-term help
  - Home repair
- Weatherization & utility assistance
  - Legal services
- Foreclosure prevention
- Down payment assistance



Sources:

- [The Plan to End Community Homelessness in Austin and Travis County](#), ECHO 2010
- [Fiscal Years 2009-14 Consolidated Plan and Fiscal Year 2009-10 Action Plan](#), City of Austin Neighborhood Housing and Community Development, 2009
- [2010 Public Housing Authority Annual Plan and 2010-1014 Five Year Plan](#), Housing Authority of the City of Austin, 2009
- [Annual Action Plan for Program Year 2009](#), Travis County 2009
- [Travis County Housing Authority](#)