



Community Action Network

Promoting equity and opportunity

Community Action Network is...



a collaboration of agencies, organizations and individuals who work together to enhance the social, health, educational and economic well-being of Central Texas.

CAN vision

- ▶ Our richly diverse community will be healthy, safe, educated, just and compassionate where all people work together to achieve their full potential and celebrate their lives.



CAN mission



- ▶ To achieve sustainable social, health, educational and economic **outcomes** through engaging the community in a planning and implementation **process** that coordinates and optimizes public, private, and individual actions and **resources**.

CAN Partner Organizations

- Austin Chamber of Commerce
- Austin Community College
- Austin ISD
- Austin Travis County Integral Care
- Central Health
- Capital Metro
- City of Austin
- Community Justice Council
- Interfaith Action of Central Texas (iACT)
- One Voice Central Texas
- Seton Family of Hospitals
- St. David's Foundation
- St. Edward's University
- Travis County
- United Way Capital Area
- University of Texas at Austin
- Workforce Solutions – Capital Area

CAN Partners commit to...

- ▶ Appoint a member of their elected board or the executive director or their organization to serve on the CAN Board of Directors
- ▶ Support CAN financially
- ▶ Make a good faith effort to work in collaboration with other CAN Partners to improve the social, health, educational, and/or economic well-being of Central Texas

CAN Issue Area Groups

- Aging Services Council
- Austin/Travis County Victim Services Task Force
- Basic Needs Coalition
- Behavioral Health Planning Partnership
- Central Texas Afterschool Network
- Child & Youth Mental Health Planning Partnership
- Ending Community Homelessness Coalition
- Early Education & Care
- HousingWorks
- Intellectual & Developmental Disabilities Coalition
- Literacy Coalition of Central Texas
- Ready by 21 (Youth Development)
- Reentry Roundtable
- Regional Transit Coordination Committee

Policy, Community, and Service

Policy
makers

- **CAN Board of Directors** - elected officials and policy makers representing each CAN partner organization

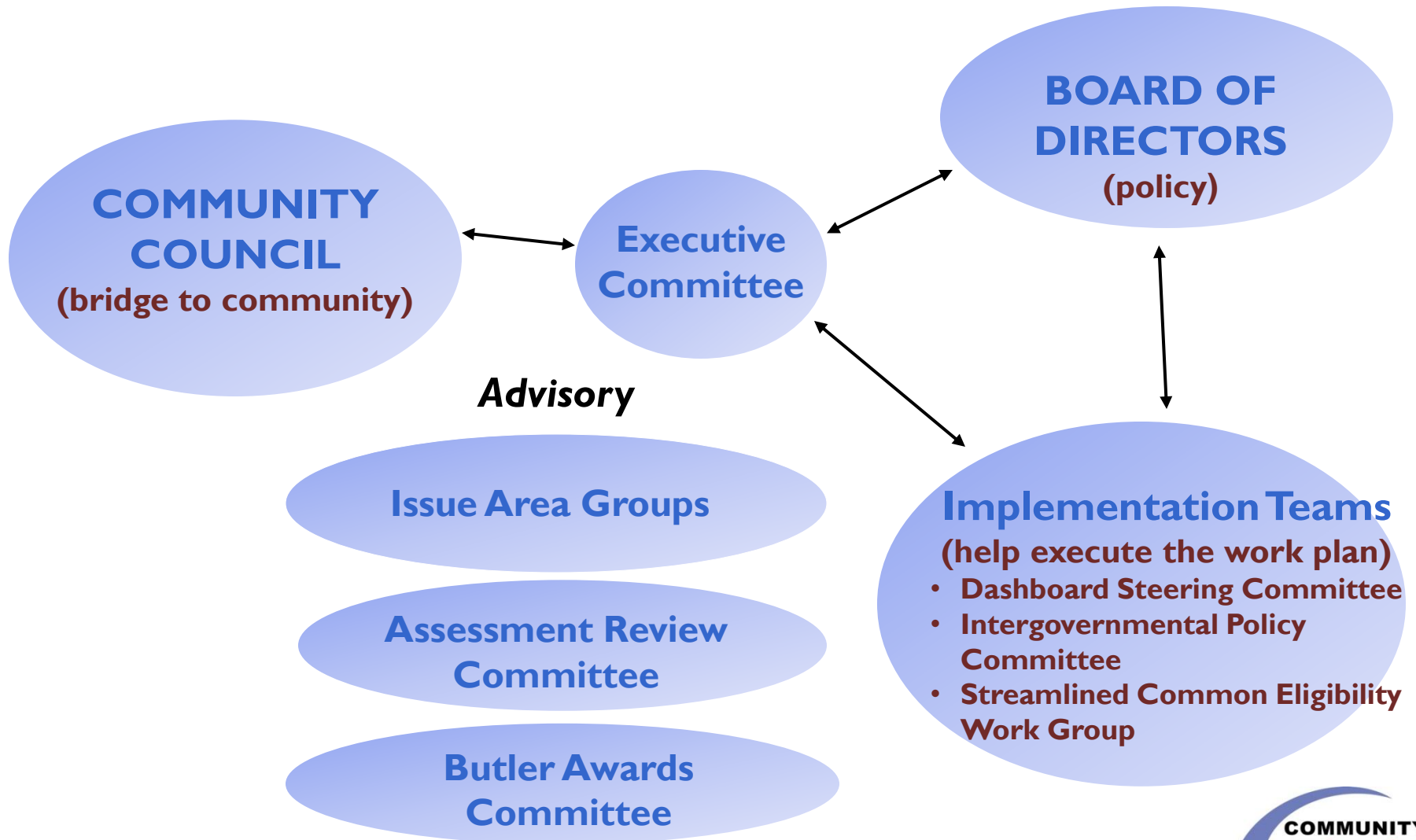
Community
members

- **CAN Community Council** – self-appointed board of community members with an annual application and election process

Service
providers

- **Issue Area Groups and Implementation Teams** - professionals who serve our community through agencies or non-profit organizations

Organizational Structure



Role of CAN Community Council

- ▶ **Community Council:** The Community Council provides a communication link between the community at large and the CAN Board of Directors. The duties of Community Council members are to:
 - ❑ Act as a liaison between the CAN Board of Directors and the community.
 - ❑ Raise community awareness about issues by providing a non-partisan forum for the exchange of information on community conditions and efforts to address needs.
 - ❑ Foster, encourage and enhance collaborative efforts whenever possible.
 - ❑ Consider the impacts of recommended collaborative strategies on vulnerable populations and across issue areas.
 - ❑ Report and make recommendations to the CAN Board of Directors.
 - ❑ Encourage community involvement in assessment, planning, and implementation processes.

CAN Bylaws approved 11/13/09

Annual Work Plan

The annual work plan for CAN focuses the collaboration's attention on specific efforts that require cross-jurisdictional attention and action.



2010 Work Plan Accomplishments

Community Dashboard

- ▶ Launched a [Community Dashboard](#) of key social indicators of our community's well-being.
- ▶ Community Council hosted televised forums on each indicator, inviting Issue Area Groups and other key stakeholders to share where we stand on the indicator and what must be done to move the indicator in the right direction.



Stable Families, Healthy Community

- ▶ [Streamlined Common Eligibility Work Group](#) developed a plan for connecting families and individuals to a range of community resources while ensuring that those who qualify are enrolled for public assistance.
- ▶ The CAN Board adopted the plan and work to implement it continues.



United Way Capital Area



Stable Families, Healthy Community

- ▶ [Community Resources 101](#) sessions were developed in partnership with United Way Capital Area to encourage people who need services to call 2-1-1.
- ▶ These trainings help front line workers and volunteers in service agencies, churches and other organizations understand how 2-1-1 works and how it can be used to connect people to the services they need.
- ▶ Training was developed and a calendar of sessions was scheduled and launched and continues in 2011.



Advocacy and Policy

- ▶ State legislative delegation met with CAN Board
- ▶ Intergovernmental Public Policy Committee made up of the government relations professionals from each CAN partner agency met to share priorities, strategies and ideas
- ▶ CAN developed a summary of legislative issues and priorities of CAN partner agencies and Issue Area Groups



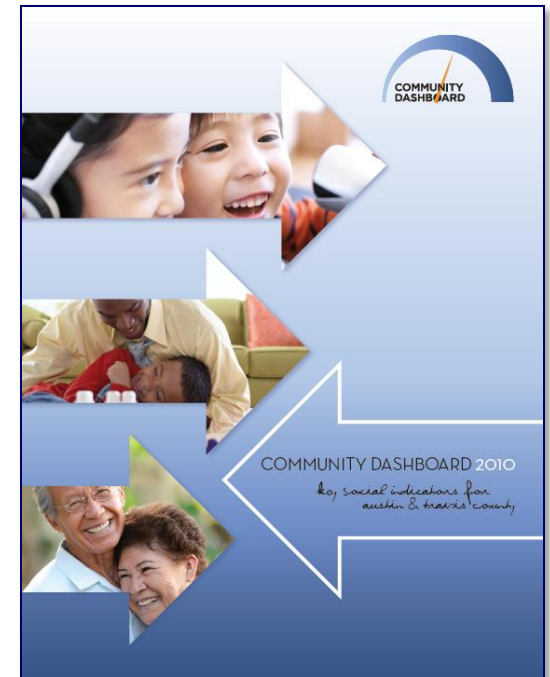
On-going CAN activities

- ▶ [CANews](#), an email newsletter of events, research and other health and human service news, was published twice a month
- ▶ twitter.com/CAN_Austin was launched to share more frequent updates, news, research and reports
- ▶ www.caction.org is updated regularly with
 - ▶ CAN partners' planning efforts
 - ▶ Latest research and reports
 - ▶ Agendas, minutes and presentations shared at Board and Community Council meetings
 - ▶ Community Events Calendar

2011 Work Plan

Community Dashboard

- ▶ Update the dashboard
- ▶ Begin to identify goals/targets for each indicator
- ▶ Use the Community Dashboard to increase community awareness of issues and conditions in our community



Collaborative Action

- ▶ Our study of the Community Dashboard indicators in 2010 has identified areas where CAN partners' collective attention and action is needed.
- ▶ In 2011, CAN partners will discuss how they can work together on two primary issues:
 - ▶ enhancing work opportunities for people who are low-income, and
 - ▶ facilitating housing planning across the continuum.

Demographics and Inequity

- ▶ As the CAN Community Council considers the Community Dashboard indicators, particular attention will be given to....
 - ▶ how demographic trends and shifts in our community will impact the indicators, and
 - ▶ the disproportionate impact on various populations and on people of different socio-economic levels.

Monitor local impact of state budget cuts

- ▶ CAN will convene the Intergovernmental Public Policy Committee to share information about the potential local impact of action taken during the 82nd Legislative Session.



Connect Families to Resources

- ▶ Continue implementation of *Stable Families, Healthy Community 5-Year Plan* to connect individuals and families to a range of community resources while maximizing enrollment in public assistance programs.
- ▶ CAN will continue to learn from and build on the foundational work of the United Way, Central Health and other partners of the Integrated Care Collaboration to streamline screening, eligibility determination and data sharing across the safety net.



Contact us

Community Action Network office

www.caction.org (512)414-0323

Vanessa Sarria, Executive Director

vsarria@austinisd.org (512)414-0325

Mary Dodd, Assistant Director

mary.dodd@austinisd.org (512)414-0326

Chantel Bottoms, Program Associate

chantel.bottoms@austinisd.org (512)414-0327

Karen Cook, Web Designer

kcook@caction.org