

# Poverty Awareness Month

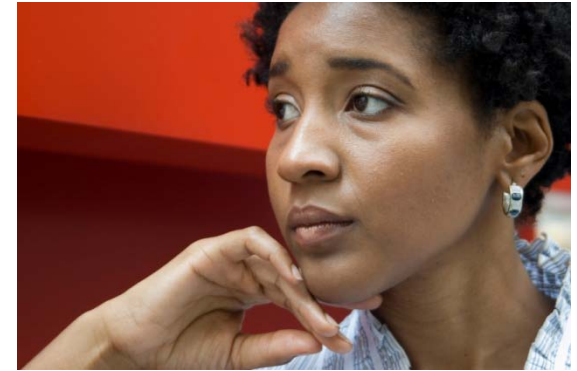
- **Where do we stand?**
  - Chantel Bottoms, CAN Staff
  - Ellen Balthazar, (Any Baby Can)
    - Basic Needs Coalition Advocacy Committee
- **What is being done?**
  - Katie Navine, (Goodwill Industries)
    - Chair of the Basic Needs Coalition
- **What more needs to be done?**
  - Frances Deviney,
    - Senior Research Associate, Center for Public Policy Priorities
  - Celia Hagert
    - Senior Policy Analyst, Center for Public Policy Priorities

# Poverty Fact Sheet & Basic Needs FAQ

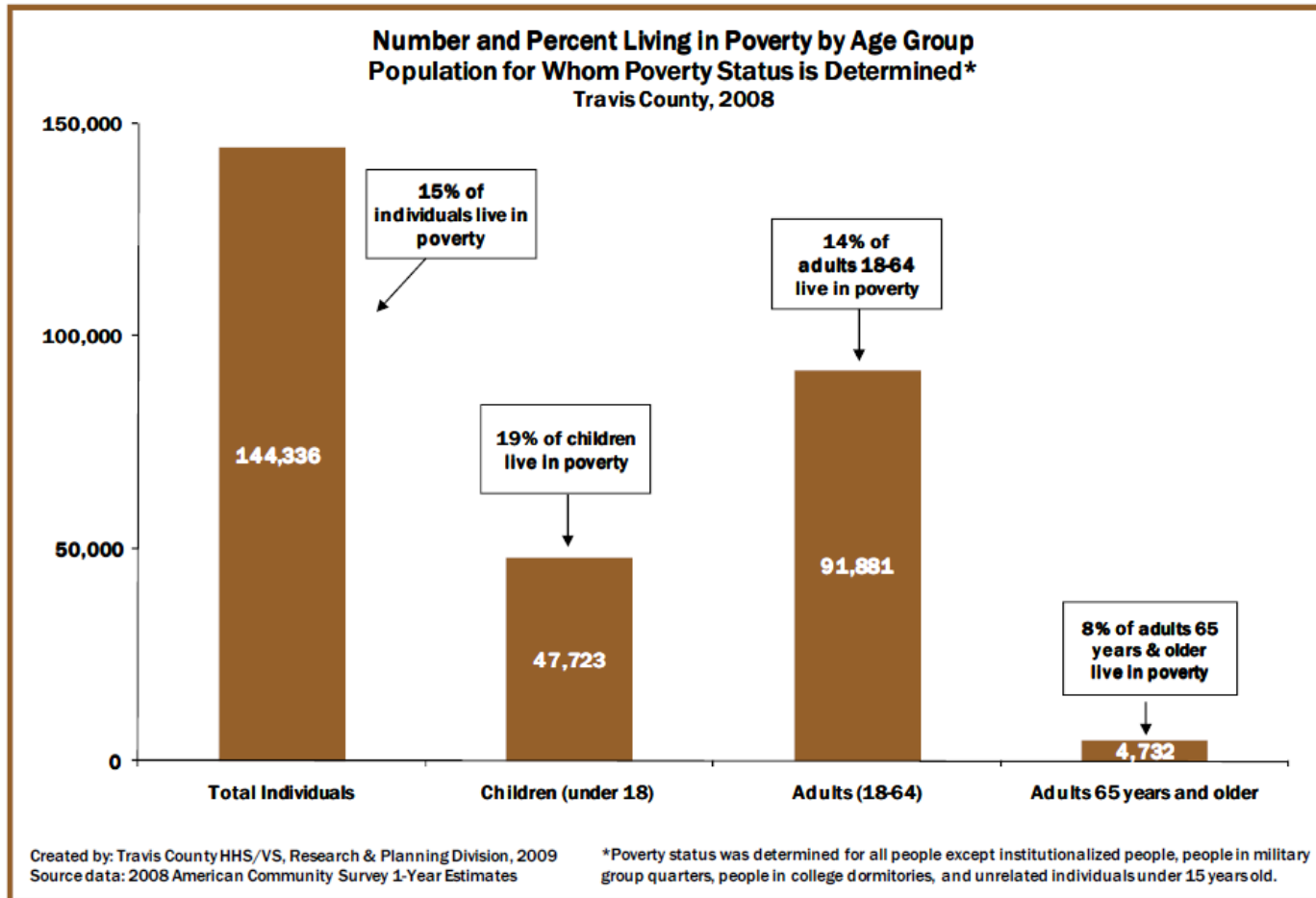
Presentation to the Community Council  
January 11, 2010

# Poverty in Travis County

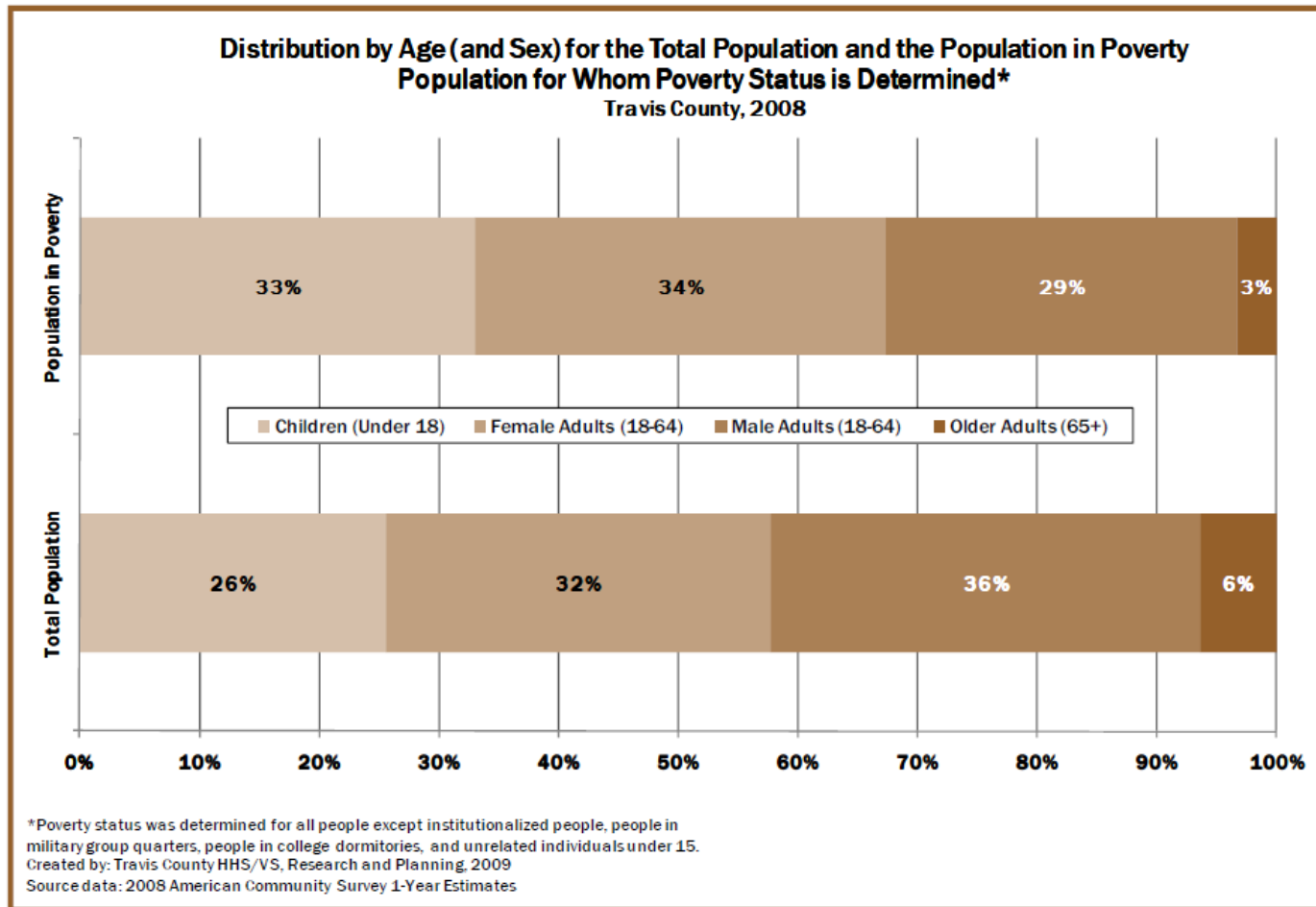
- 1 in 7 Travis County residents is living in poverty
  - That's 144,336 people or...
  - ...15% of the population.



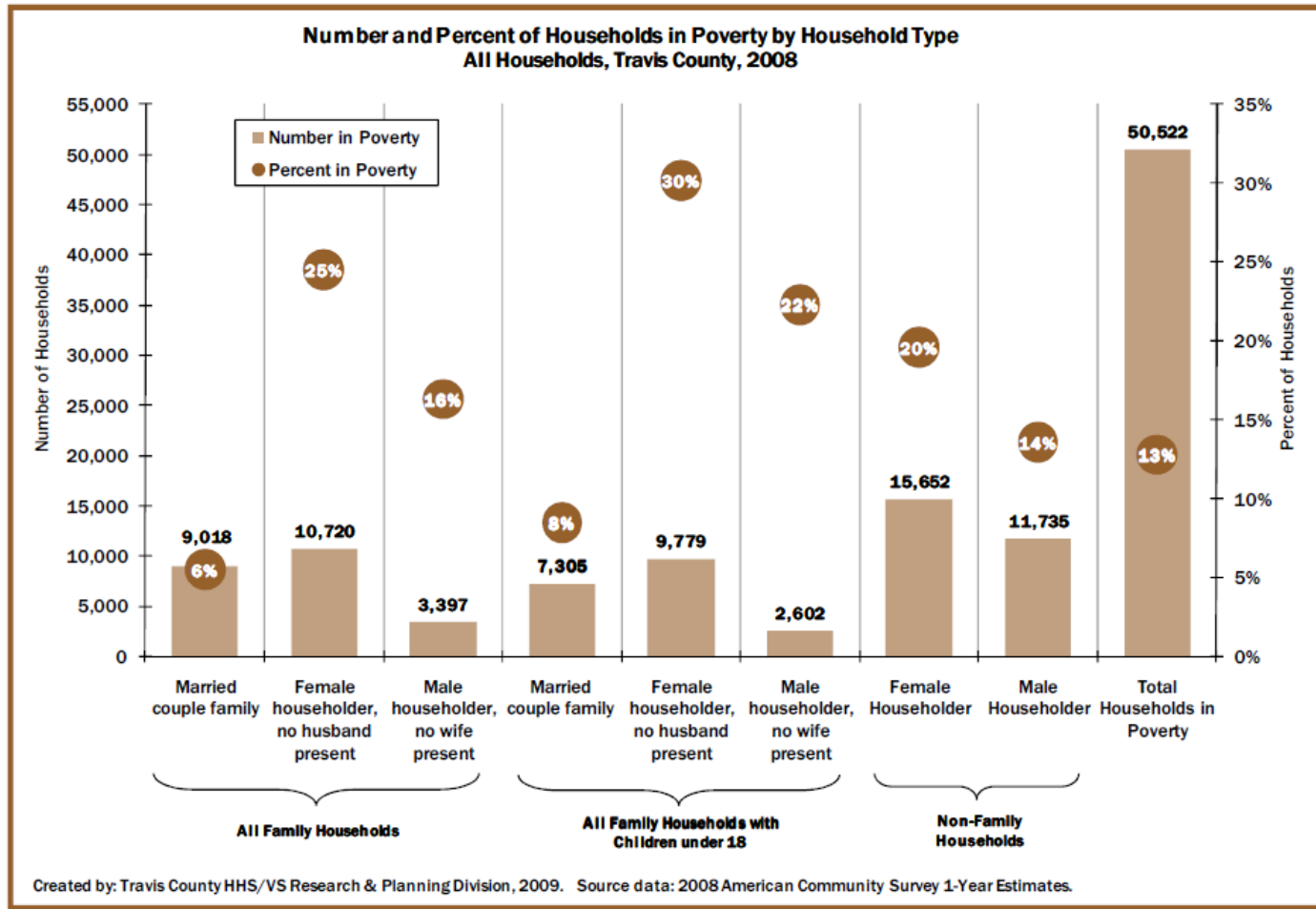
# Poverty in Travis County



# Poverty in Travis County



# Poverty in Travis County



# Poverty in Travis County

- Most families in poverty do not receive government assistance.
  - 84% do not receive any type of cash assistance
  - 72% do not receive food stamps



# Poverty in Travis County

## Households Receiving Public Benefits, Travis County, 2008

	Travis County		Texas		U.S.	
	Number of Households	Percent of all Households	Number of Households	Percent of all Households	Number of Households	Percent of all Households
Households with Supplemental Security Income (SSI)	7,466	<b>1.9%</b>	271,930	<b>3.2%</b>	3,935,960	<b>3.5%</b>
Households with Public Assistance Income	3,780	<b>1.0%</b>	131,474	<b>1.6%</b>	2,638,470	<b>2.3%</b>
Household that received Food Stamps in the past 12 months	26,027	<b>6.6%</b>	797,298	<b>9.5%</b>	9,769,112	<b>8.6%</b>

Created by: Travis County HHS/VS, Research & Planning Division, 2009.

Source data: 2008 American Community Survey 1-Year Estimates

# A Focus on Childhood Poverty

- Nearly 1 in 5 children and youth in Travis County are living in poverty
  - That's 47,723 persons under the age of 18...
  - ...or 19% of the child and youth population.



# A Focus on Childhood Poverty

- Texas has the fastest growing child population in the country and the Central Texas child population is growing at twice the state rate.
- The low income student population is growing at twice the rate of the overall Central Texas student population.

# A Focus on Childhood Poverty

1 in 3 children raised in poverty remain in poverty as adults.



# A Focus on Childhood Poverty

- Boys raised in poverty are twice as likely to be arrested and three times as likely to be incarcerated.
- Girls raised in poverty are five times as likely to bear a child out of wedlock prior to the age of twenty-one.

# A Focus on Childhood Poverty

In Texas childhood poverty costs \$57.5 billion dollars annually.

# A Focus on Childhood Poverty

- Key issues that affect children in poverty
  - Food
    - Children in poor households are more likely to experience food insecurity.
    - Programs such as WIC and SNAP help families move to food self-sufficiency

# A Focus on Childhood Poverty

- Key issues that affect children in poverty
  - Housing
    - Housing costs in Austin have risen by 85% in the past 10 years
    - 1 in 6 renters earning less than \$20,000 can find affordable housing
    - Housing instability affects children's success in school

# A Focus on Childhood Poverty

- Key issues that affect children in poverty
  - Education
    - Poor children are more likely to be raised by parents who have completed fewer years of education
    - More likely to grow up in households that are less cognitively stimulating

# A Focus on Childhood Poverty

- Key issues that affect children in poverty
  - Transportation
    - Lower cost housing is located far from workplaces dramatically increasing transportation costs and commute times.

# A Focus on Childhood Poverty

- Key issues that affect children in poverty
  - Healthcare
    - 18% of children and youth in Travis County are uninsured



# A Focus on Childhood Poverty

- Key issues that affect children in poverty
  - Childcare
    - 40% of single working mothers with children spent at least half of their income on child care expenses
    - Between 2005 and 2006 the average cost of full-time care for children from birth to three years old rose by nearly \$300, to \$636 a month in Travis County.

# A Focus on Childhood Poverty

- Key issues that affect children in poverty
  - Living Wages
    - In 2007, approximately 2.4 million Texas children lived in working poor families where their caretakers often worked for low wages.
    - The Austin-Round Rock (MSA) is the third-most expensive area in Texas.

# How can I make a difference?

- Learn more about poverty.
- Donate your time and money.
- Support public policy initiatives.

# Basic Needs Coalition of Central Texas

## Presentation to the Community Council January 11, 2010

Katie Navine

Vice President of Workforce Development Services

Goodwill Industries of Central Texas/

2009-2010 Chair of the BNC

[www.basicneedscoalition.org](http://www.basicneedscoalition.org)

# BNC Member Agencies

## Basic Needs Coalition Member Agencies:

2-1-1 Texas • A [New Entry] Inc • AIDS Services of Austin • Any Baby Can • Arc of the Capital Area • Austin Stand Down • Austin Tenants Council • Austin/Travis County Health and Human Services Department • Austin Travis County Integral Care • Austin/Travis County Reentry Roundtable • Blackland Community Center • Capital Area Food Bank • Caritas of Austin • Catholic Charities of Central Texas • Communities in Schools • Community Action Network • El Buen Samaritano • Episcopal Church of the Good Shepherd • Family Connections • Family Eldercare • Foundation Communities • Foundation for the Homeless • Front Steps • Gateway Church • Goodwill Industries of Central Texas • Housing Authority of the City of Austin • Mary House Catholic Worker of Austin, Inc • Marywood Children and Family Services • Meals on Wheels and More • Micah 6 • Physicians Health Choice of Central Texas • Project Hope Manor ISD • SafePlace • Saheli for Asian Families • Salvation Army • St. Louis Parish Social Ministries • Sustainable Food Center • Texas Interagency Interfaith Disaster Response • Texas Rio Grande Legal Aid • Texas Service Dogs • The Care Communities • The Wright House Wellness Center • Travis County Health & Human Services & Veterans Services Department • Trinity Center • United Way Capital Area • Volunteer Legal Services of Central Texas • Workforce Solutions •

# BNC Mission and Vision

## Mission

- The Mission of the Basic Needs Coalition of Central Texas is to lead the community in creating solutions that secure the basic resources – food and housing- of our neighbors in need.

## Vision

- The Vision of the Basic Needs Coalition of Central Texas is to eliminate the effects of poverty and promote self sufficiency.

# Purpose of the BNC

## Purpose of the BNC is to:

1. Assist, advise, and educate community policymakers, service providers, funders, community groups and citizens in addressing basic needs in Austin and Travis County,
2. Maximize services and resources through the development, coordination and implementation of effective strategies for service delivery; and
3. Serve as an advisory body of the Community Action Network (CAN).

# Basic Needs Coalition of Central Texas

- **Safety Net**

- to catch people who are threatened by homelessness, hunger and violence

- **Ladder Up**

- to help people move toward self sufficiency

# Additional Roles of the BNC

- Dissemination of Information and Data
- Resource of Subject Matter Experts
- Networking Opportunity
- Incubator for New Ideas for Service Provision
- Advocacy on Behalf of People who are Living in Poverty

# Sub Committees of the BNC

- Housing Stability Committee – Co-chairs: Andrea Colunga Bussey- Division Director -Travis County Health & Human Services & Veterans Service Family Support Services & Mario Cortez – Program Coordinator, Childrens HOME Initiative, Foundation Communities
- Food Security Committee – Co-chairs: Tanya Greenough – Caritas of Austin & Sue Campion – AIDS Services of Austin
- Advocacy Committee – Chair: Karen Markham – Gateway Church
- Membership Committee – Chair: Leah Graham – Executive Director - The Wright House Wellness Center
- Best Single Source – Chair: Susan Eason – Executive Director – The Arc of the Capital Area



# Basic Needs Coalition of Central Texas

- **Collaborative Efforts**
  - BSS-Best Single Source – Initiated in 2005. Provides housing assistance (rent, utility and mortgage) to households in a financial crisis who are in danger of becoming homeless.
  - BSS Partner Agencies include: AIDS Services of Austin, Caritas, Family Eldercare, SafePlace, The Arc of the Capital Area, Travis County Emergency Assistance Centers, Goodwill, Catholic Charities of Central Texas, Meals on Wheels and More, Any Baby Can and The Wright House Wellness Center.

# Basic Needs Coalition of Central Texas

- Collaborative Efforts-con't
  - Long Term Hurricane Relief - Systematically addressed needs of people affected by Hurricane Katrina and Rita. Provided comprehensive case management.
  - Attracted many funders including: City of Austin, Foundations and United Way.

# Basic Needs Coalition of Central Texas

- **Collaborative Efforts – con't**
  - Rapid Re-Housing-The Rapid Re-housing Collaborative is a pilot project that aims to place homeless/near homeless families & individuals into safe permanent housing while reducing their time in shelters, temporary housing and overcrowded living situations.
  - Partner Agencies include: AIDS Services of Austin, Any Baby Can, Caritas, Catholic Charities, Foundation for the Homeless, Goodwill, Lifeworks, Safeplace and Salvation Army.

# Basic Needs Coalition of Central Texas

- Collaborative Efforts – con't
  - HPRP – Homelessness Prevention & Rapid Re-Housing Program- Provides services and financial assistance to either prevent families and individuals from becoming homeless or help those who are experiencing homelessness to be quickly re-housed and stabilized.
  - HPRP Member Agencies include: Caritas, Goodwill, Front Steps, SafePlace, Any Baby Can, Foundation for the Homeless.

# Basic Needs Coalition

Thank you to:

- All the Agencies that give their time and talent to secure basic needs resources to our community
- Funders who provide monetary resources and expertise
- CAN for providing research on the issues of poverty