



Austin/Travis County Health and Human Services Department



The role of public health is to:

PROMOTE community-wide wellness,

PREVENT disease, and

PROTECT the community from infectious diseases,
environmental hazards, and epidemics

Equity in Opportunity on Health with Focus on Prevention and Public Health

Community Action Network – Community Council

November 19, 2007

David Lurie, Director

Ava Woods, Austin Independent School District

Joe Collins, Black Faith Health Initiative

Adolfo Valadez, M.D., M.P.H., Medical Director

Shannon Jones,, Assistant Director of Public Health

Austin/Travis County

Health and Human Services Department

Mission

The mission of the Austin/Travis County Health and Human Services Department (HHS) is to work in partnership with the community to promote health, safety, and well-being

Vision

Our community will be the healthiest in the Nation

The Role of Public Health is to:

- Promote community-wide wellness,**
- Prevent disease,**
- Protect the community from infectious diseases, environmental hazards, and epidemics**

Public Health

“Public Health was and is where the largest numbers of lives are saved, usually by understanding the epidemiology of a disease-its patterns, where and how it emerges and spreads-and attacking it at its weaker points. This usually means prevention. Science had first contained smallpox, then cholera, then typhoid, then plague, then yellow fever, all through large scale public health measures, everything from filtering water to testing and killing rats, to vaccination. Public health measures lack the drama of pulling someone back from the edge of death, but they save lives by the millions. –”

The Great Influenza, p. 87, 2004.

John M. Barry

Austin Equity Commission

The Austin Equity Commission (AEC) was created by City Council and appointed by Mayor Kirk Watson in May 2000. The Commission's Mandate was to,

“build consensus around a strategic vision for long-range economic prosperity and social equity for all.”

<u>Name</u>	<u>Employment/Employer</u>	<u>Representing</u>
Sam Biscoe	County Judge/Travis County	At-Large
Rachel Davila	Owner/Nuevo Leon Restaurant	At-Large
Leo Dunn	V.P. Corporate Services/3M	Chamber
Paul Ellis	President/Austin Bus. Coll	Wkforce Dev. Bd./CAN
Dr. Penny Green	Adjunct Professor/St. Ed's Univ.	At-Large
Pat Hayes	Seton Healthcare Network	At-Large
Tom Kenney	Outback Steakhouse	Chamber
Jennifer Kim	Policy Analyst/Economic Dev. Admin.	At-Large
Chris King	Director/ Ray Marshall Center	AFL-CIO
Louis Malfaro	Co-President/Education Austin	AFL-CIO
Ray Marshall	Ray Marshall Center/LBJ School	At-Large
Darryl Pierce	Dir./Capital City Chamber	At-Large
Mike Murphy	Asst. Bus. Mgr./IBEW Local Union 520	AFL-CIO
Jewel Parker	The Meeting Place	Chamber
Sal Valdez	Director, HUBs/Gen. Services Comm.	Chamber

Austin Equity Commission

The process lasted from the appointment of 15 citizens in May 2000 until submission of a Final Report to City Council on August 23, 2001. It included presentations from many community stakeholders such as;

- **Austin Independent School District - Dr. Pat Forgione**
- **Austin Community College - Dr. Richard Fonte**
- **Capital Training Foundation - John Fitzpatrick**
- **American Youth Works - Richard Halpin**
- **Capital Area Workforce Development Board - Sandy Dochen**
- **Capital IDEA - Steve Jackobs**
- **Judge Sam Biscoe**
- **Austin Child Care Council - Rhonda Paver**
- **SETON - Dr. Pat Hayes**
- **LBJ School - Dr. James Galbraith**
- **A/TCMHMR - David Evans**

Austin Equity Commission - Recommendations

The AEC developed 26 recommendations covering seven different areas including, Wages, Education, Workforce Development, Affordable Housing, Early Education and Care, Community Health Care, and Transportation. The Community Health Care recommendations were as follows;

- **Establish a Community Wellness and Prevention Consortium, a partnership of public health agencies, schools, businesses, community-based organizations, neighborhood associations, and faith-based organizations to take charge of 1) advocating for wellness and prevention activities and 2) coordinating wellness and prevention assessments in targeted neighborhoods.**
- **Adopt the Neighborhood-Based Education and Screening Model, which targets preventive health services in neighborhoods experiencing health disparities.**
- **Improve residents' access to health care.**
- **Formulate policy initiatives to deliver mental health services more effectively through an improved system characterized by prevention, rehabilitation, and responsiveness.**

Adopt Neighborhood-Based Education and Screening Model

- ❑ The Community Preventive Health Model was initiated at the Rosewood Zaragosa Neighborhood Center in February of 2002. Implementation at Montopolis, St. John's Blackland, East Austin, and South Austin Neighborhood Centers took place in 2003 & 2004**
- ❑ A Healthy Communities Mobile service has been instituted for rural communities. The Healthy Communities Mobile van makes regularly scheduled visits to Manor, Pflugerville and Del Valle providing similar prevention health model services**
- ❑ Black Church Outreach Project enables churches and faith-based organizations in the Central Texas area to become leaders in HIV prevention by providing comprehensive educational programs, offering support, and encouraging those infected to seek and maintain treatment.**
- ❑ Black Faith Health (BFHI) strives to increase awareness and build capacity within the African American community to address issues surrounding HIV/AIDS and other health disparities**
- ❑ As of December 2006, all of the nine AAQOL health initiatives had been planned or completed. The community clinic in far north was opened in December 2005. By end of 2006, the clinic had served over 1,600 new clients of which 21% (345) were African Americans. The weekly "Health Talk" radio show and the "Powered By Me" campaign targeting minority youth were well received. With support from STEPS the Community Preventive Health Model has been successful in creating awareness of obesity, asthma and diabetes. Also, the Prevention Mobile Outreach Team carried screening and educational services to targeted areas. 4,114 units of services were provided, including 1,492 health screenings in 2006.**

Black Faith-based Health Initiative

Mission, Vision and Values

The background features a collage of three images: an open book with purple pages on the left, a clock with a purple face on the top right, and an open book with green pages on the bottom left. The text is overlaid on this collage.

“Where there is no
vision, the people perish”

- **Proverbs 29:18**

Mission



The Black Faith-based Health Initiative (BFHI) strives to increase awareness and build capacity within the African American community to address issues surrounding HIV/AIDS and other serious health disparities.

Mission



Are culturally-specific solutions really necessary in the fight against HIV/AIDS and other health disparities?



Mission

“... race and ethnicity, by themselves, are not risk factors for HIV infection.

However, because of a complex set of historical, structural, environmental, and cultural factors

- including racism and discrimination, poverty, denial, stigma, homophobia, and limited access to health care -

African Americans are more vulnerable to HIV infection.”

- Centers for Disease Control and Prevention, HHS

Mission

Emphasis on Increased Awareness

- Executive briefings to pastors



Mission

Emphasis on Increased Awareness

- Presentations to church congregations



Mission

Emphasis on Increased Awareness

- Placement of Health Education Centers in churches and community organizations



Mission

Emphasis on Increased Awareness

- Participation in Community Health Fairs and other heavily attended public events





Vision

An Emphasis on Capacity Building

- Stay true to the mission of awareness
- Develop and distribute a wide range of information resources
- Develop a community health advocate training program
- Replicate and develop capacity in other communities and organizations



Black Faith-based Health Initiative

HOME SERVICES FREQUENTLY ASKED QUESTIONS ABOUT US PARTNERS CONTACT

The Black Faith-based Health Initiative (BFHI) strives to increase awareness and build capacity within the African American community to address issues surrounding HIV/AIDS and other serious health disparities.

"Where there is no vision, the people perish."
- Proverbs 29:18

Live Presentations in Churches & Community Organizations

[Need someone to talk to?](#)

[Interested in a referral to a local health agency for testing, counseling or other health services?](#)
- Click here -

Black Faith-based Health Initiative (BFHI)

- Integrity
- Competence
- Hard Work
- Compassion

Establish a Community Wellness and Prevention Consortium

STEPS Consortium

Agape Family of Churches	El Buen Samaritano
American Cancer Society	Greater Austin Chamber of Commerce
American Diabetes Association	Health Ministry Team Churches
American Heart Association	Healthy Childcare Austin (Family Connections)
American Lung Association	Hispanic Chamber of Commerce
Austin Asthma Coalition	Huston Tillotson College
Austin Community Care Services Department	Kansas University Work Group
Austin Health Connection	KLRU Television
Austin Housing Authority	Mayor's Fitness Council
Austin Independent School District	People's Community Clinic
Austin Inter-Faith Alliance	RunTex
Austin Parks and Recreation Department	Seton Healthcare Network
Austin Travis County Mental Health and Mental Retardation	Sustainable Food Center–Austin Community Gardens
Capital Area African American Chamber of Commerce	Texas Cooperative Extension Service
Capital Metro	Trans Texas Alliance
Chronic Disease Prevention Program	Trust For A Smokefree Texas
Del Valle Independent School District	University of Texas School of Nursing
Department of State Health Services	YMCA
	Austin/TC Health and Human Services Department

Austin Independent School District

The AISD and Steps to a Healthier Austin partnership began in 2003 to impact:

- Obesity**
- Asthma**
- Diabetes**
- Tobacco Use**
- Staff Wellness**
- After-school programs**

Austin Independent School District

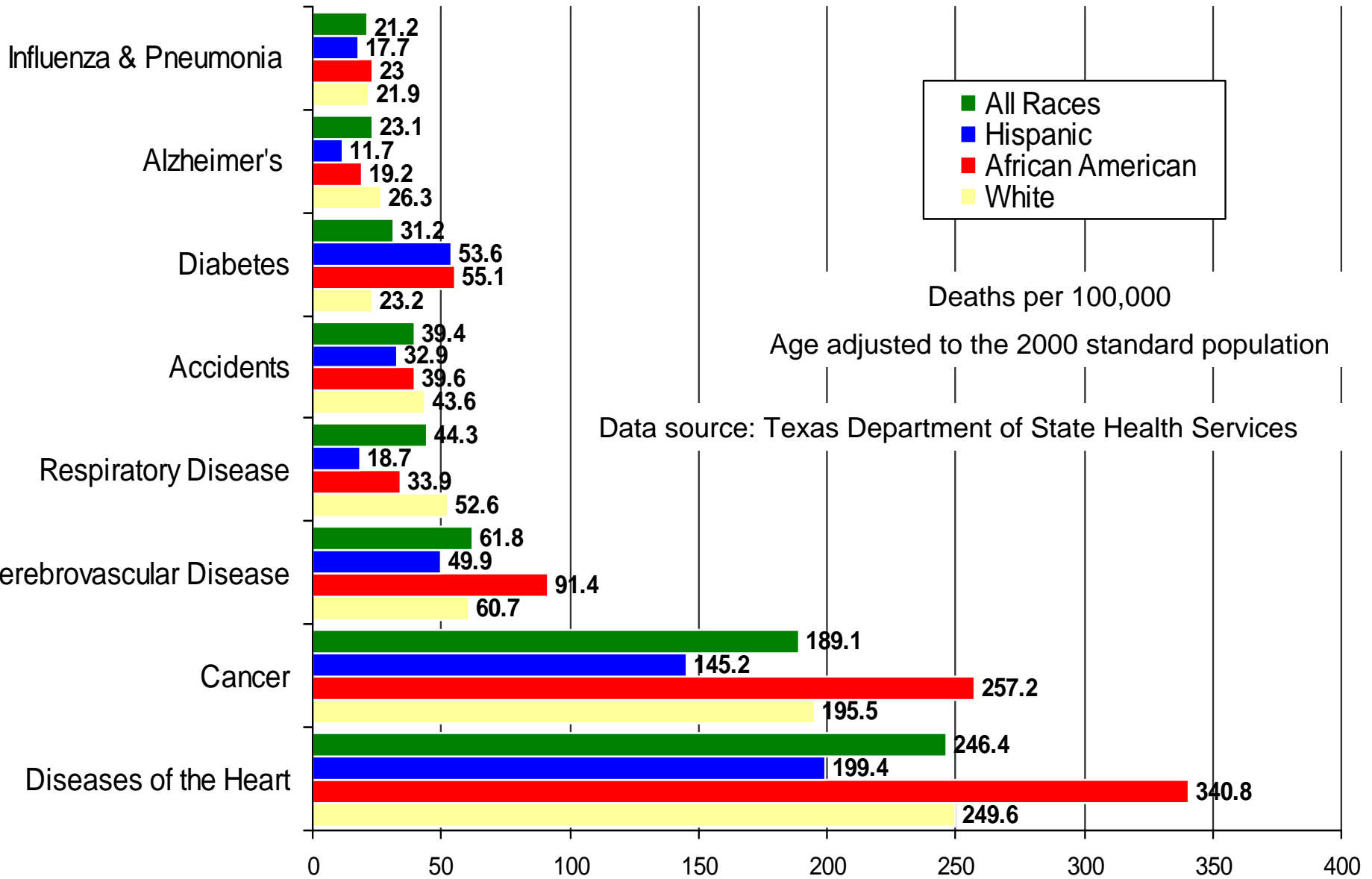
The partnership has impacted the students in AISD through:

- Increased access to a medical provider for case management of asthma, diabetes, and obesity**
- Provided a nutrition and physical after-school program through YouthInteractive to students in Elementary, Middle, and High School**
- Provided staff wellness opportunities**
- Provided elementary schools with the tools to implement a coordinated school health program; including, health education, physical education, nutrition, and parent/community involvement.**

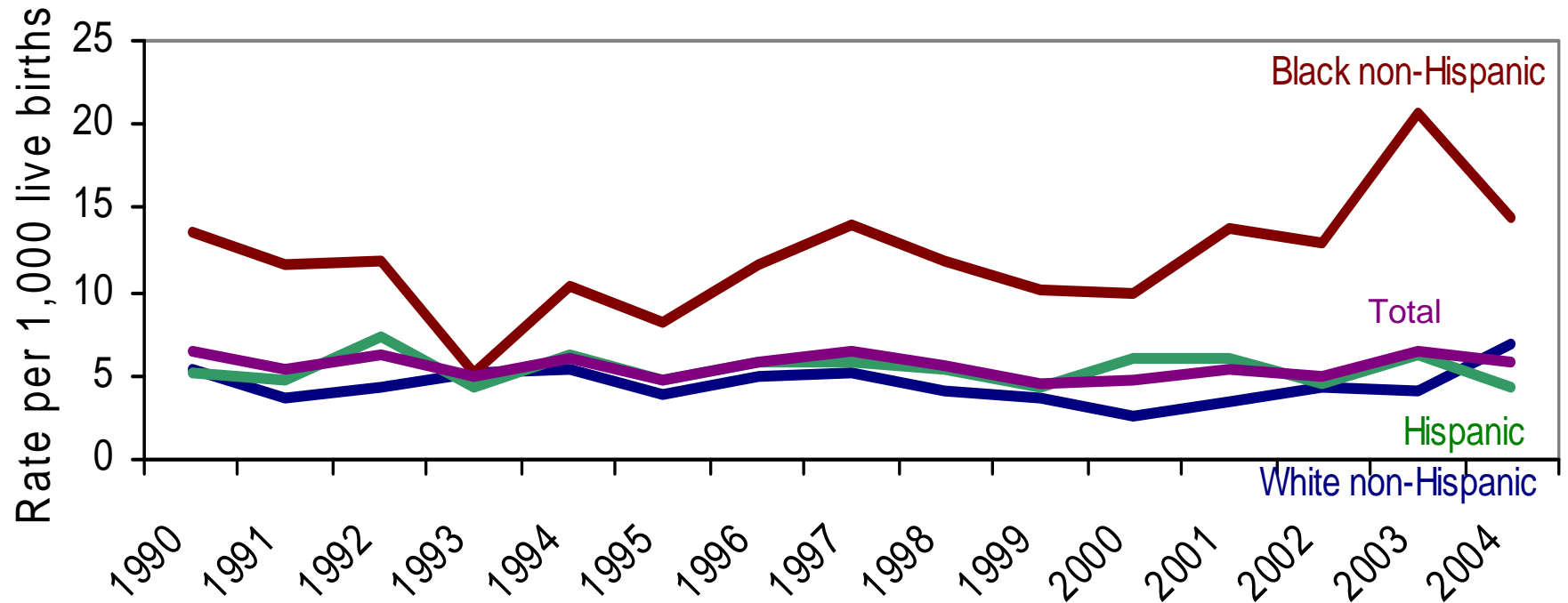


Austin/Travis County Health and Human Services Department

Leading Causes of Death in Travis County by Race/Ethnicity, 2000-2004

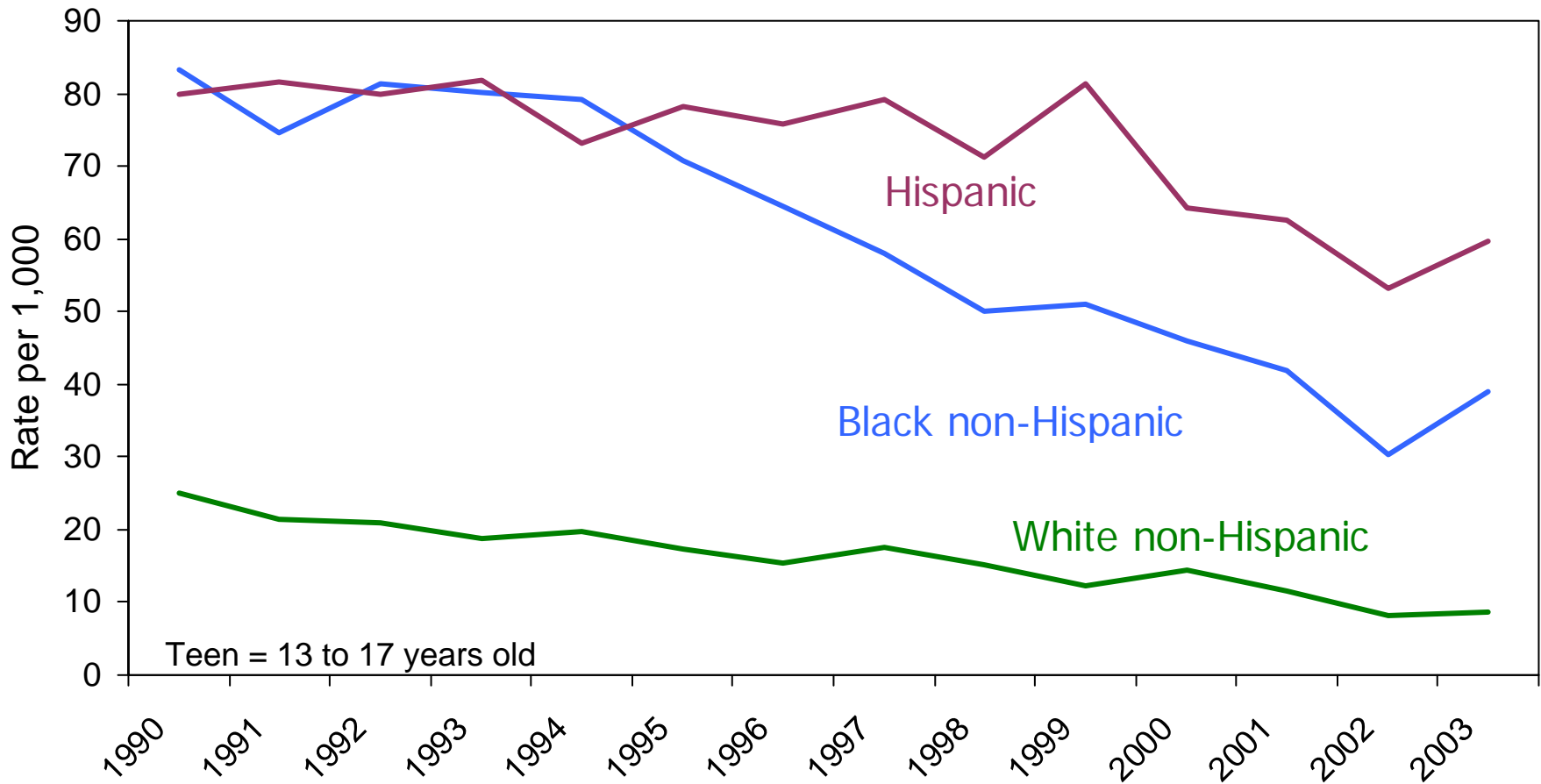


Infant Mortality Rates by Race/Ethnicity, Travis County 1990-2004



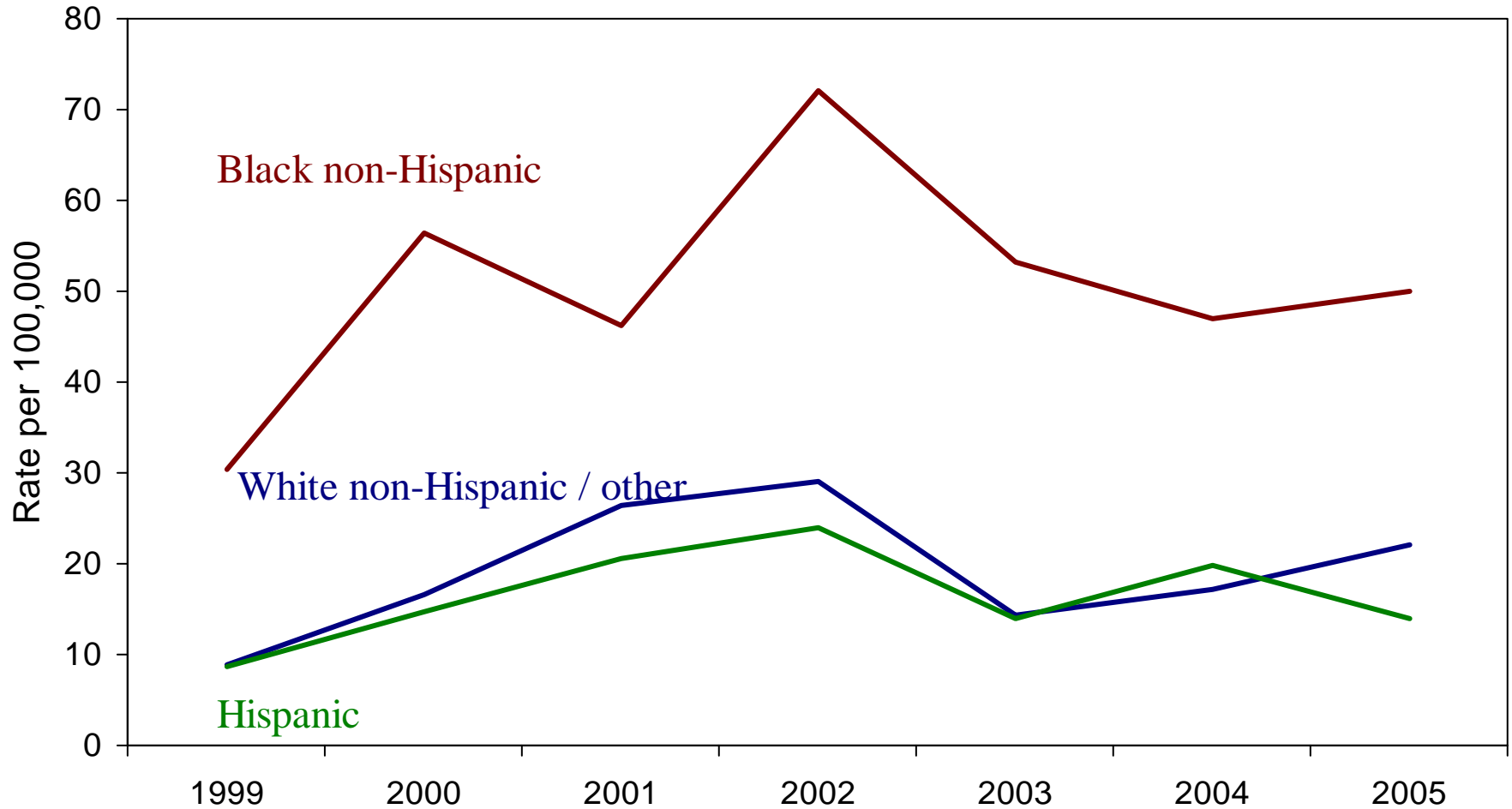
Data source: Texas Department of State Health Services Vital Statistics

Teen Pregnancy Rate by Race/Ethnicity, Travis County, 1990-2003



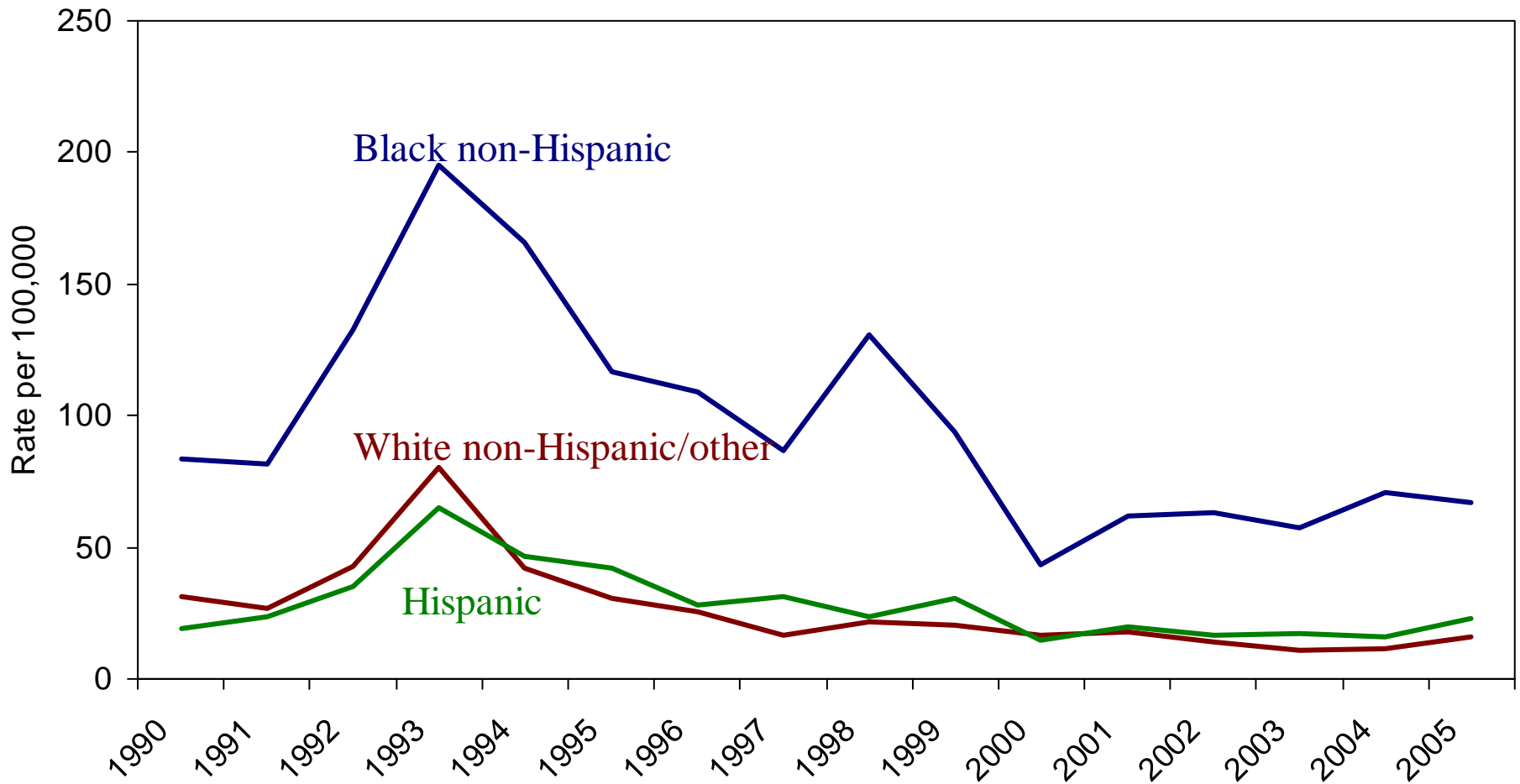
Data source: Texas Department of State Health Services

HIV Rates by Race/Ethnicity



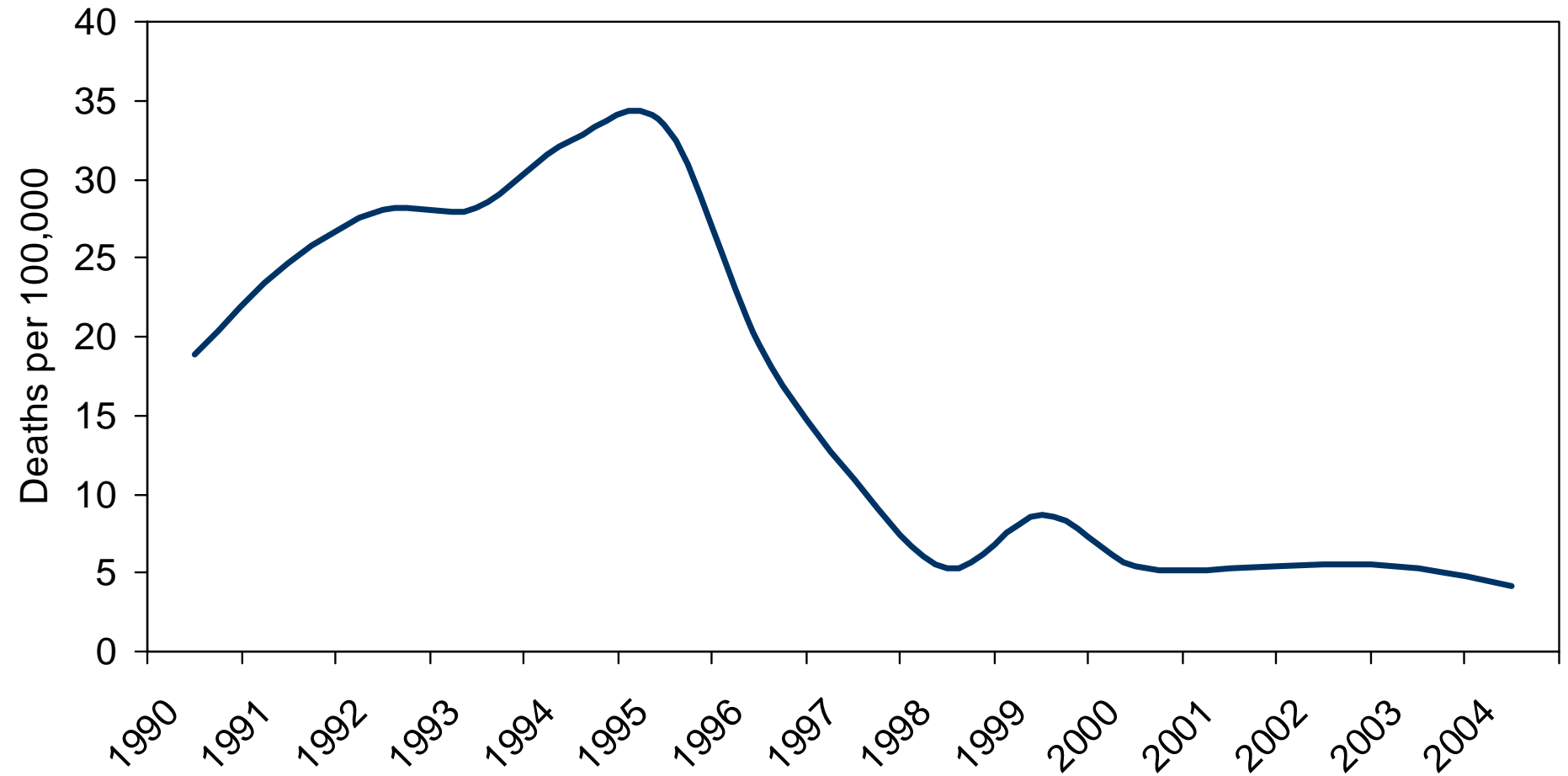
Data source: Austin/Travis County HIV Surveillance Report 2005

Rate of new AIDS cases by Race/Ethnicity, Travis County



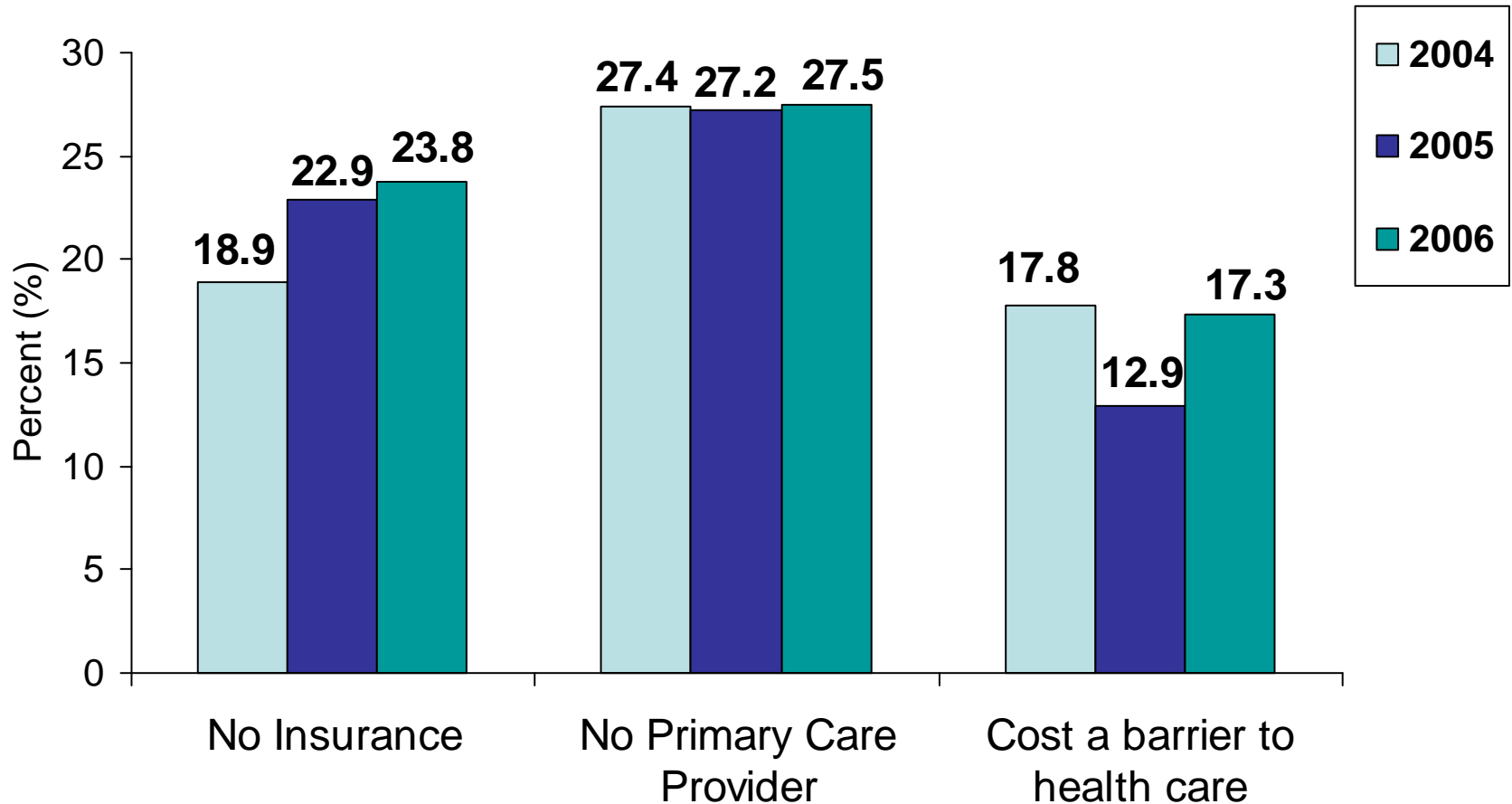
Data source: Austin/Travis County HIV Surveillance Report 2005

Age-adjusted HIV/AIDS Mortality Rates, Travis County



Data source: Austin/Travis County HIV Surveillance Report 2005

Access to Health Care 2004-2006 — Travis Co., TX



Data Source: 2004-2006 AustinMSA BRFSS

Input, Observations, Questions?

RESOURCES

The Black Faith-based Health Initiative (BFHI)

<http://bfhi.net/>

The Austin Equity Commission – Final Report

http://www.caction.org/reports/AEC_Final_Report_8.23.01.pdf

Prescription for Wellness -2001

<http://www.caction.org/health/PrescriptionForWellness/TOC.htm>

Austin/Travis County Health and Human Services Department

<http://www.ci.austin.tx.us/health/>

STEPS – I thrive

<http://www.ithriveaustin.org/>

David Lurie

972-5010