



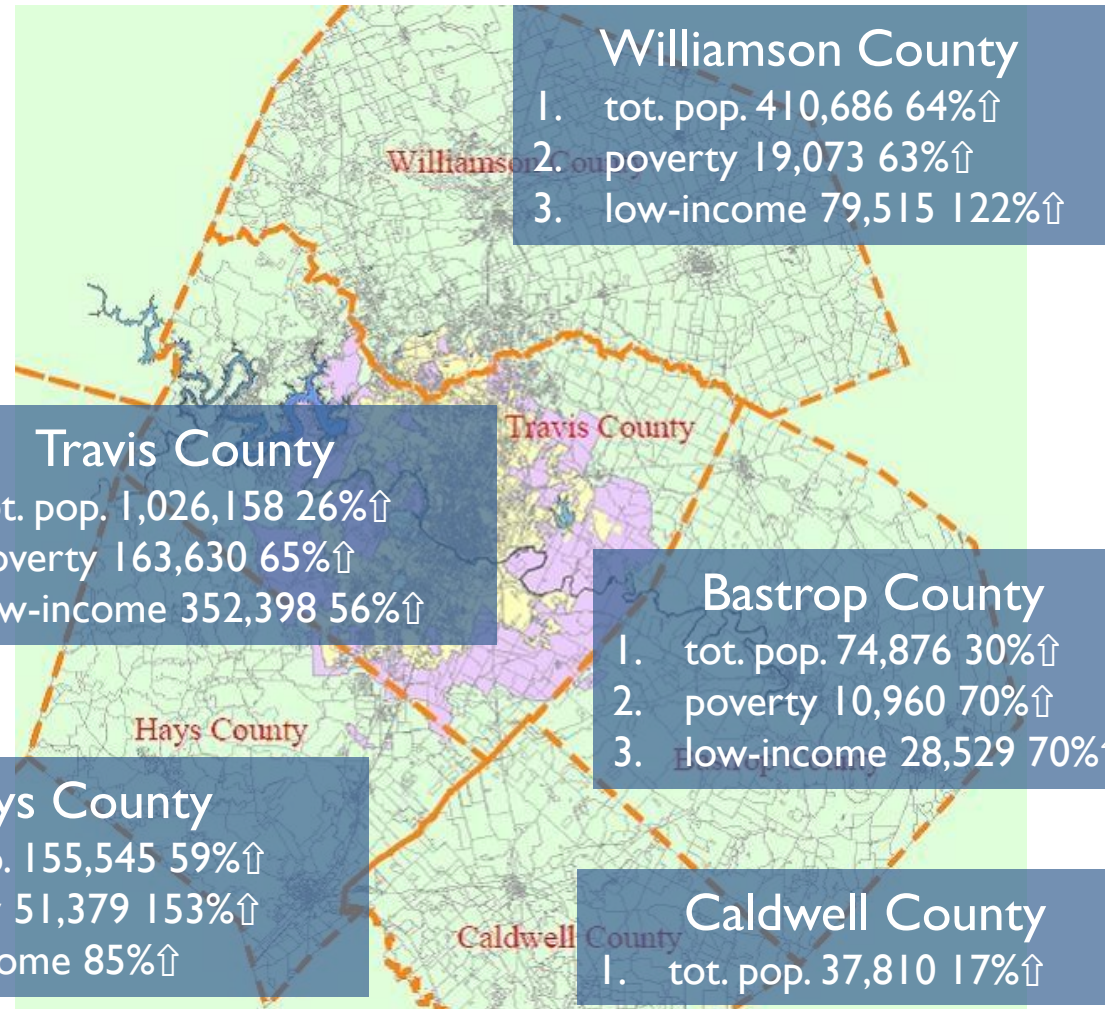
Community Overview

Presentation to CAN Board of Directors and
Travis County Legislative Delegation

January 14, 2011

Austin-Round Rock MSA 2000 - 2009

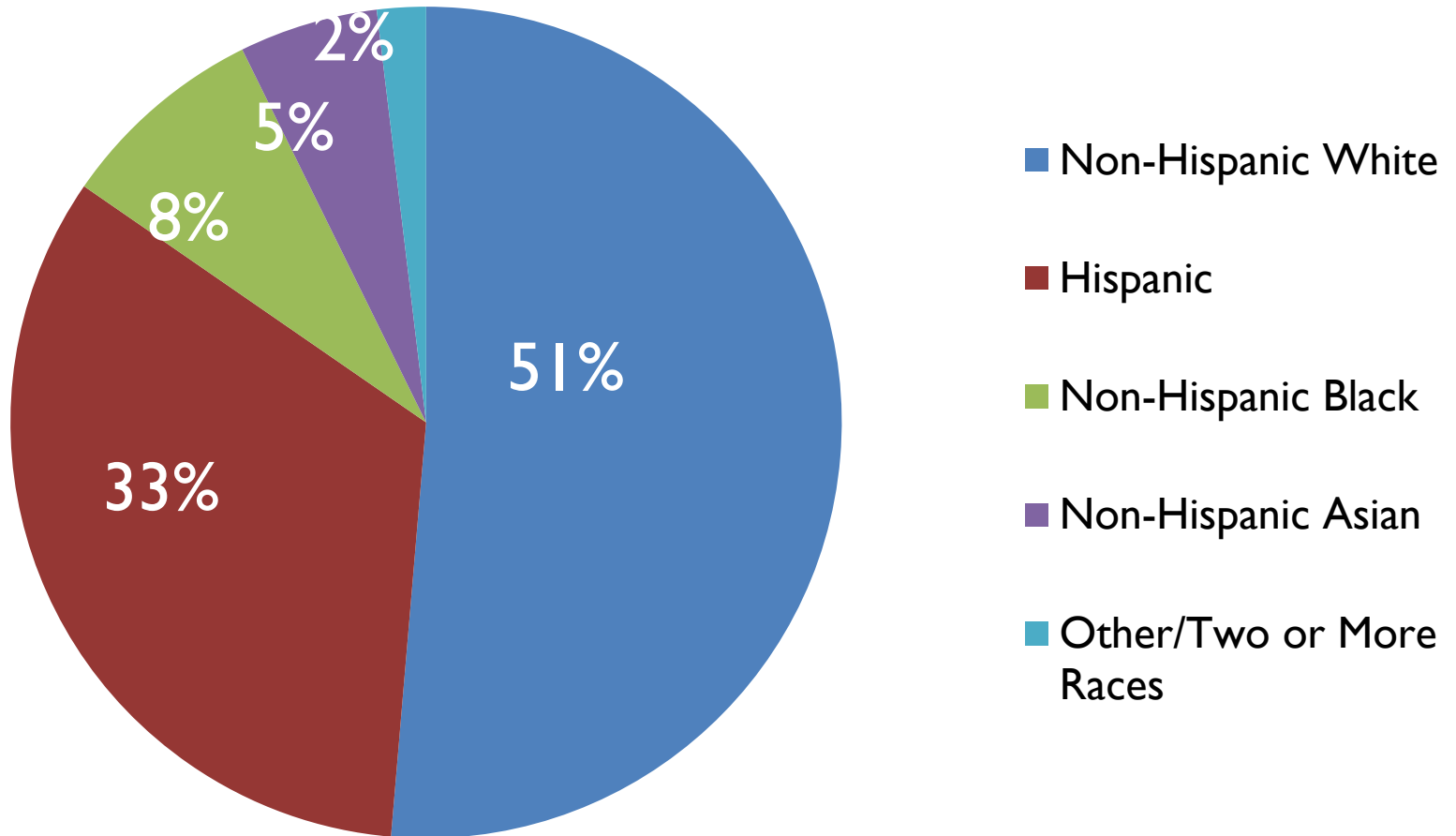
1. 2009 Population # and % Growth since 2000
2. 2009 Poverty # and % Growth since 2000
3. 2009 Low Income and % Growth since 2000



Source: U.S. Census Bureau (American Community Survey 1-Yr. Estimates and Decennial Census)

Travis County 2009

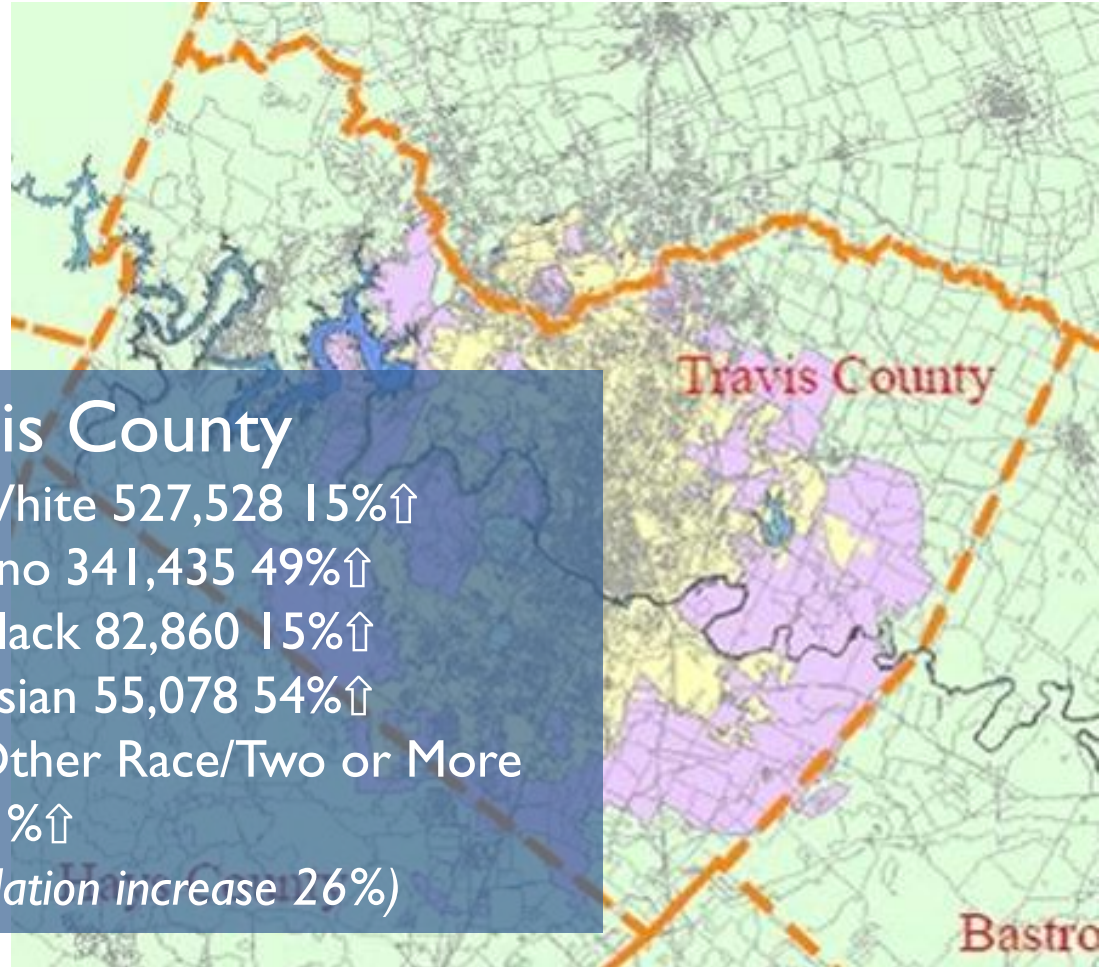
Population by Race/Ethnicity



Source: 2009 American Community Survey 1-Year Estimates

Change in Ethnic Diversity Over Time

2009 Population # by
Race/Ethnicity and
% Growth since 2000



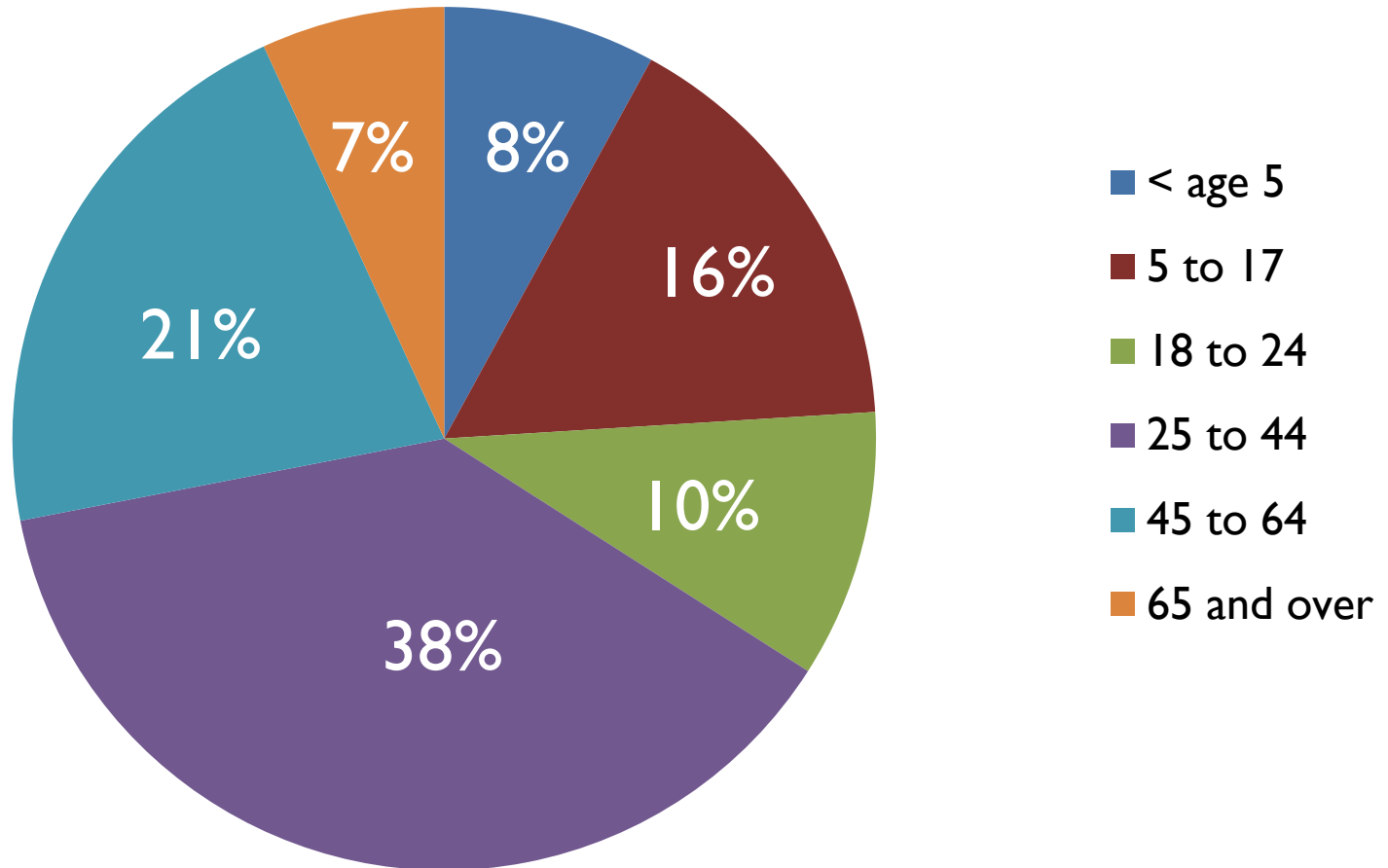
- Non-Hispanic White 527,528 15%↑
- Hispanic or Latino 341,435 49%↑
- Non-Hispanic Black 82,860 15%↑
- Non-Hispanic Asian 55,078 54%↑
- Non-Hispanic Other Race/Two or More Races 19,257 11%↑

(Total population increase 26%)

Source: U. S. Census Bureau (American Community Survey 1-Yr. Estimates and Decennial Census)

Travis County 2009

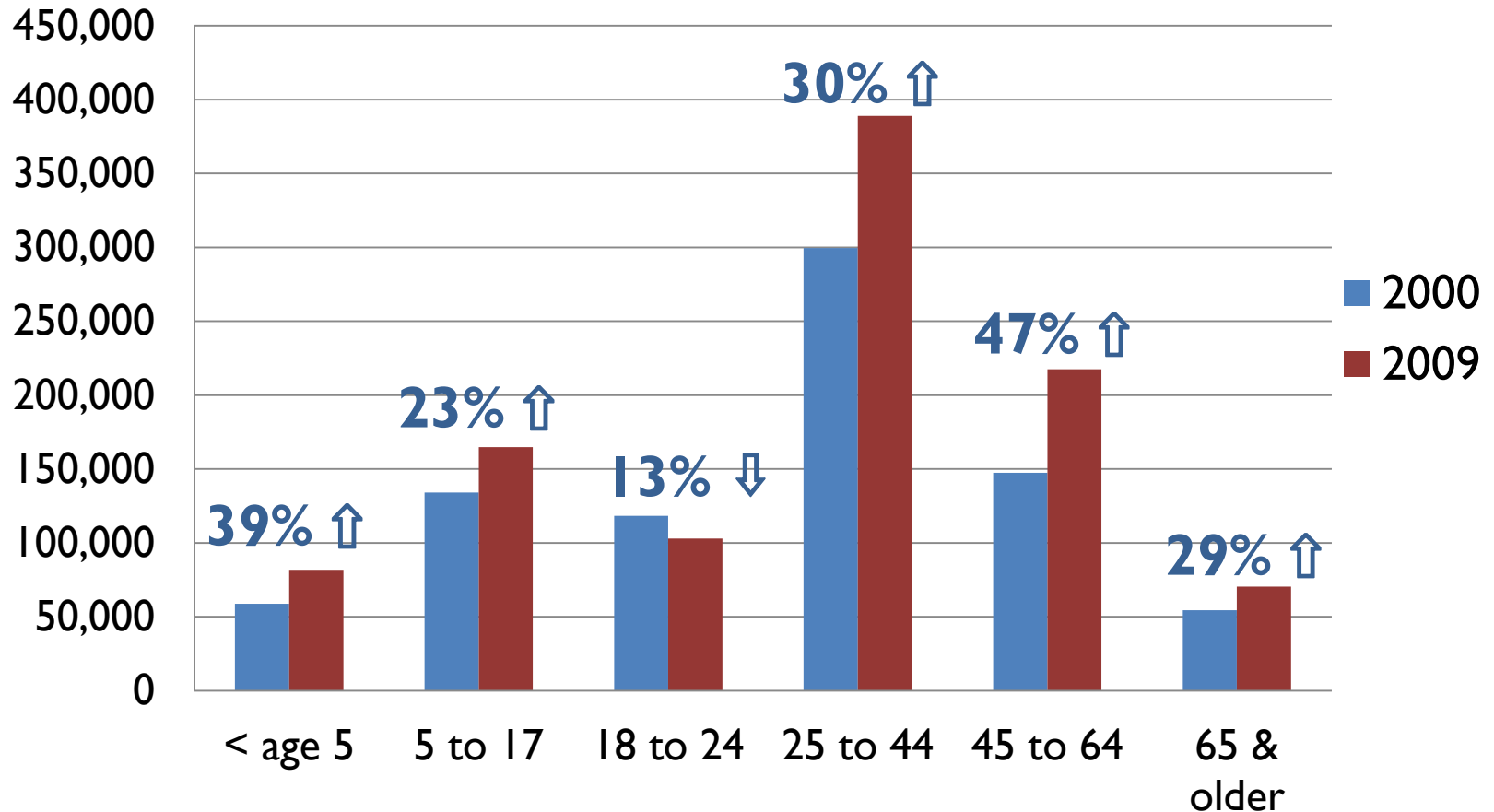
Population by Age



Source: 2009 American Community Survey 1-Year Estimates

Travis County 2000 – 2009

Growth in Population by Age



Source: 2009 American Community Survey 1-Year Estimates

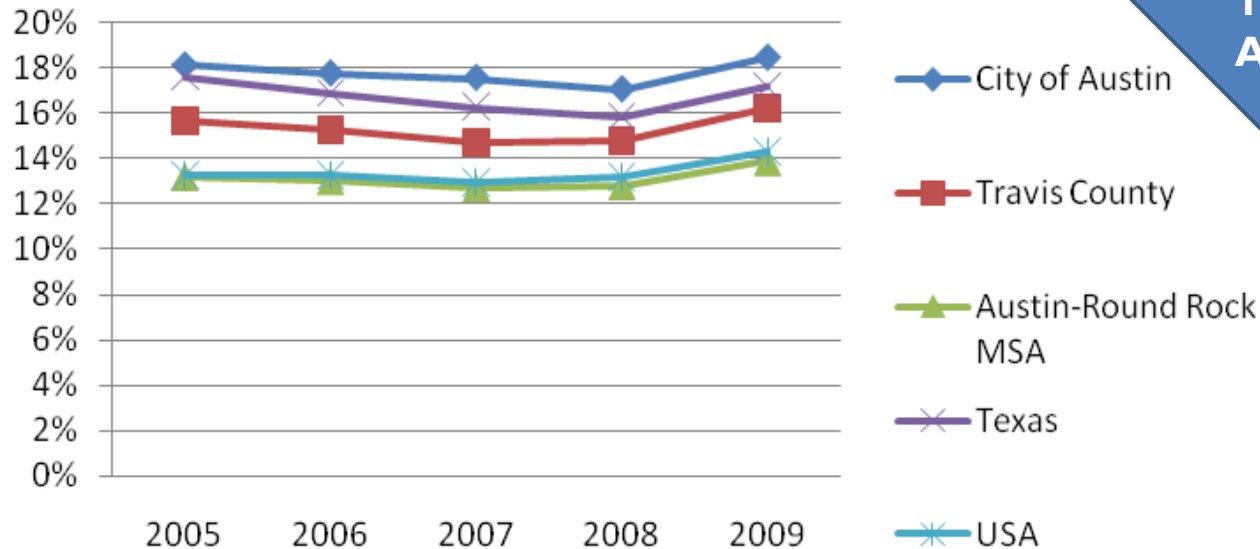
Federal Poverty Guidelines

Persons in family	Poverty guideline
1	\$10,830
2	14,570
3	18,310
4	22,050
5	25,790
6	29,530
7	33,270
8	37,010

For families with more than 8 persons, add \$3,740 for each additional person.

People living in poverty

% of individuals living in poverty



Source: American Community Survey, 1 Yr. Estimates

163,630 people in Travis County and 142,930 in the City of Austin live in poverty.

Racial Inequities

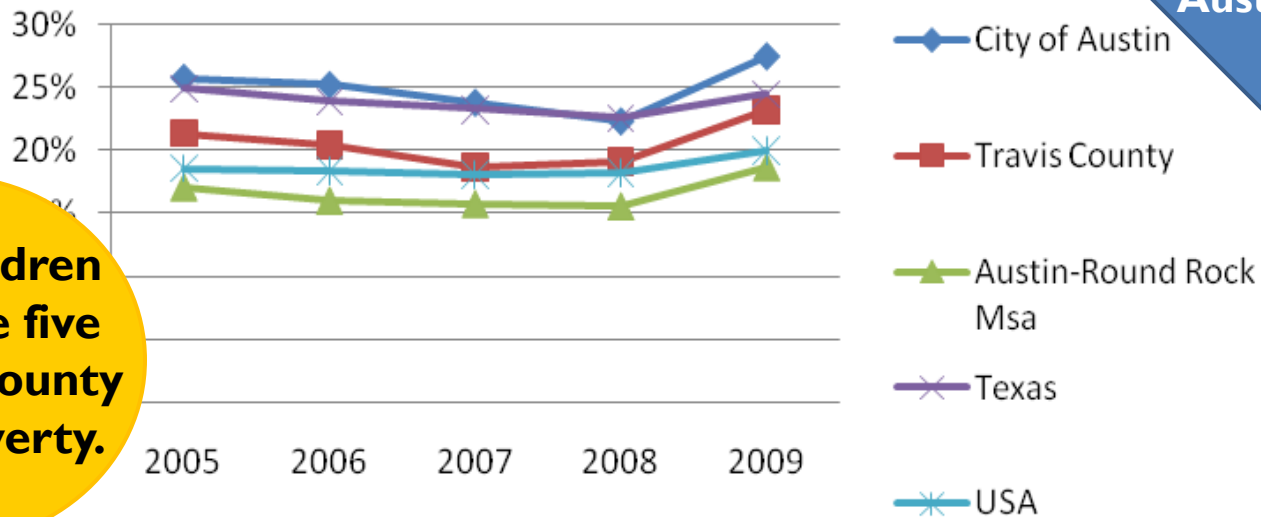
Travis County poverty rates by race and ethnicity:

- ▶ 27% of all Hispanics
- ▶ 21% of all African Americans
- ▶ 10% of all Asians
- ▶ 10% of all non-Hispanic Whites



Age Inequities

% of children and youth under the age of 18 who live in poverty



56,690 children in Travis County and 47,608 in the City of Austin live in poverty.

1 in 4 children under age five in Travis County live in poverty.

Source: American Community Survey, 1 Yr. Estimates

The impact of childhood poverty

- ▶ Boys are three times more likely to be incarcerated as adults.
- ▶ Girls are five times more likely to have a child out of wedlock before the age of 21.
- ▶ As adults, they complete two fewer years of schooling.
- ▶ As adults, they earn half as much as children raised in non-poor households.



For more information on childhood poverty and sources for this data, visit

http://caction.org/faqs/BasicNeeds_2010.pdf

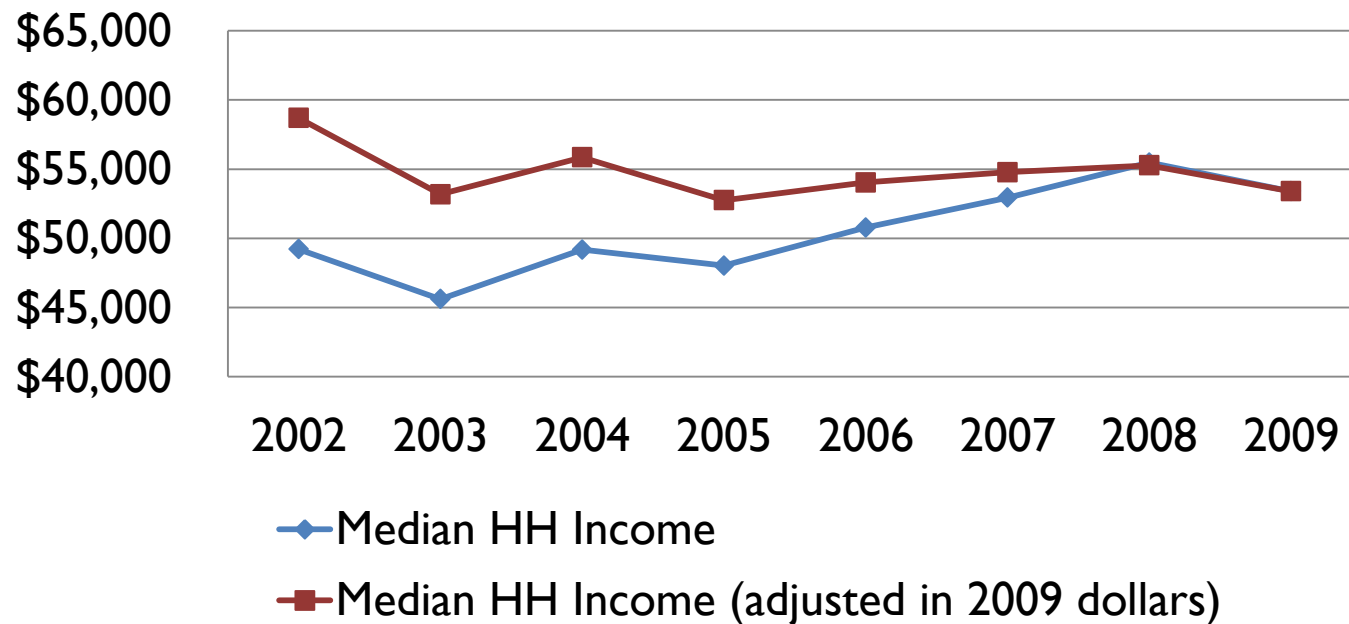
What it cost to get by in Austin MSA

2007 estimates by the Center for Public Policy Priorities

Family of 2 adults and 2 children	With Employer Insurance	Without Employer Insurance
Housing	\$836	\$836
Food	\$491	\$491
Child care	\$841	\$841
Medical	\$427	\$1,061
Transportation	\$482	\$482
Other Necessities	\$360	\$334
Monthly Expenses	\$3,437	\$4,045

Median Income is falling

Travis County Annual Median Household Income



Source: Travis County HHS/VS Research & Planning Division, 2010
[Travis County Snapshot from American Community Survey 2009](#)



“Low-income” is 200% FPL

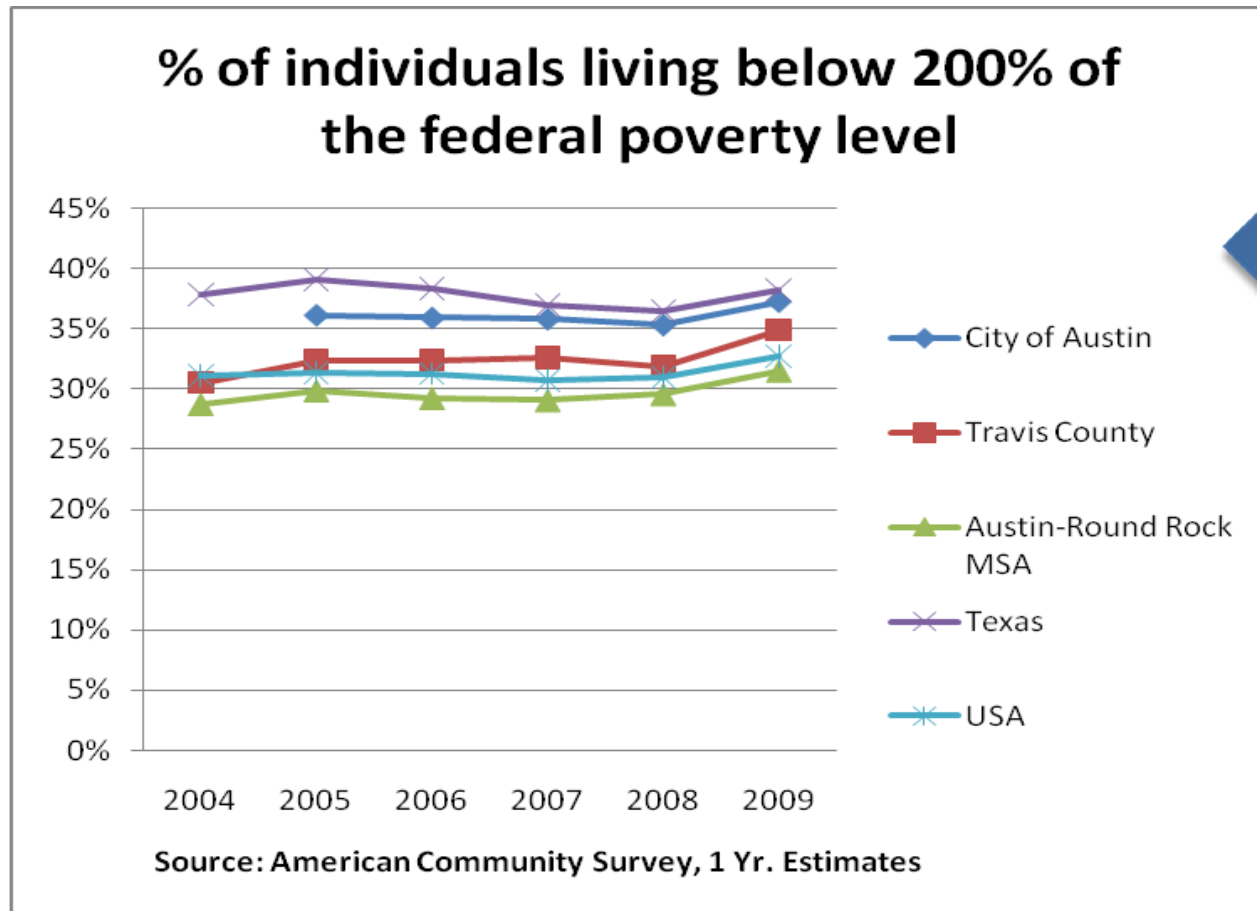
Most researchers and policymakers agree a family must earn at least two times the federal poverty level to meet basic needs.

A family of four is considered to be low-income if they earn **\$44,100**.

[National Center for Children in Poverty](#)



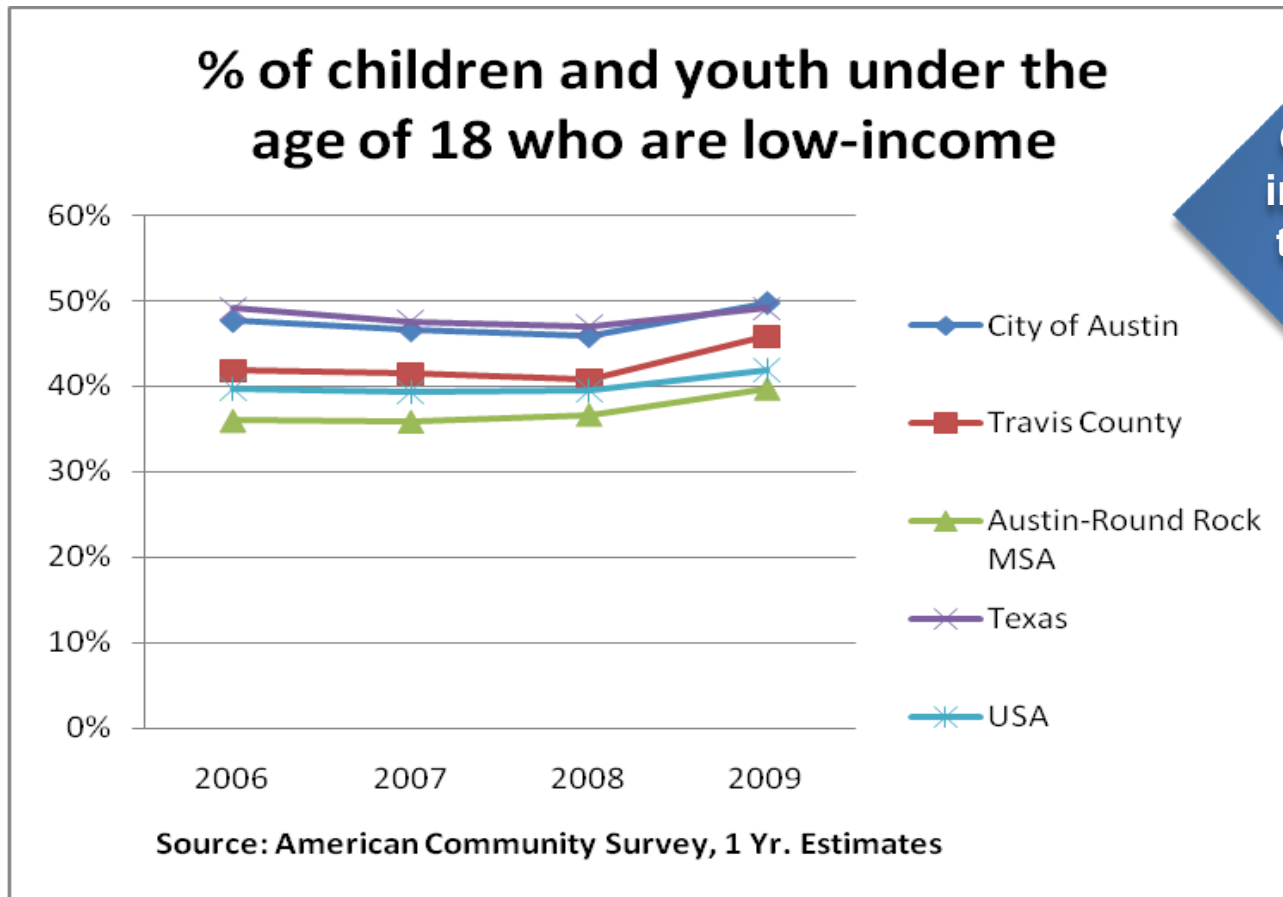
More than one-third are low income



352,398 people in Travis are low income. 288,836 of them live in the City of Austin.



One-half of children are low-income



One-half of all children in the City of Austin and the state of Texas were low-income in 2009.

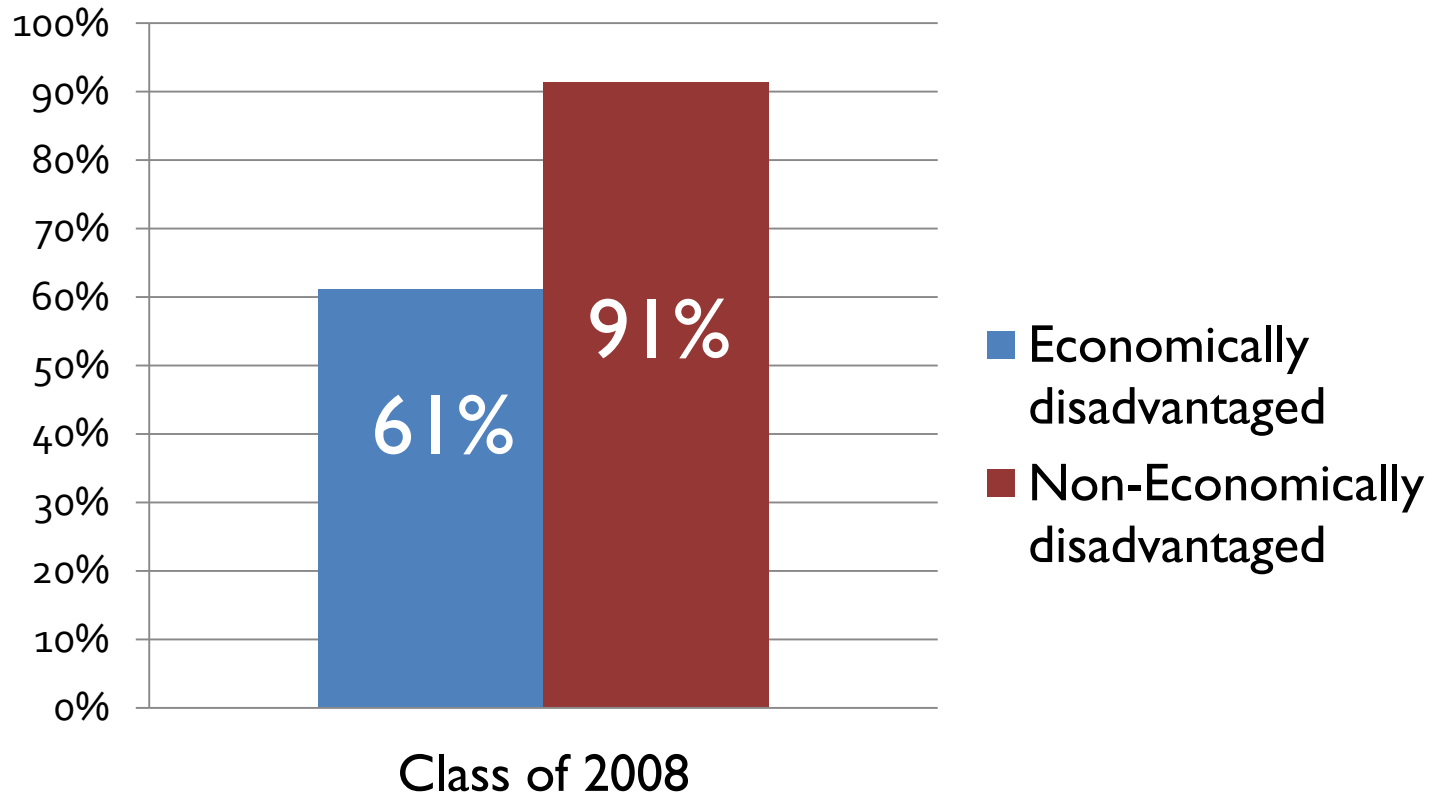
Impact of low income is far reaching

2010 Community Council forums revealed people who are low income are...

- ▶ Less likely to graduate in four years
- ▶ Less likely to be “college ready”
- ▶ More likely to smoke
- ▶ More likely to be obese
- ▶ Less likely to have health insurance
- ▶ More likely to report “poor mental health days”
- ▶ Less likely to find housing they can afford

% who graduate high school in 4 years

AISD Four Year Graduation Rate by Income



Source: Texas Education Agency

% who graduate “college ready”

% of Austin ISD graduates who are college ready by economic status



College ready data for “non-economically disadvantaged” graduates was not available.

Source: Texas Education Agency



Workers with no advanced degree are more likely to be unemployed

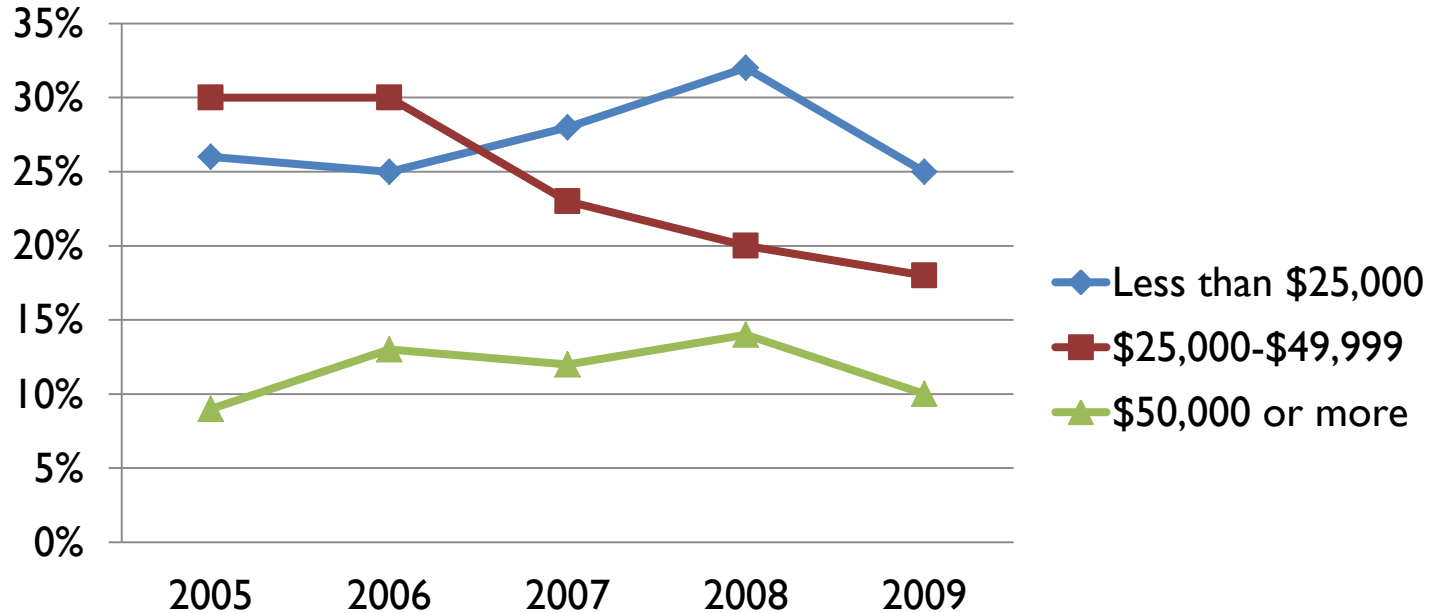
Education Level	UI Claimants	% Tot. UI Claimants	% Total Population
Less than 9 th grade	2,632	5.4%	
9 th to 12 th grade, no diploma	3,452	7.1%	
HS grad	12,830	26.5%	
Some college, no degree	21,671	44.7%	
Associate's degree		6.7%	6.8%
Bachelor's degree		2.4%	24.5%
Graduate/prof. degree		7.2%	13.7%

84% of all Claimants had no post secondary degree

People with degrees make up 45% of pop, but only 15% of unemployment lines

Austin MSA smokers by income

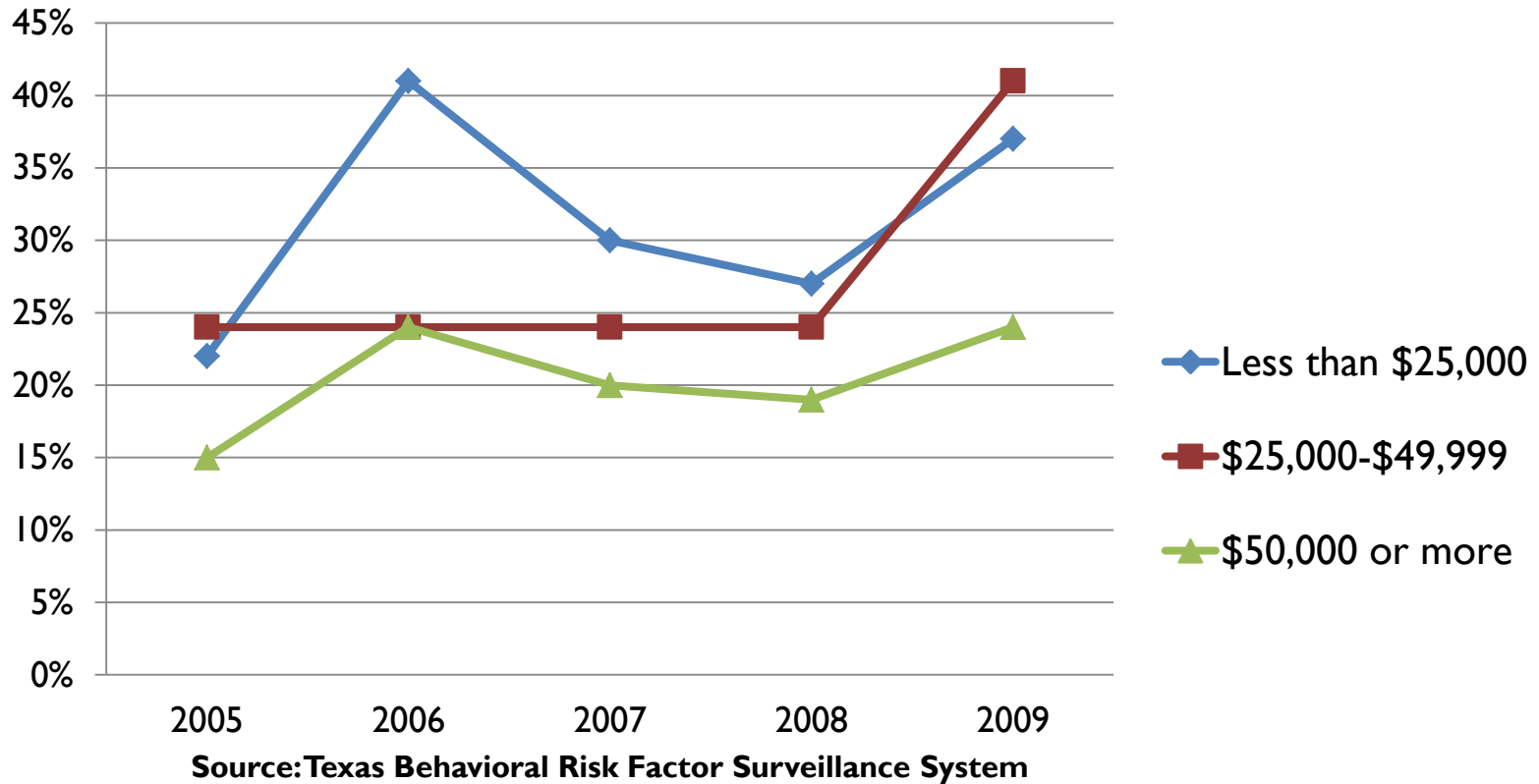
% of adults who are current smokers by income



Source: Texas Behavioral Risk Factor Surveillance System

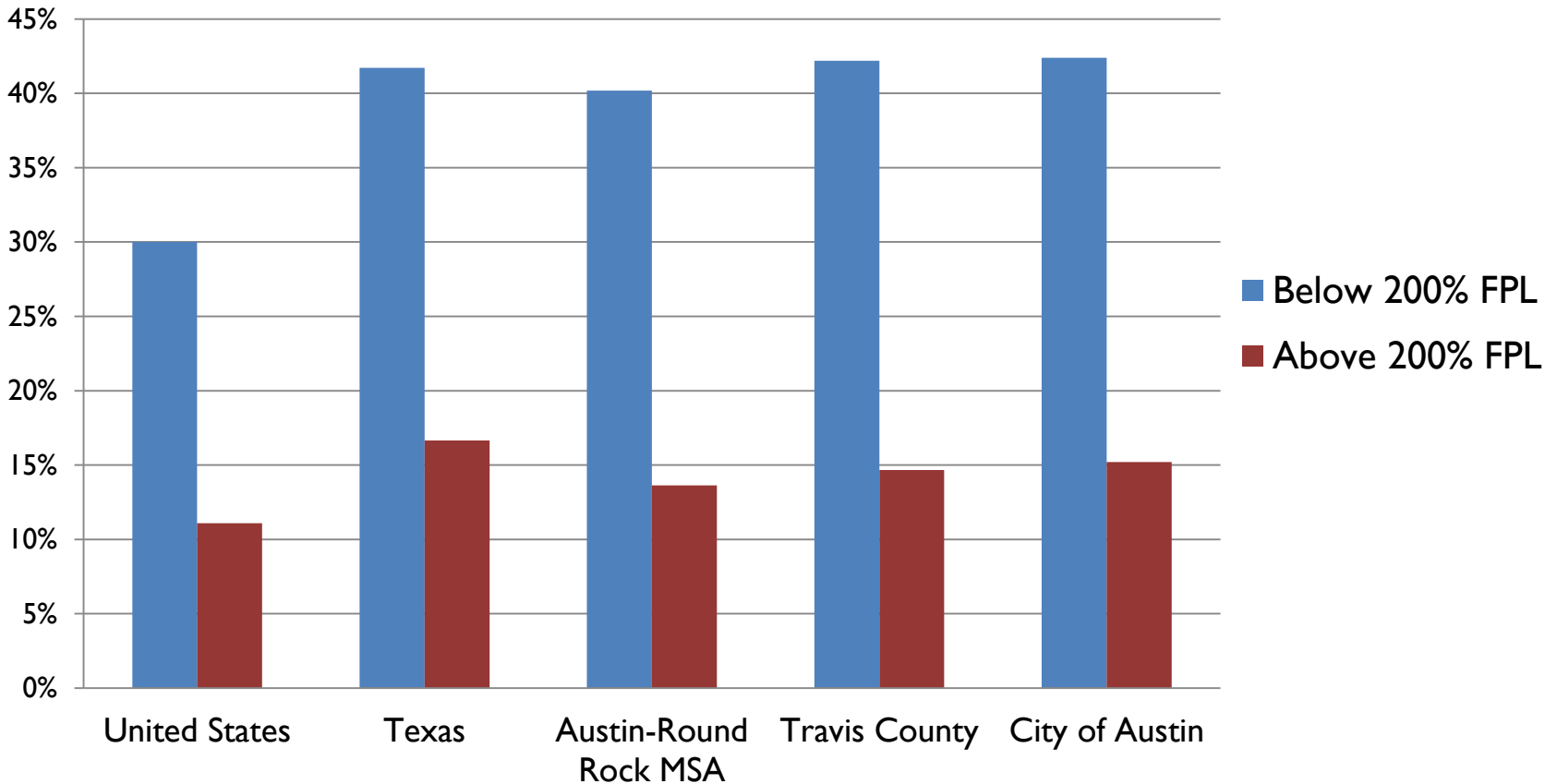
Austin MSA obesity by income

% of adults who are obese by income



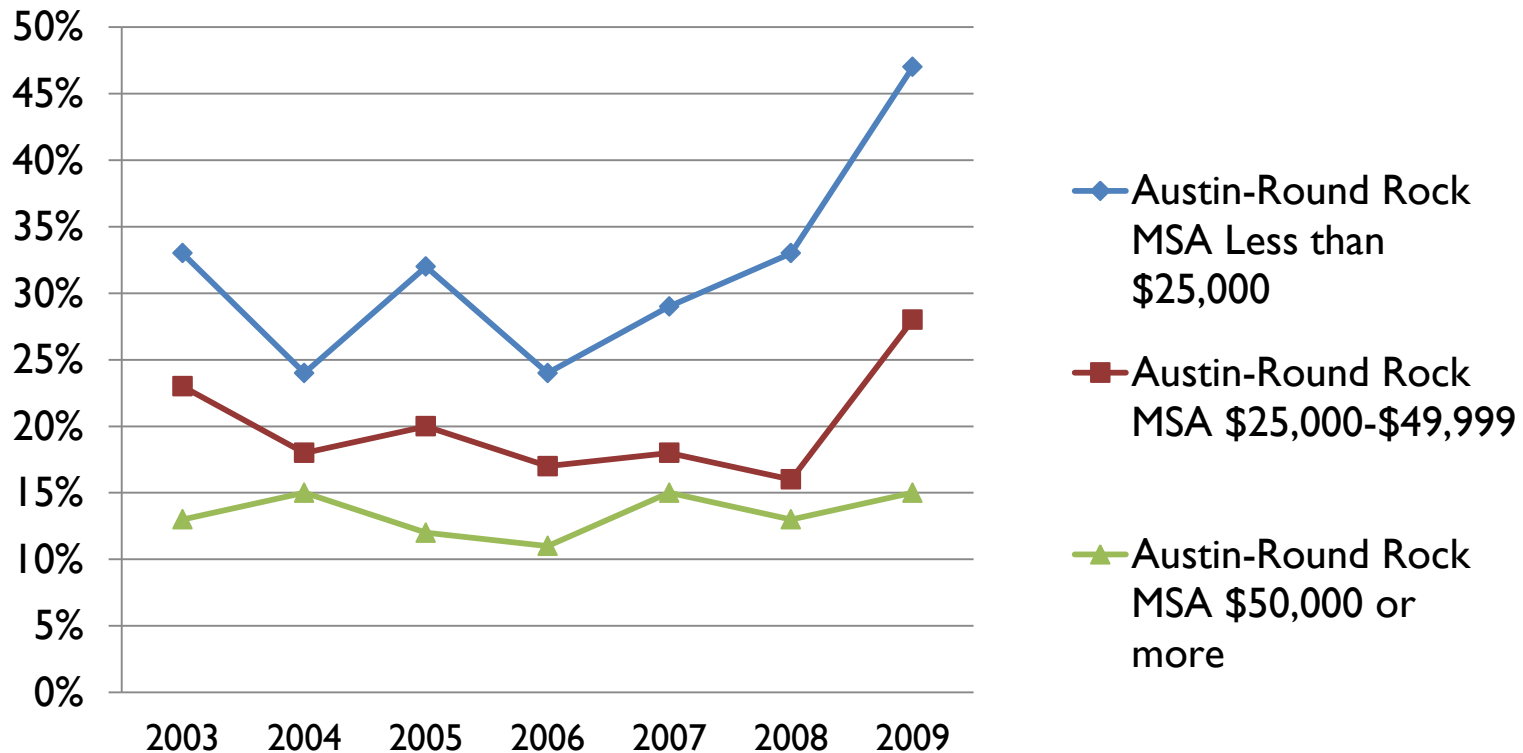
% with no health insurance

% under the age of 65 who are uninsured by economic status



Source: American Community Survey, 1 Yr. Estimates

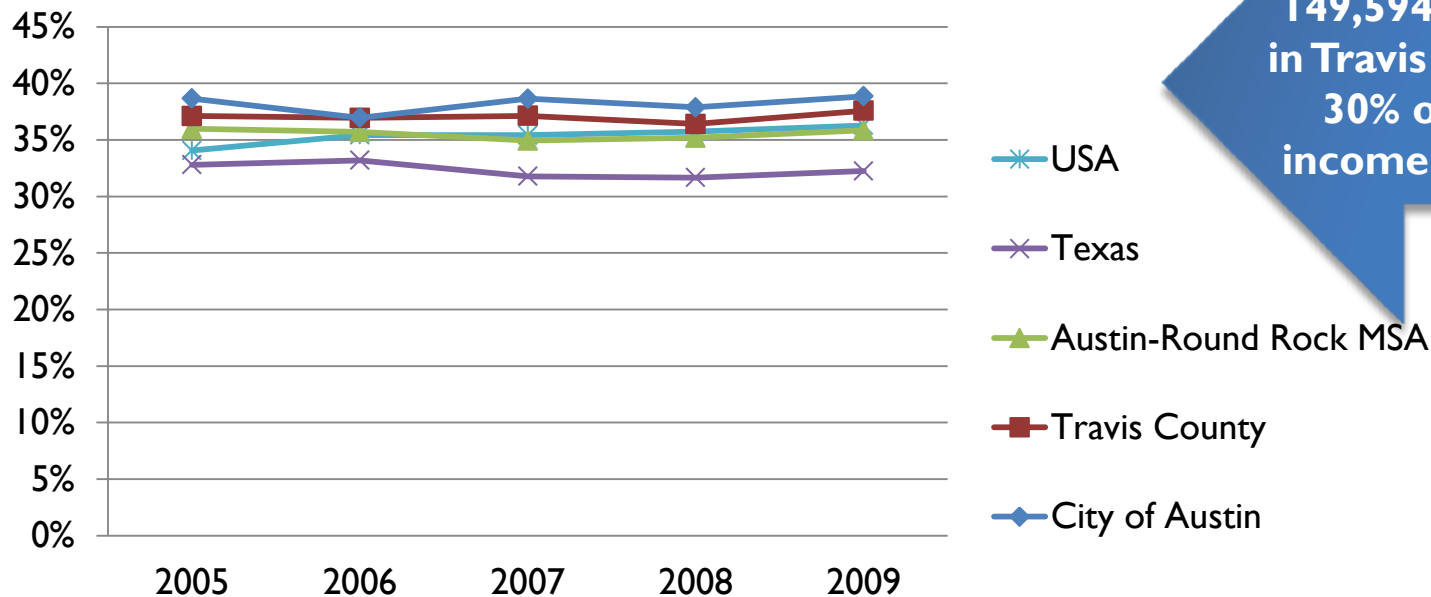
% reporting 5 or more poor mental health days in the past month



Source: Texas Behavioral Risk Factor Surveillance System

38% pay too much for housing

% of households that are cost-burdened

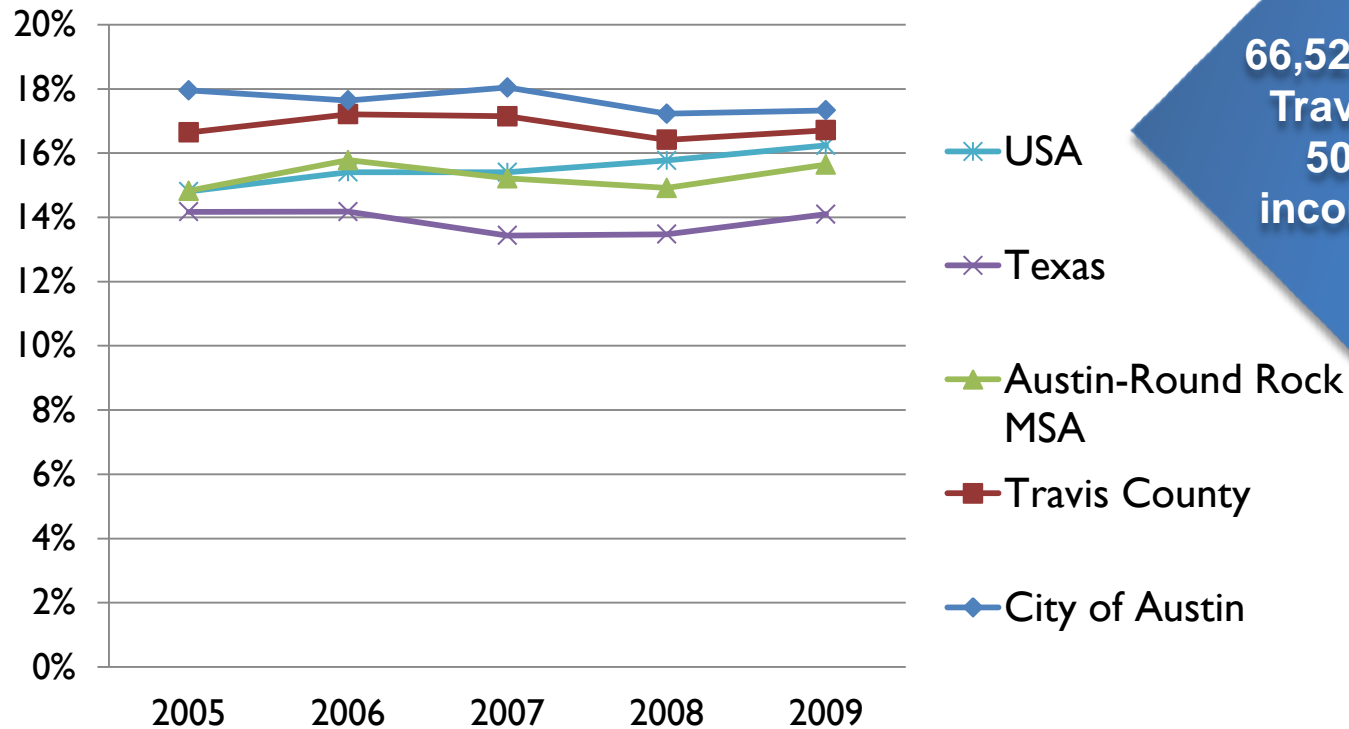


149,594 households in Travis County paid 30% or more of income on housing.

Source: American Community Survey, 1 Yr. Estimates

17% face extreme housing cost burden

% of households that are extreme cost-burdened

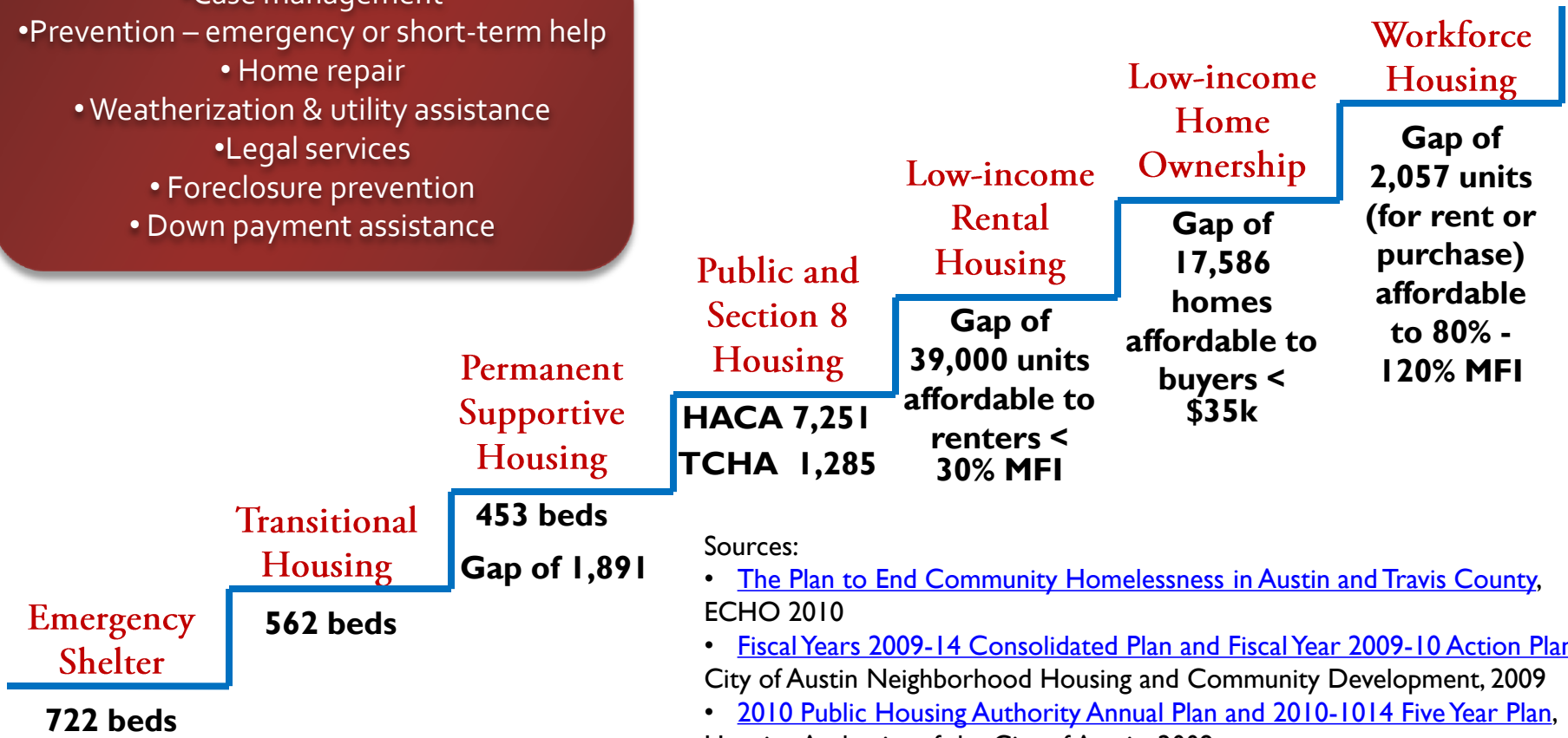


66,527 households in Travis County paid 50% or more of income on housing.

Source: American Community Survey, 1 Yr. Estimates

The Housing Continuum

- Case management
- Prevention – emergency or short-term help
 - Home repair
- Weatherization & utility assistance
 - Legal services
- Foreclosure prevention
- Down payment assistance



Sources:

- [The Plan to End Community Homelessness in Austin and Travis County, ECHO 2010](#)
- [Fiscal Years 2009-14 Consolidated Plan and Fiscal Year 2009-10 Action Plan, City of Austin Neighborhood Housing and Community Development, 2009](#)
- [2010 Public Housing Authority Annual Plan and 2010-1014 Five Year Plan, Housing Authority of the City of Austin, 2009](#)
- [Annual Action Plan for Program Year 2009, Travis County 2009](#)
- [Travis County Housing Authority](#)

Contact us

Community Action Network office

www.caction.org (512)414-0323

Vanessa Sarria, Executive Director

vsarria@austinisd.org (512)414-0325

Mary Dodd, Assistant Director

mary.dodd@austinisd.org (512)414-0326

Chantel Bottoms, Program Associate

chantel.bottoms@austinisd.org (512)414-0327

Karen Cook, Web Designer

kcook@caction.org

