



# **Austin/Travis County Health and Human Services Department**

## **African-American Infant Mortality in Austin/Travis County, TX**

**Presented to:**

**Community Action Network Resource Council**

**Presented by**

**Shannon Jones, III, Acting Director  
Austin / Travis County Health and Human Services Department**

**April 11, 2008**



# **Austin/Travis County General Overview**

## **Infant Mortality Rate:**

**The number of children dying under a year of age divided by the number of live births that year.**



# Austin/Travis County General Infant Mortality

- The infant mortality rate in Austin/Travis County for 2004 was 5.8 infant deaths per 1000 live births.
- This does not represent a statistically significant decrease from the 2003 infant mortality rate (6.4/1000)
- The rate has been basically stable since 1990.
- However, the disparities by race/ethnicity are statistically significant and persist year over year.



# Texas and US General Infant Mortality

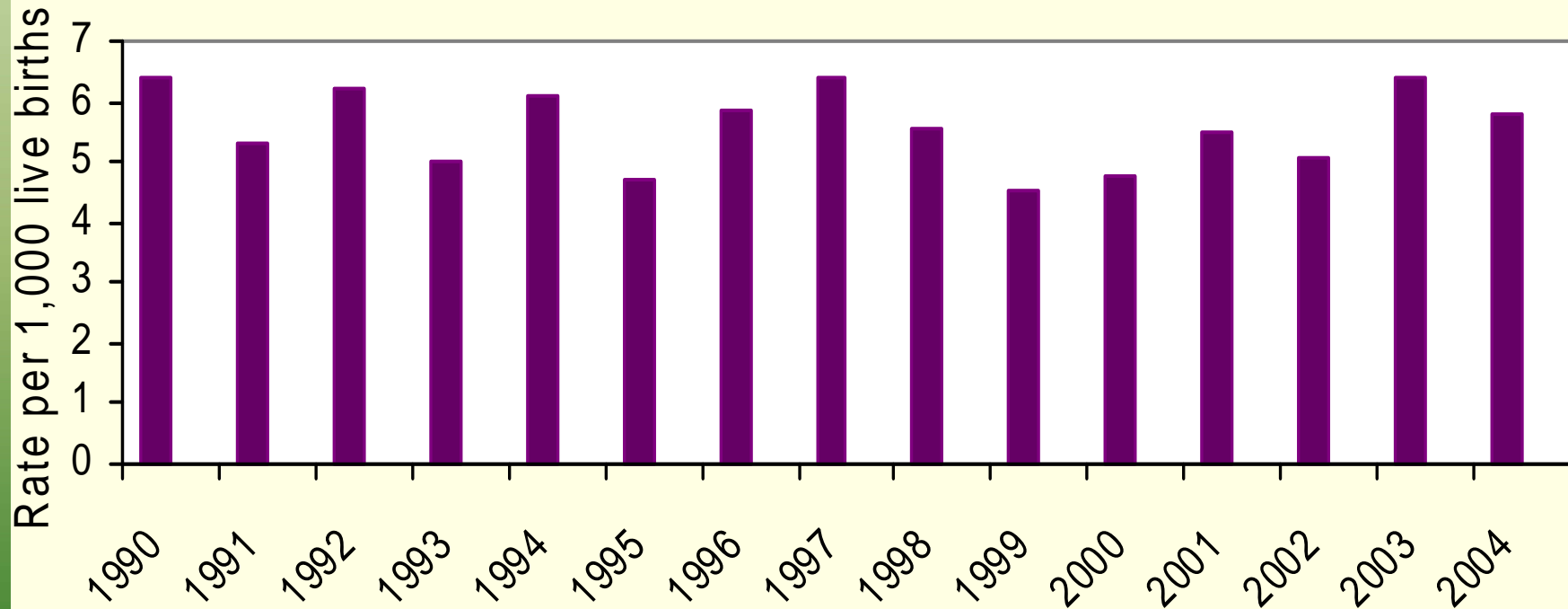
- By comparison, the infant mortality rates for Texas and the U.S. were 6.3 and 6.78, respectively.
- National trends by race/ethnicity echo what we see here in Austin/Travis Co, with nearly threefold disparities with African-American infants.



# Problem

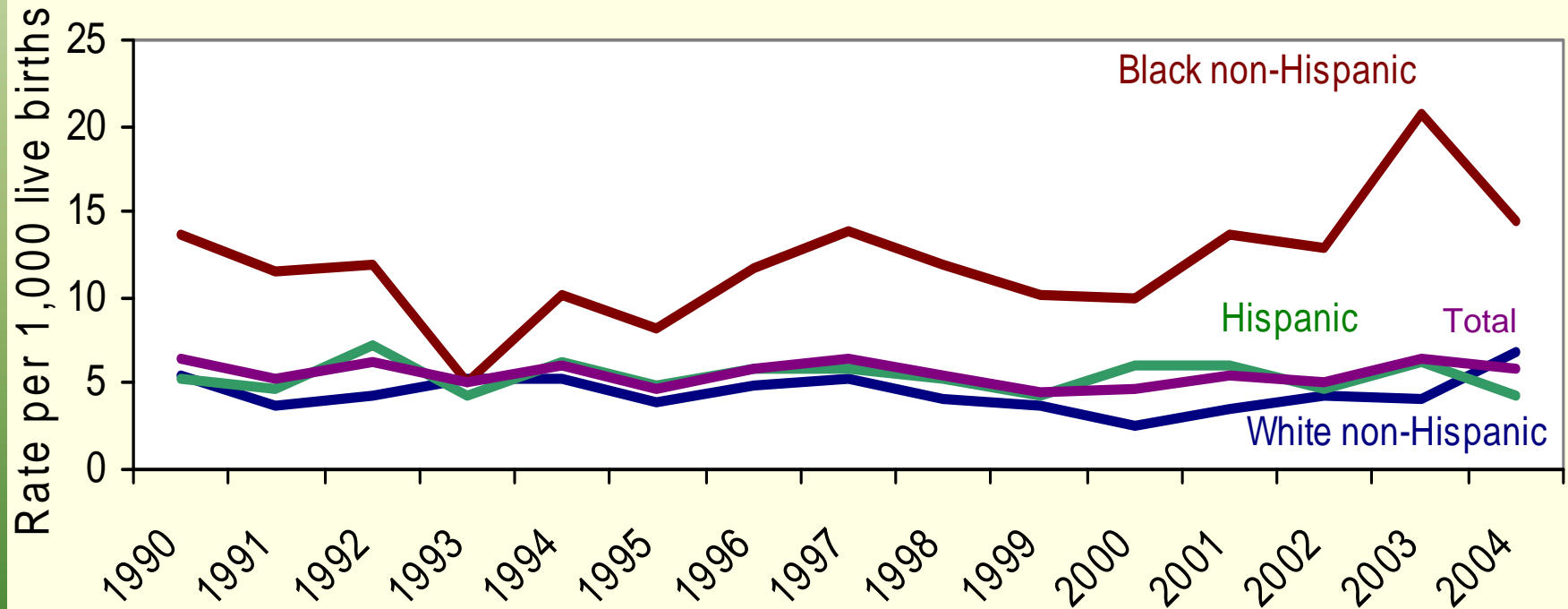
**African-American Infant Mortality is three times that of white infants and more than twice that of Hispanic in Travis County.**

# Overall Infant Mortality rates Travis County for selected years 1990-2004



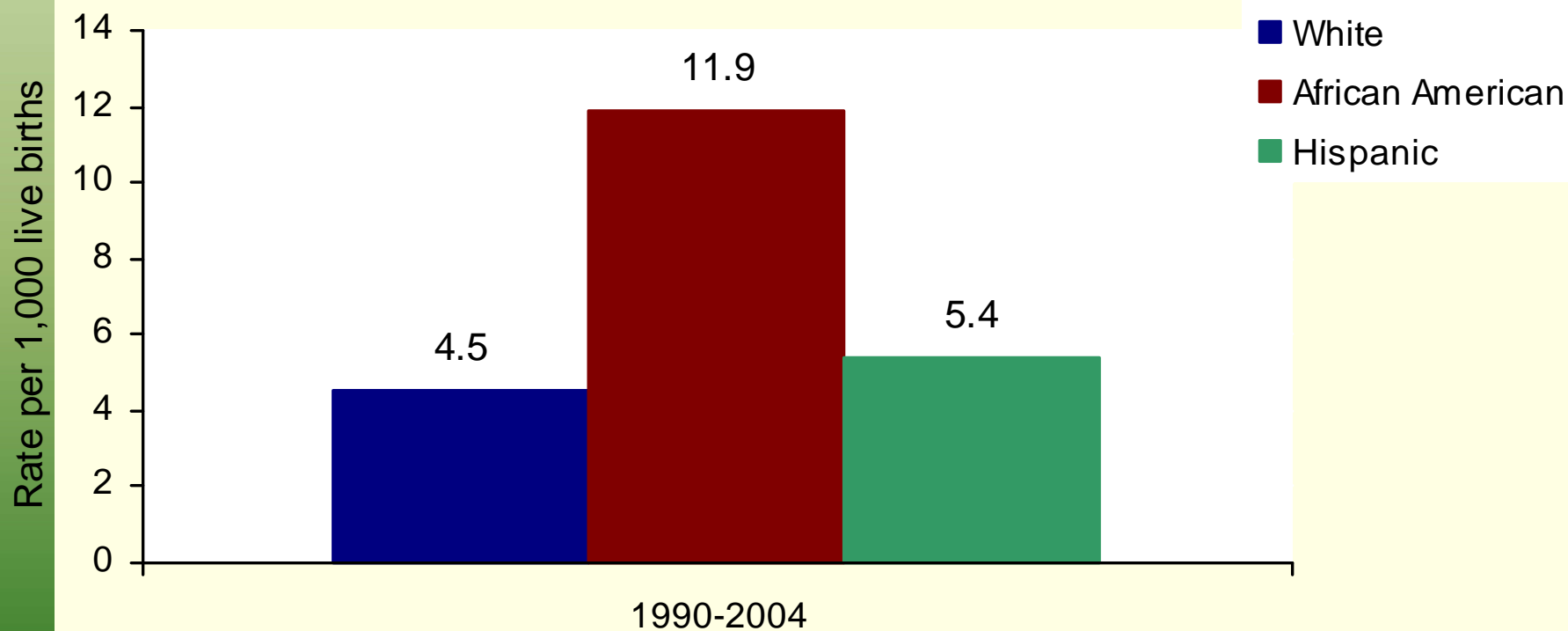
Data source: Texas Department of State Health Services Vital Statistics

# Infant Mortality Rates by Race/Ethnicity, Travis County for selected years 1990-2004



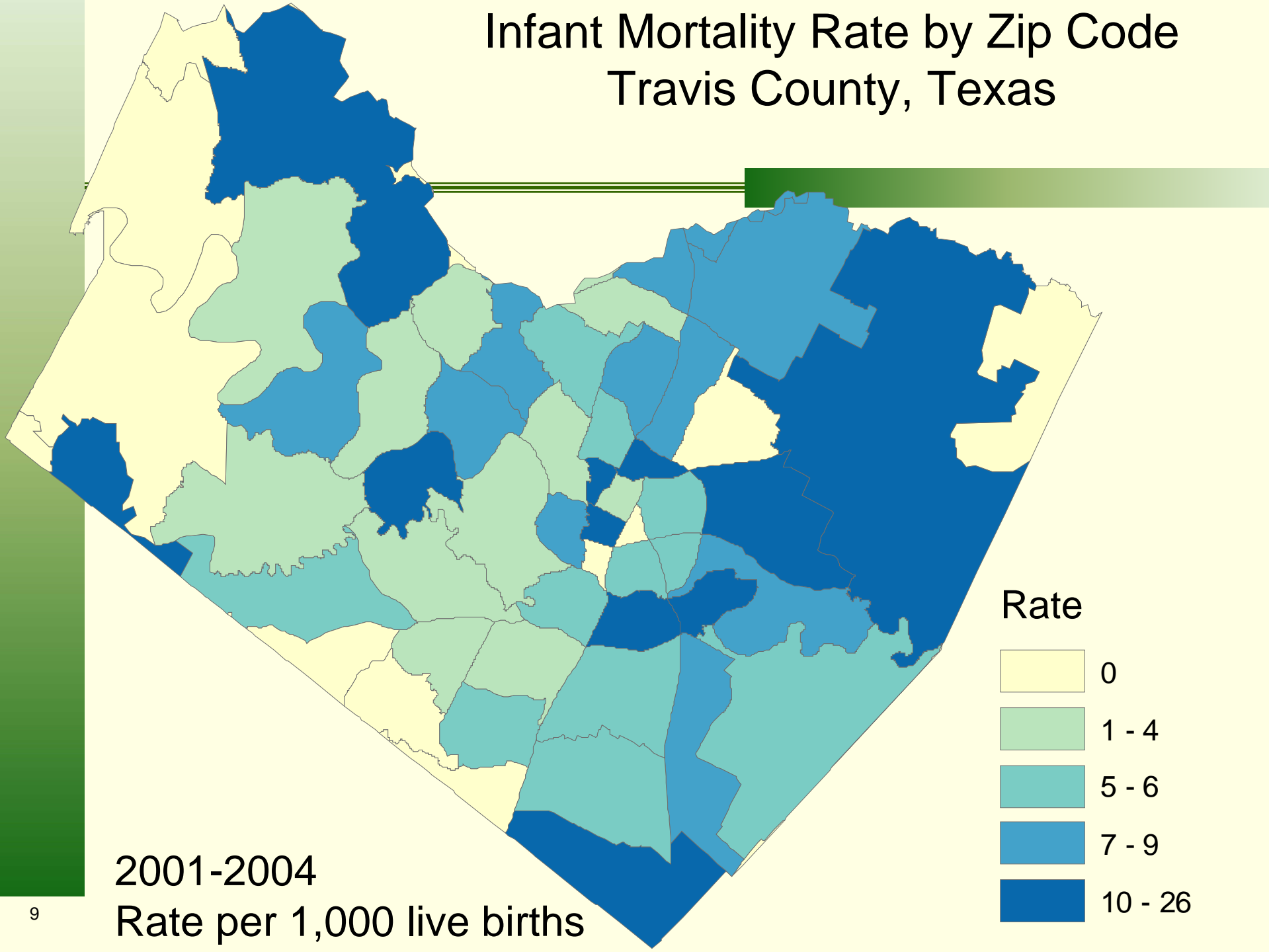
Data source: Texas Department of State Health Services Vital Statistics

# Multi-year Infant Mortality Rates by Race/Ethnicity, Travis County 1990-2004



Data source: Texas Department of State Health Services Vital Statistics, ATCHHSD

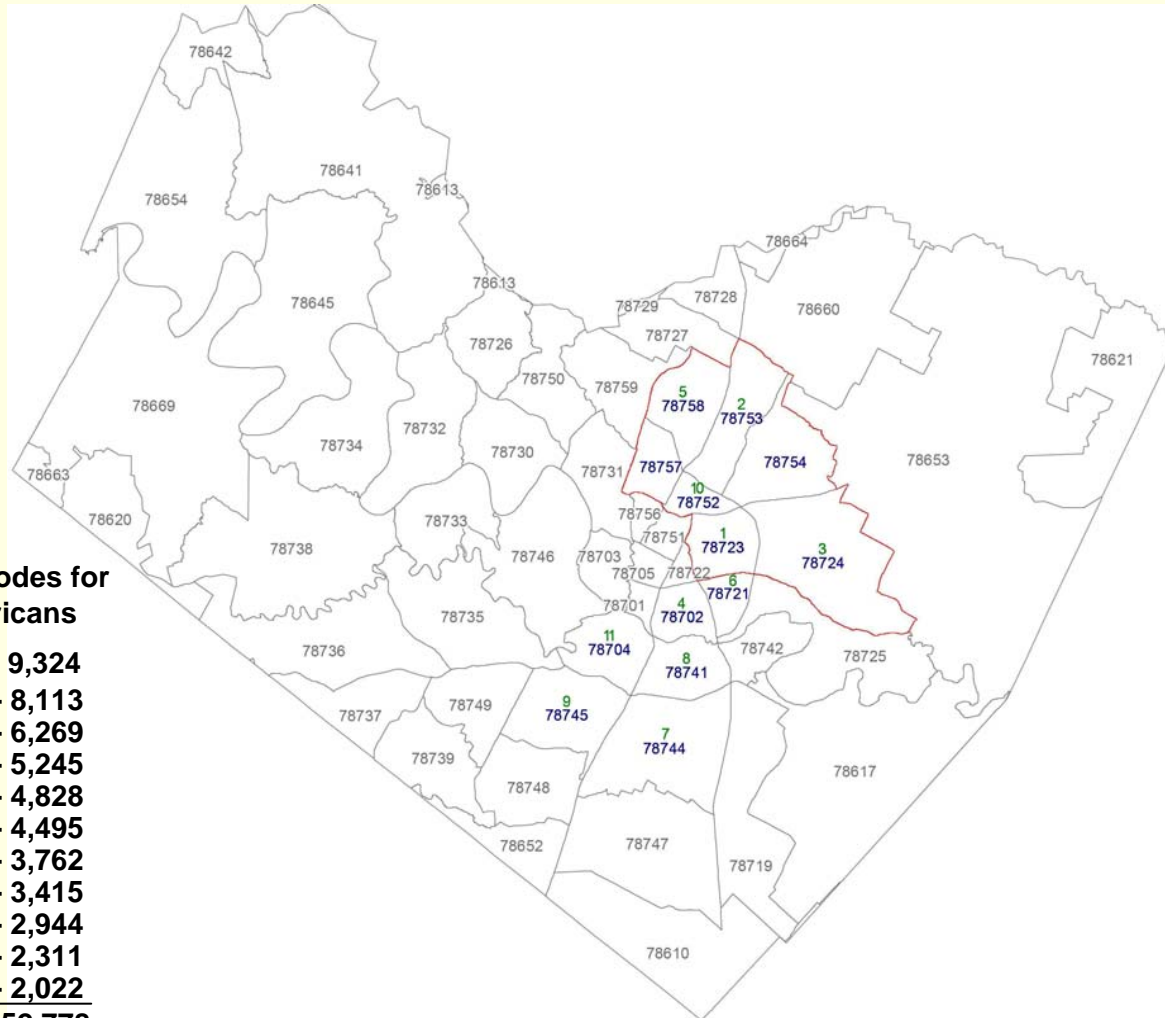
# Infant Mortality Rate by Zip Code Travis County, Texas





# African American Residency

## Austin, Texas by ZIP Codes – 2000 US Census Data



### Top 11 Zip Codes for African Americans

- 1. - 78723 - 9,324
- 2. - 78753 - 8,113
- 3. - 78724 - 6,269
- 4. - 78702 - 5,245
- 5. - 78758 - 4,828
- 6. - 78721 - 4,495
- 7. - 78744 - 3,762
- 8. - 78741 - 3,415
- 9. - 78745 - 2,944
- 10.- 78752 - 2,311
- 11.- 78704 - 2,022

52,778

46% of the 70,000 African Americans in Travis County live in clinic zip codes.

- 1. - 78723 - 9,324
- 2. - 78753 - 8,113
- 3. - 78724 - 6,269
- 5. - 78758 - 4,828
- 10. - 78752 - 2,311
- 00. - 78754 - 881
- 00. - 78757 - 460

Total 32,186

75% of the 70,000 African Americans in Travis County live in 11 zip codes.



# Contributing Factors



- Babies born to mothers who received no prenatal care are three times more likely to be born at low birth weight, and five times more likely to die than those whose mothers received prenatal care. (Source: HRSA Maternal and Child Health Bureau)
- One of main way to address infant mortality is through is early entrance into prenatal care. Therefore our efforts to increase early entrance and adequacy of prenatal care is important.



# Contributing Factors, cont.



- Almost one in five pregnant women in Travis County receive **little or no prenatal care.** (Source: 2004 Texas Vital Statistics, TX Department of State Health Services)
- Alarming disparities among racial groups receiving no prenatal care:
  1. White = 7.8% receiving no prenatal care
  2. Hispanic = 25.9% no prenatal care
  3. African-American = 19.9% no prenatal care



# Contributing Factors, cont.



- **Trends in Low Birth Weight Infants**

An infant with the low birth weight is three times more likely to have a special health care need than the infant born with the normal birth rate

- Travis County - 7.1/1000 births overall were Low Birth Weight (Source: 2004 Texas Vital Statistics, TX Department of State Health Services)

1. White = 6.7 % Low Birth Weight infants
2. Hispanic = 6.5 % Low Birth Weight infants
3. African-American = 13.1 % Low Birth Weight infants



# Local Efforts to Address the Problem



Local **Outreach efforts** focused on African American infants:

1. African-American Quality of Life (AAQL)
2. Healthcare District - AKA Black Clinic
3. Working with AISD and other local school districts
4. Working with local churches
5. Working with March of Dimes
6. Any Baby Can
7. Various other Child Care programs



# Local Efforts to Address the Problem, cont.



## Connecting to prenatal care:

1. **Medical services through Travis County Health Care District (walk In Clinics)**
2. **Mental health services**
3. **WIC**
4. **Childbirth classes**
5. **Support services**
  - ✓ **Parenting preparation**
  - ✓ **Case management**



# Local Efforts to Address the Problem, cont.

## **"Mom Starts Now" media campaign**

City of Austin, Title V, Maternal Child Health Grant

Stresses the importance of early and adequate prenatal care and how to access it in Austin.

## **Faith-based "Mom and Baby Outreach Project" through churches**

HHSD provides bilingual display boards, pulpit announcements and educational presentations, and trainings for volunteers on the importance of prenatal care and healthy pregnancy.



# Local Efforts to Address the Problem, cont.



**Collaborative work with the  
Community Health Centers, WIC,  
Any Baby Can, Family  
Connections, and other agencies**



# Local Efforts to Address the Problem, cont.



## Community Outreach Prevention Team

AAQL Prevention Team Mobile Van serves as a distribution point for information to specific populations, particularly underserved populations.

# Prevention Team Mobile Health Van



# Prevention Team Mobile Health Van





# Austin/Travis County Health and Human Services Department

## Questions/Comments

**Presented by**

**Shannon Jones, III, Acting Director  
Austin / Travis County Health and Human Services Department**

**April 11, 2008**