

# What do we know about homelessness?

Presented by M William Sermons  
@ NLIHC Conference 2011

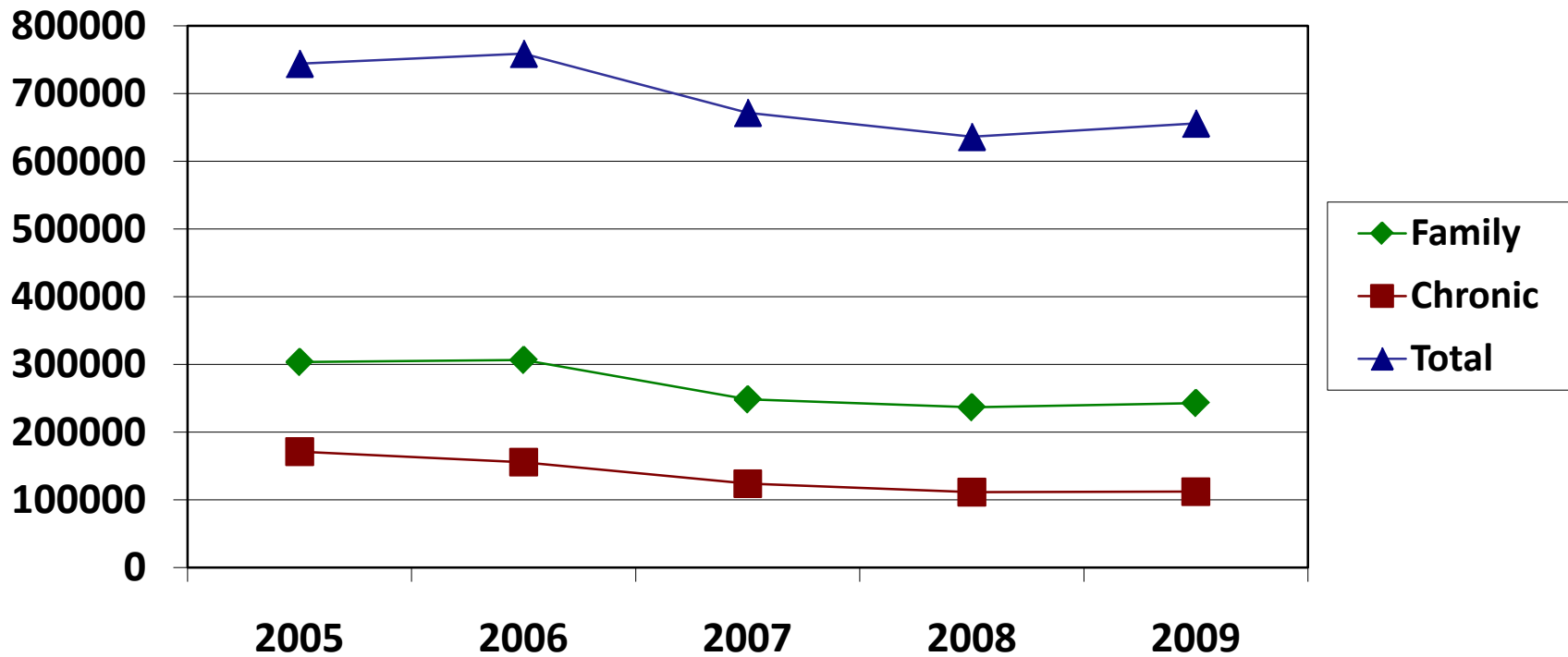


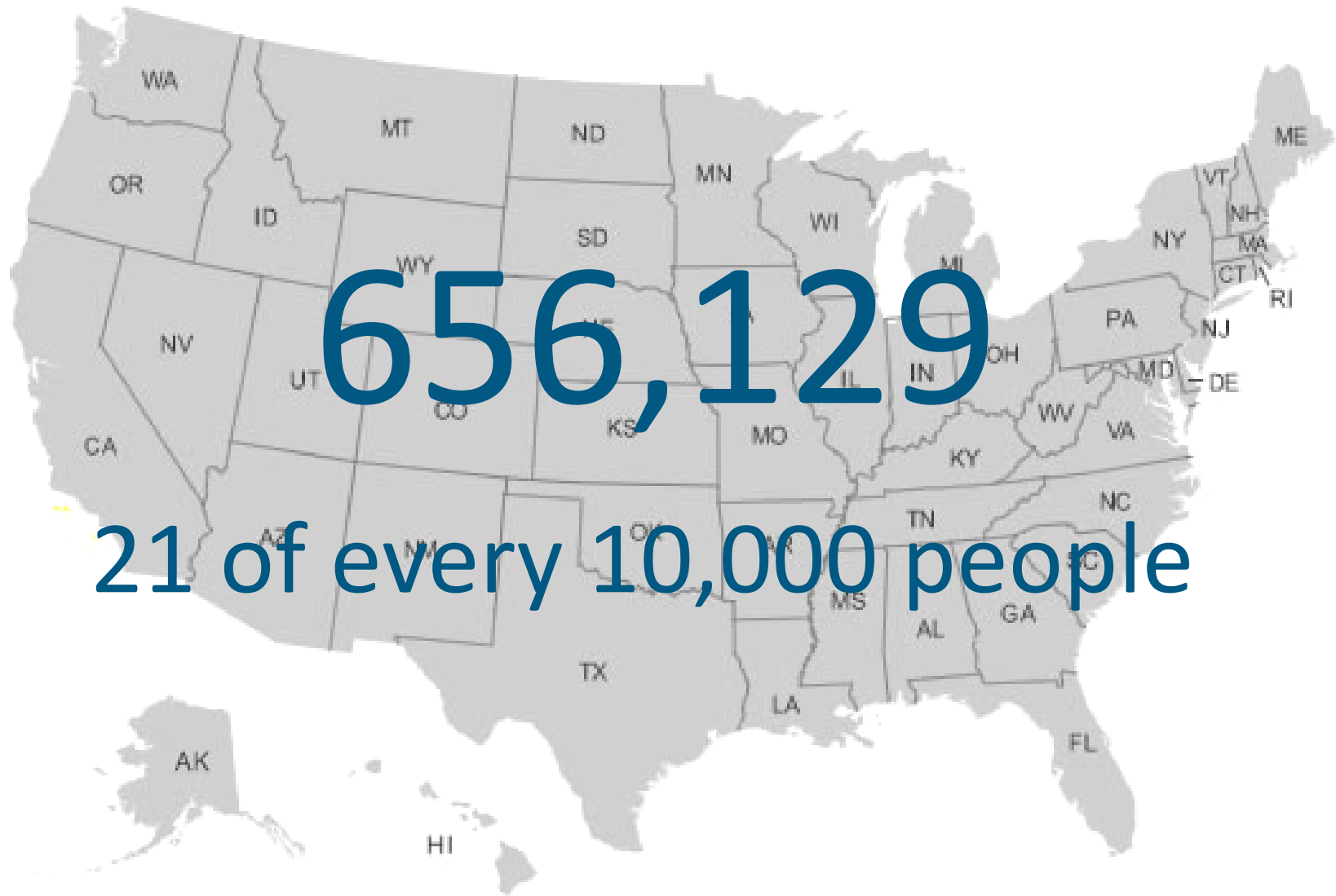
# Overview

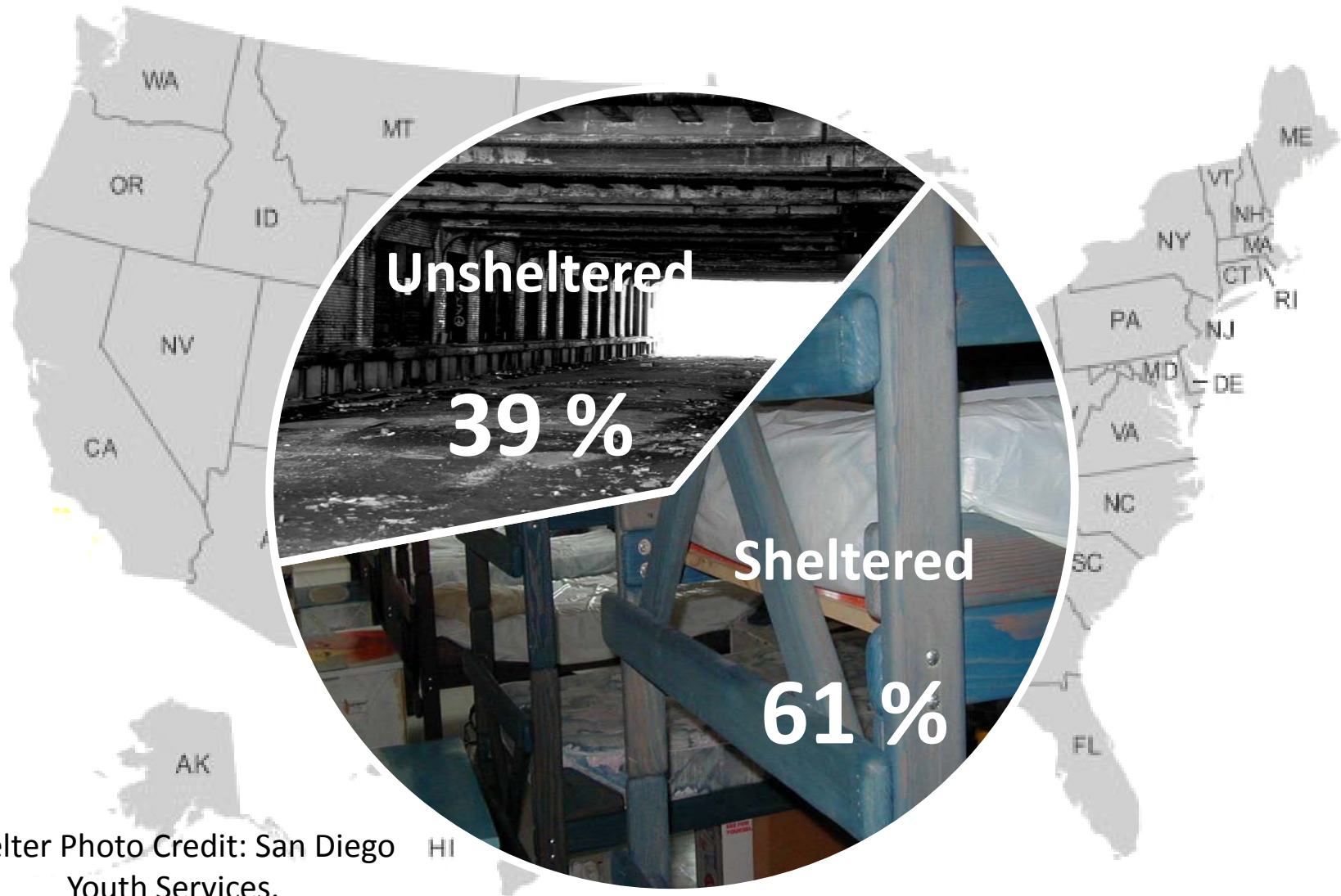
- An enduring portrait of homelessness
- Changes in homelessness from 2008 to 2009
- Economic indicators
- Demographic indicators



# An enduring portrait since 2005

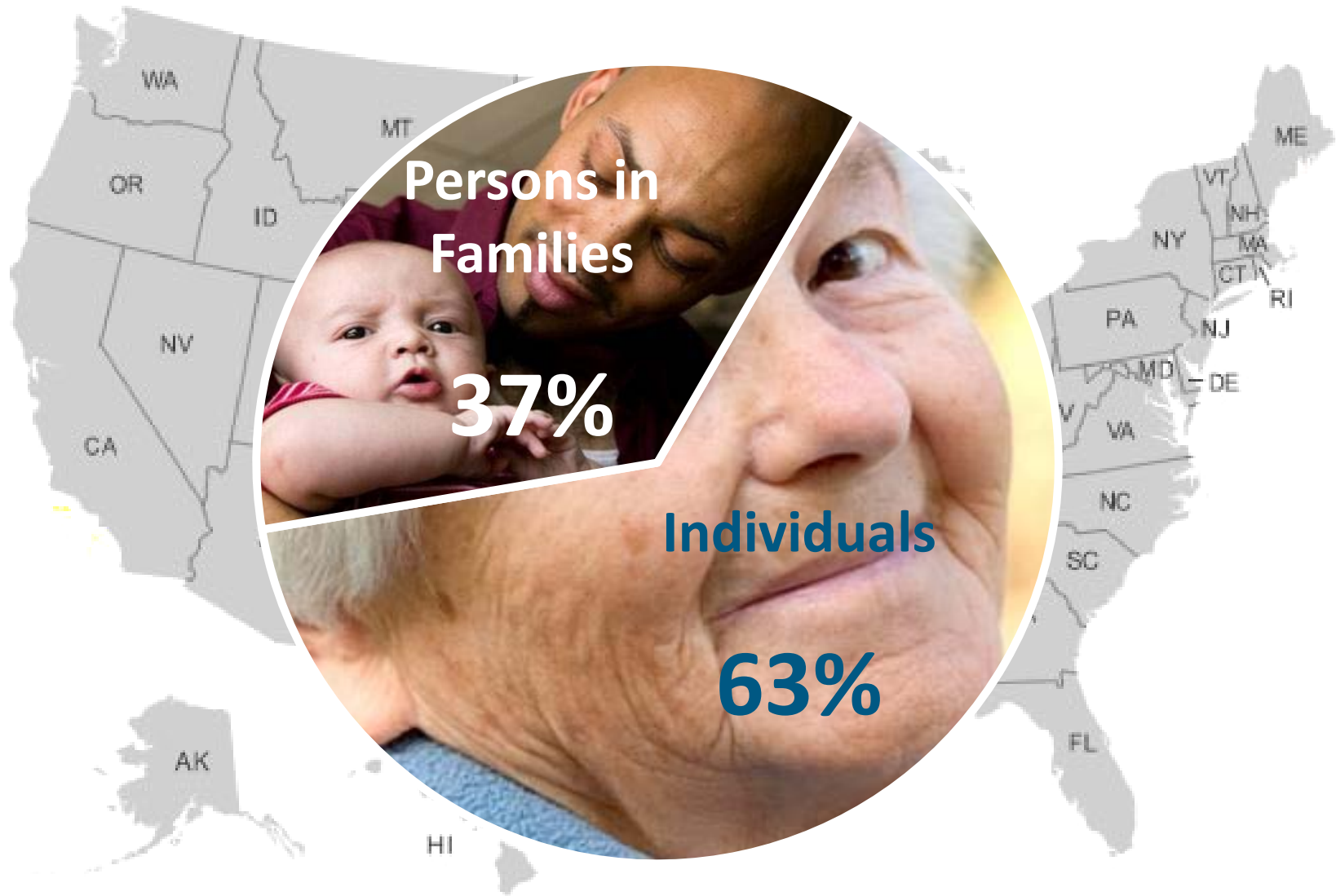


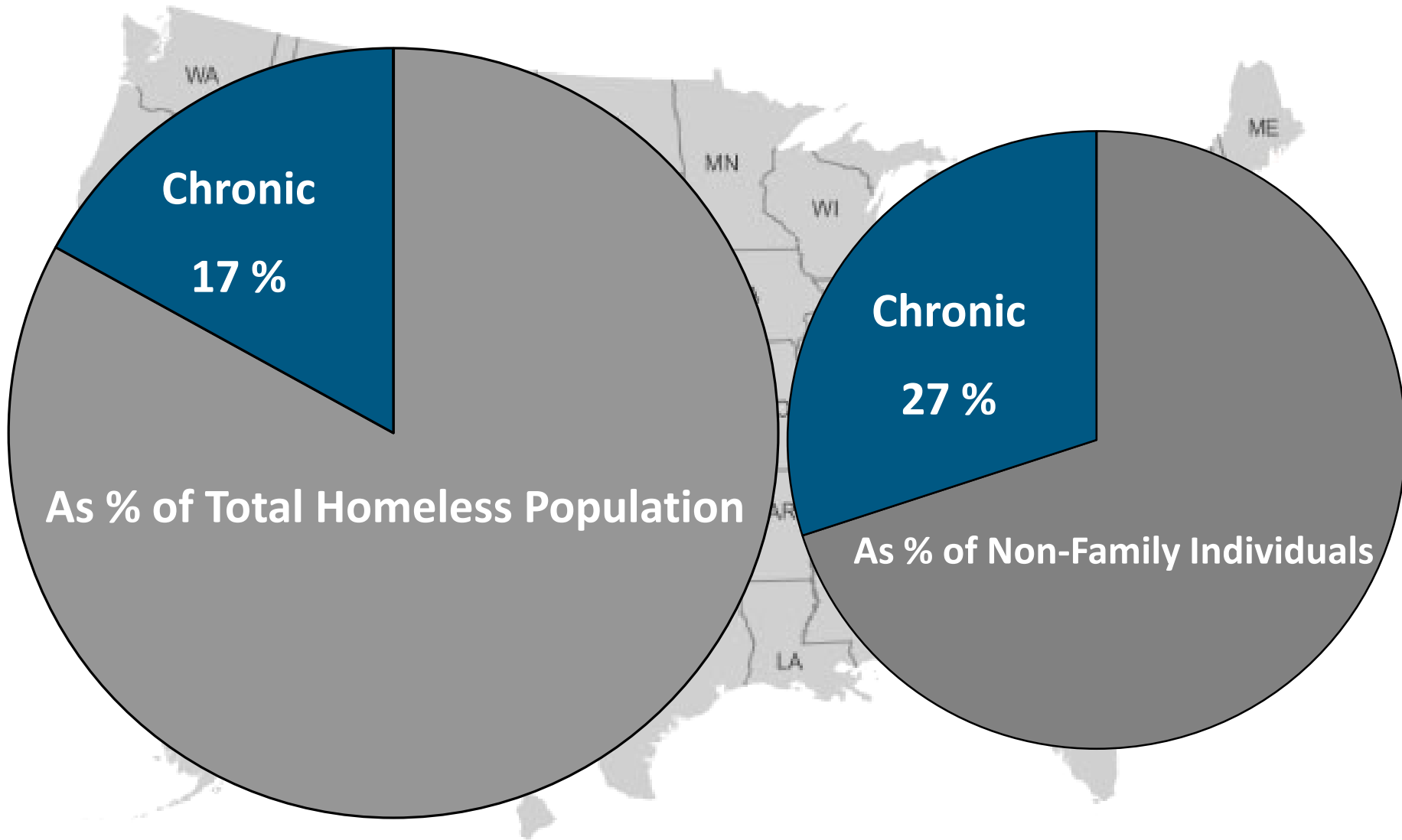




Shelter Photo Credit: San Diego Youth Services.

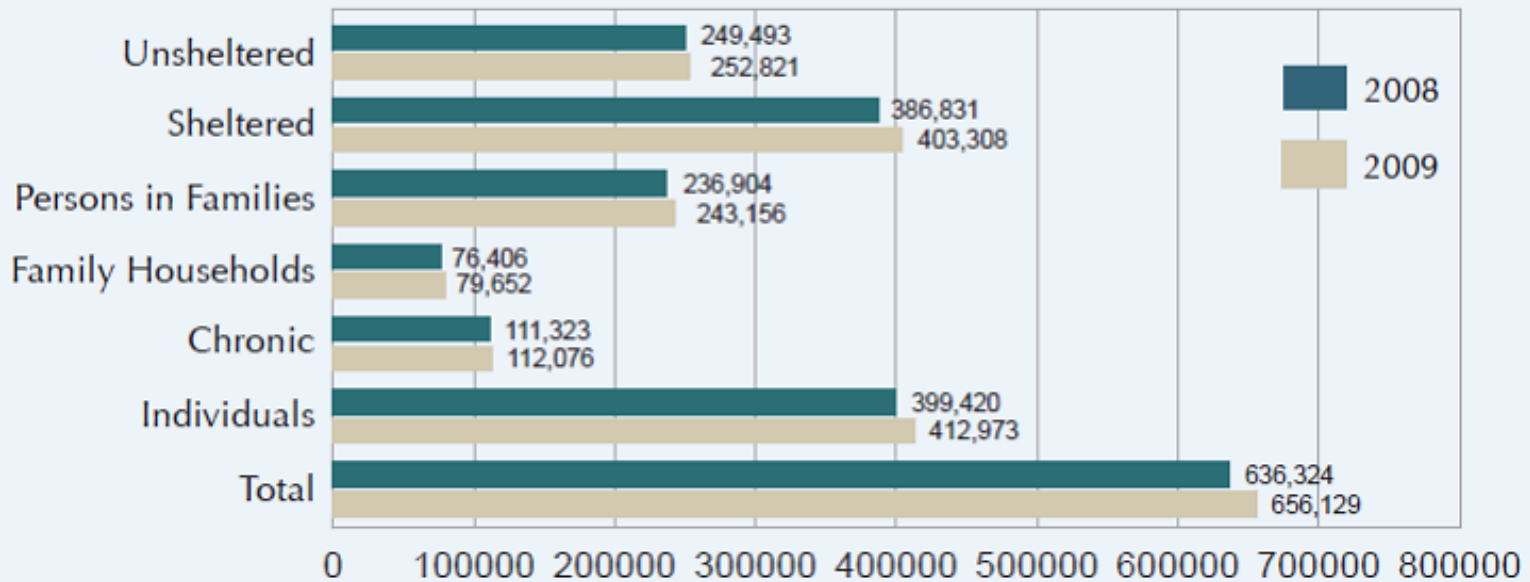




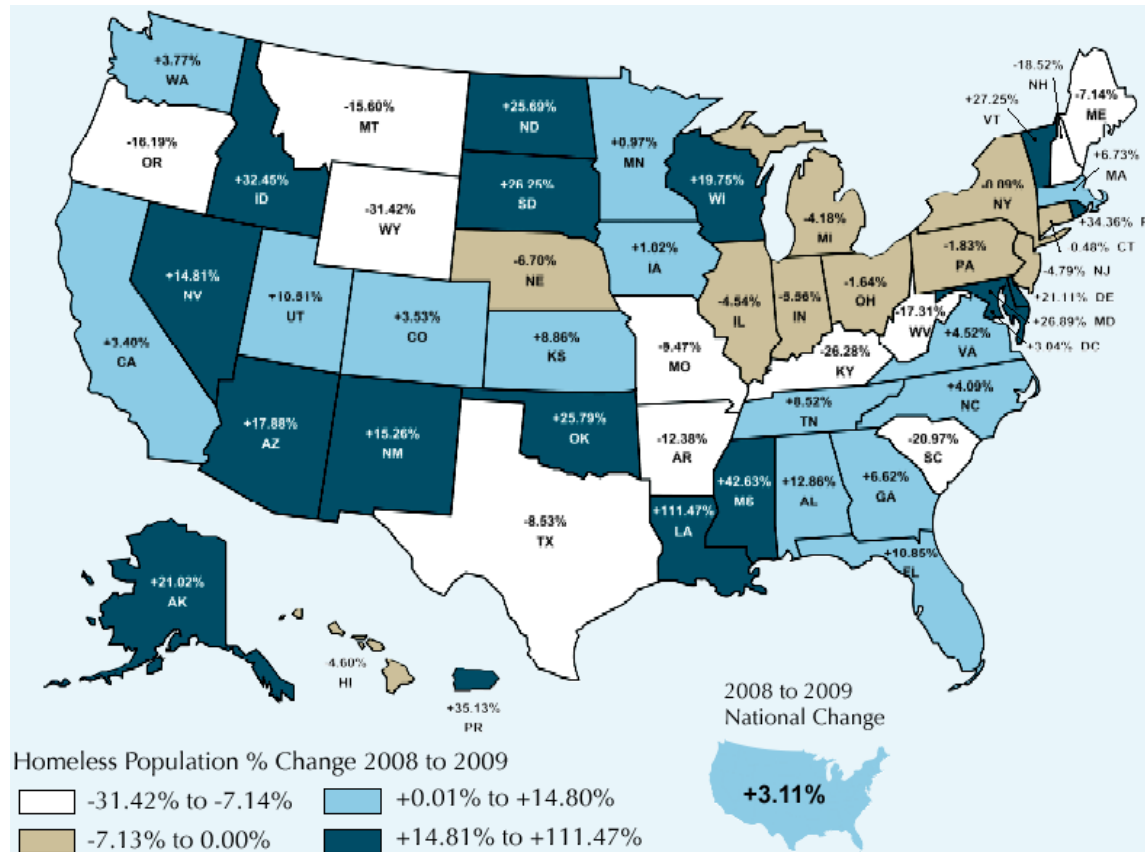


# Changes in homelessness from 2008 to 2009

FIGURE 1.1 People Experiencing Homelessness by Subpopulation, 2008 to 2009

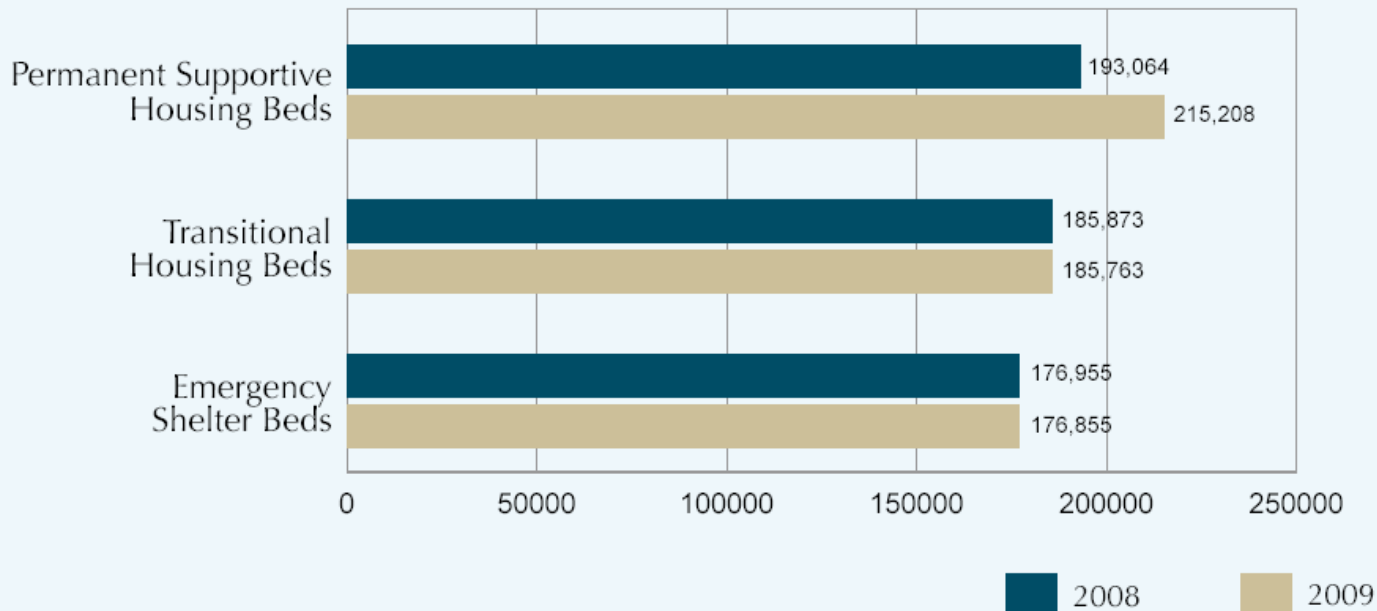


# Changes in homelessness from 2008 to 2009



# Changes in homeless assistance from 2008 to 2009

FIGURE 1.2 Emergency Shelter, Transitional Housing, and Permanent Supportive Housing Inventory, 2008 to 2009



# Changes in economic indicators from 2008 to 2009

TABLE 2.4 National changes among economic indicators

MEASURE	2008	2009	2009
Poor households experiencing severe housing cost burden	5,398,379	5,886,293	+ 9.0 %
Unemployed persons	8,924,000	14,265,000	+ 59.9 %
Average annual income of working poor people	\$9,353	\$9,151	- 2.16 %
Housing units in foreclosure	2,330,483	2,824,674	+ 21.2 %



# Housing affordability varies by state

**TABLE 2.1** States with highest and lowest levels of severe housing cost burden among households below the poverty line, 2009

## STATES WITH HIGHEST LEVELS OF SEVERE HOUSING COST BURDEN

Florida	83.5%
Nevada	81.5%
California	80.7%
Delaware	79.8%
Connecticut	79.7%

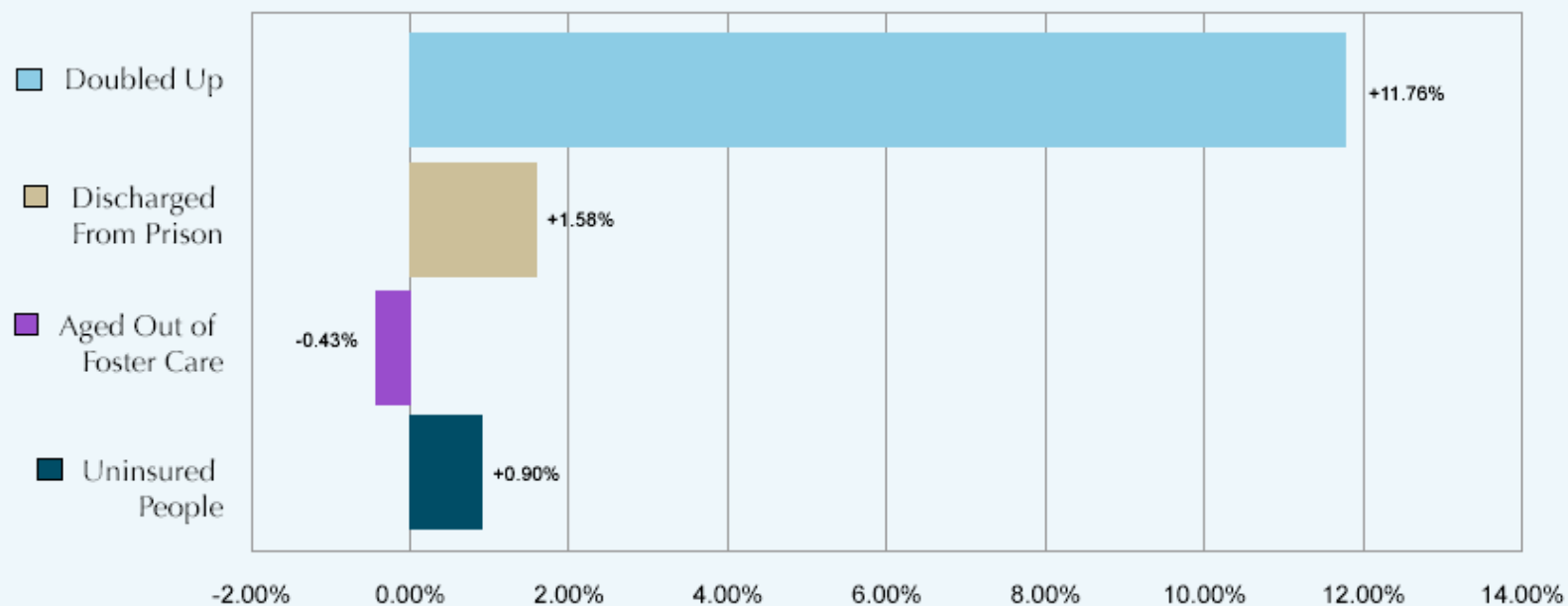
## STATES WITH LOWEST LEVELS OF SEVERE HOUSING COST BURDEN

South Dakota	59.2%
West Virginia	64.1%
Kentucky	64.1%
Maine	64.6%
Montana	65.0%



# Changes in economic indicators from 2008 to 2009

FIGURE 3.1 National Percent Change Among Demographic Indicators



# Demographic indicators: Annual odds of entering shelter:

Group	Odds
General population	1 in 200
Discharged from prison	1 in 11
Doubled up individuals	1 in 10
Youth aged out of foster care	<u>1 in 6</u>



# Many states have been multiply-impacted.

- **California, Florida, and Nevada** have rates of unemployment, foreclosure, cost burden, lack of insurance *and* doubling up above the corresponding national rates.
- **Arizona and Georgia** are also impacted by multiple economic and demographic indicators.



# Questions?

<http://www.endhomelessness.org>  
[msermons@naeh.org](mailto:msermons@naeh.org)

