

# Community Action Network Overview

2010



# CAN Vision

Our richly diverse community will be healthy, safe, educated, just and compassionate where all people work together to achieve their full potential and celebrate their lives.



# CAN Mission

To achieve sustainable social, health, educational and economic **outcomes** through engaging the community in a planning **process** that coordinates and optimizes public, private and individual actions and **resources**.

# CAN Role

- Enhance awareness of issues.
- Strengthen partnerships and connect efforts.
- Facilitate development of collaborative strategies.
- Mobilize action to maximize resources and impact.

# 17 Partners

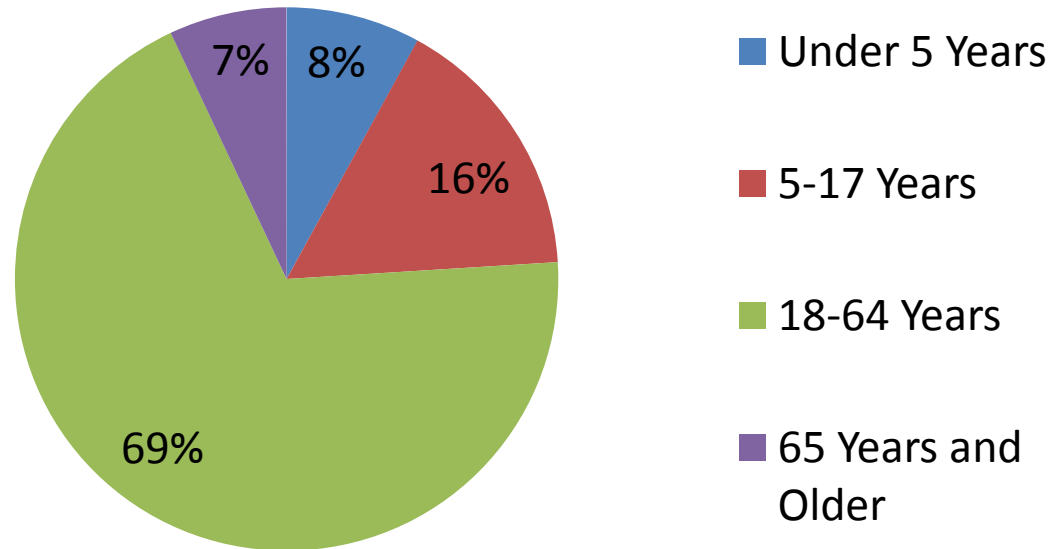
- Austin Area Interreligious Ministries
- Austin Chamber of Commerce
- Austin Community College
- Austin Independent School District
- Austin Travis County Integral Care
- Central Health
- Capital Metro
- City of Austin
- Community Justice Council
- One Voice Central Texas
- Seton Family of Hospitals
- St. David's Foundation
- St. Edward's University
- Travis County
- United Way Capital Area
- University of Texas at Austin
- Workforce Solutions - Capital Area

# 14 Issue Area Groups

- Aging Services Council
- Austin/Travis County Victim Services Task Force
- Basic Needs Coalition
- Behavioral Health Planning Partnership
- Central Texas After-School Network
- Child & Youth Mental Health Planning Partnership
- Ending Community Homelessness Coalition
- Early Education & Care
- HousingWorks
- Intellectual & Developmental Disabilities Coalition
- Literacy Coalition of Central Texas
- Ready by 21
- Reentry Roundtable
- Regional Transit Coordination Committee

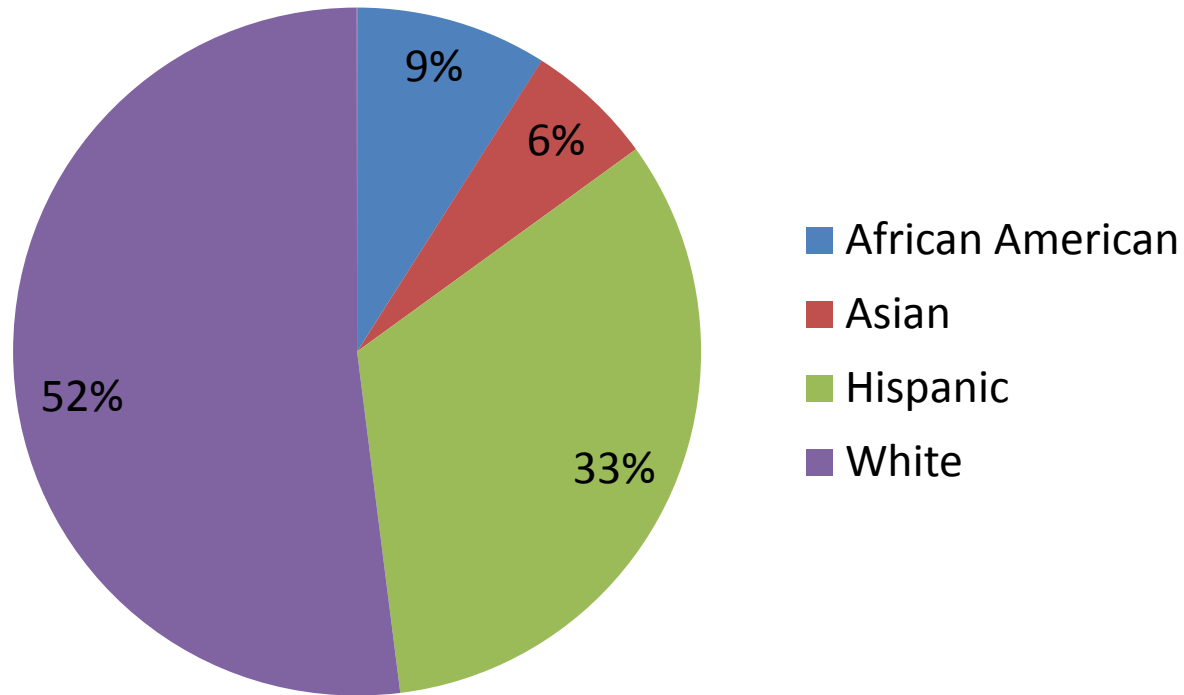
# Travis County Demographics - 2009

- Population – 1,026,158
- Age Demographics



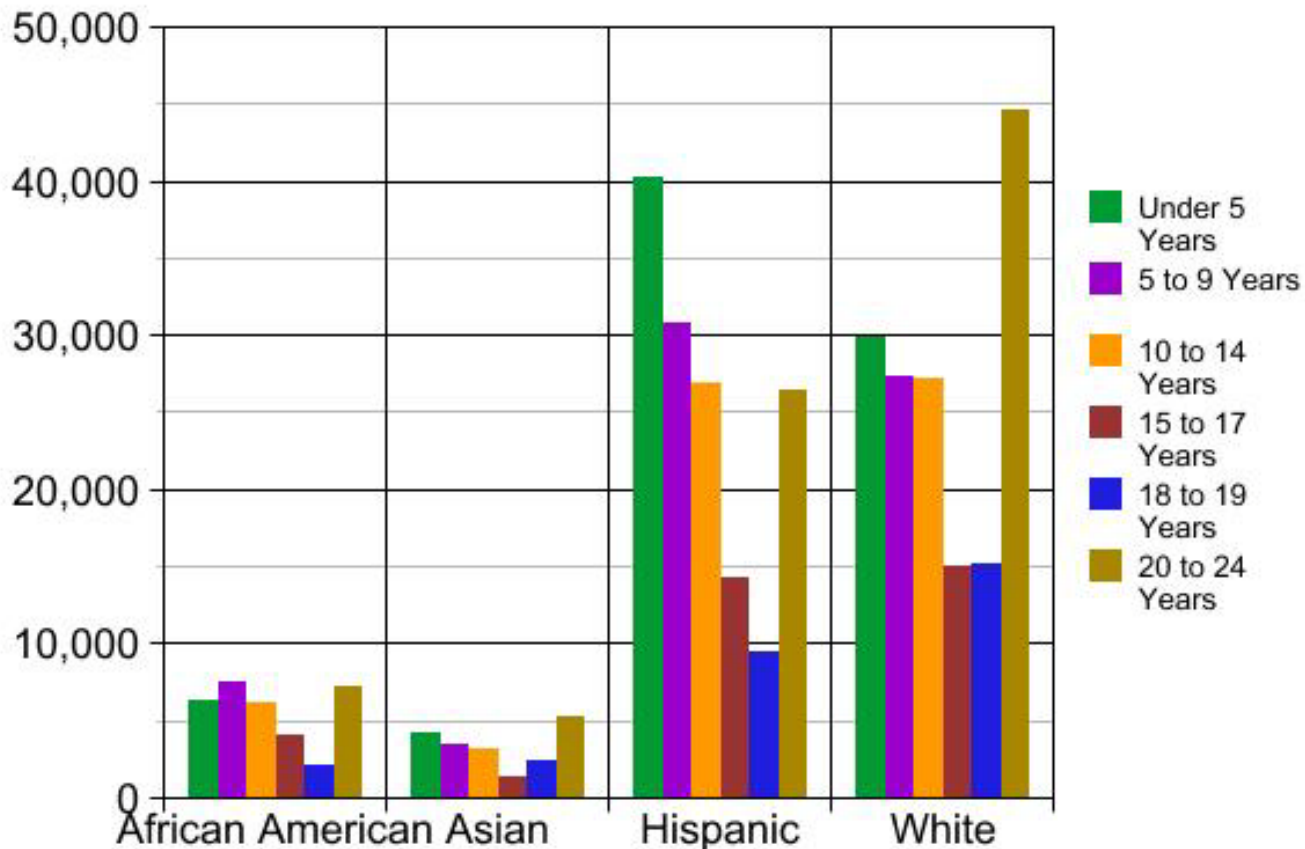
# Travis County Demographics - 2009

## Race/Ethnicity



# Travis County Demographics - 2008

Child and Youth Population in Travis County by Age and Race



American Community Survey, 2008

# Key Indicators of Well-being

(education, financial stability, environment, health, civic engagement)

- **School Readiness**
- **High School Graduation**
- **College Ready**
- **Unemployment**
- **Low-Income**
- **Housing Cost Burdened**
- **Vehicle Miles Traveled**
- **Homelessness**
- **Uninsured**
- **Mental Health**
- **Smoking**
- **Obesity**
- **Air Quality**
- **Violent Crime**
- **Arrest Proportionality**
- **Civic Engagement**

# Education Indicators

- **School Readiness**
- **High School Graduation**
- **College Ready**
- Unemployment
- Low-Income
- Housing Cost Burdened
- Vehicle Miles Traveled
- Homelessness
- Uninsured
- Mental Health
- Smoking
- Obesity
- Air Quality
- Violent Crime
- Arrest Proportionality
- Civic Engagement

# School Readiness

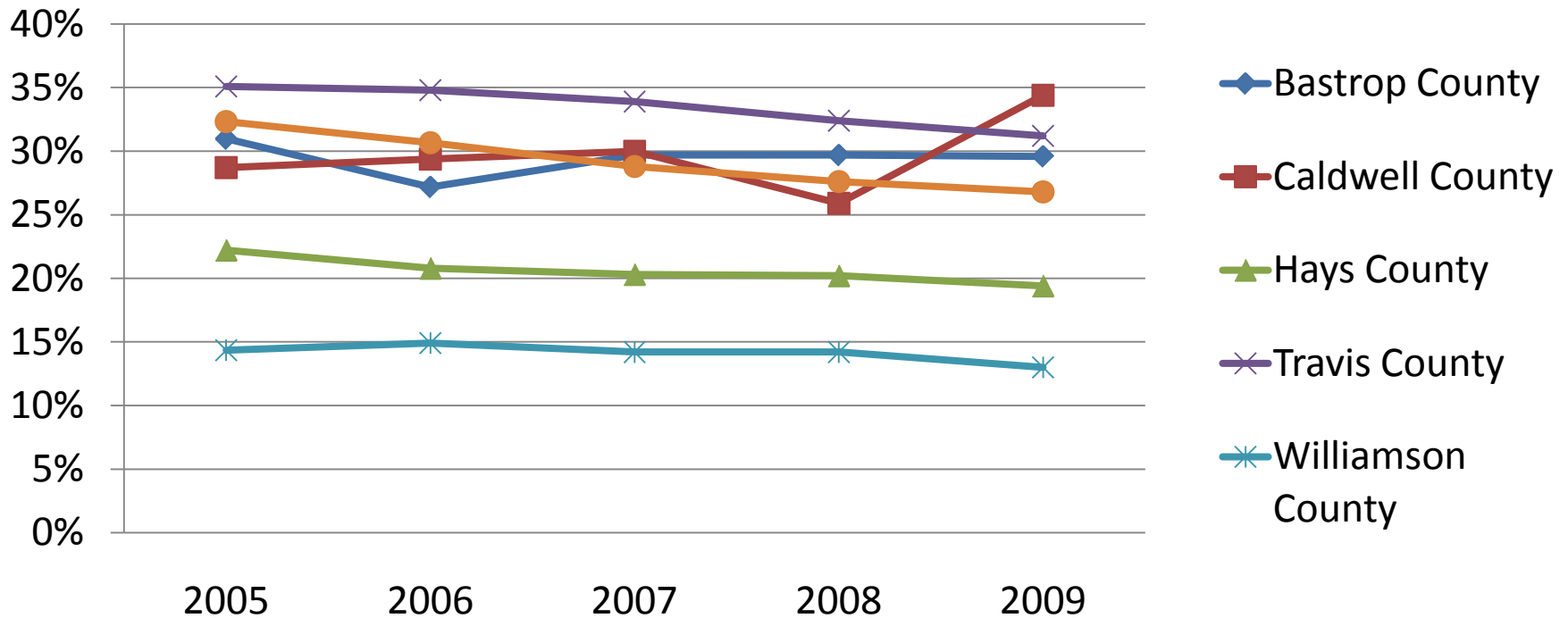
- Data on school readiness in our community will be available in the near future.



- Family risk factors associated with poor school readiness include low maternal education, family poverty, and having parents whose primary language is not English

# School Readiness

## % of births to mothers with no high school diploma



Source: Texas Department of State Health Services, Center for Health Statistics

# School Readiness

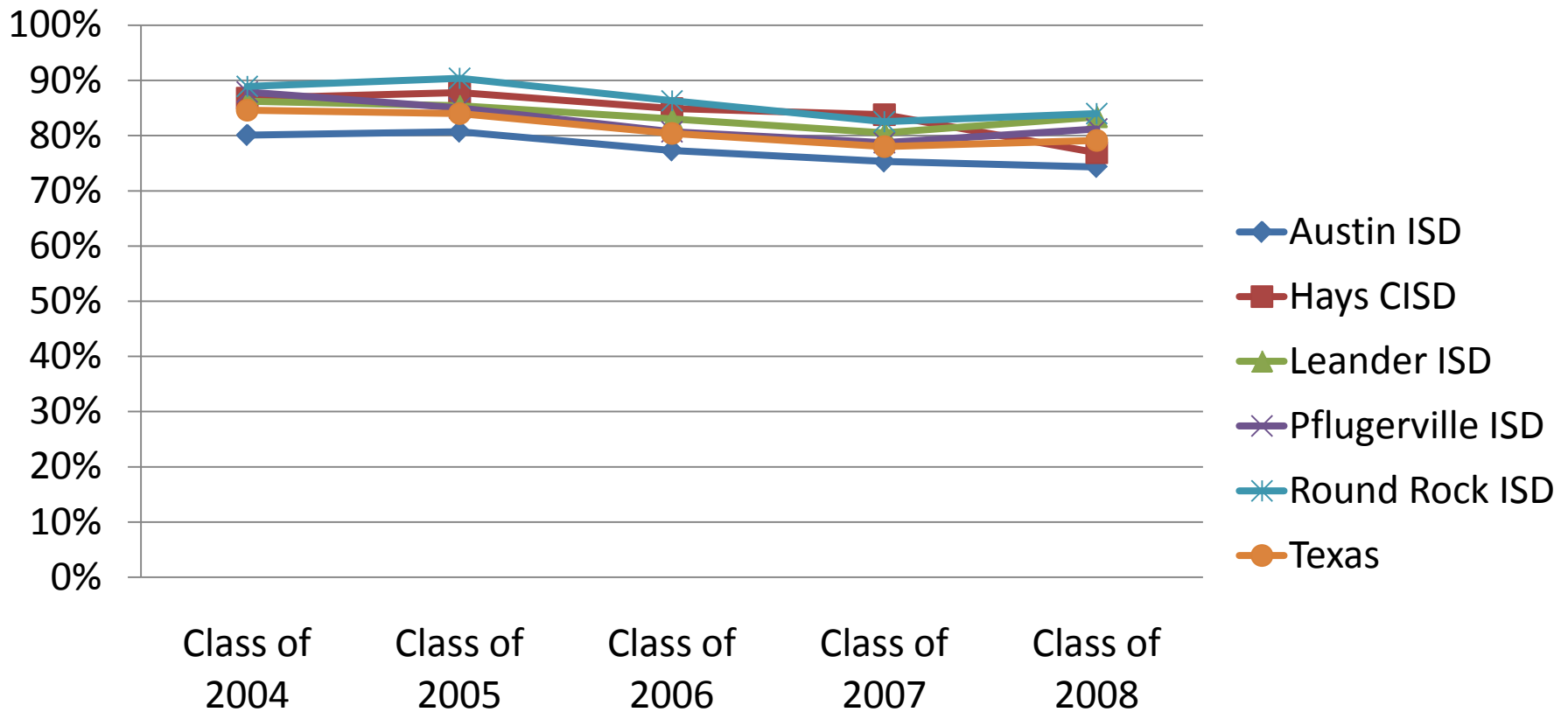
- 3 out of 5 Hispanic children born in Travis County have mothers with no high school diploma



- This compares to:
  - 1 out of 5 African Americans
  - 1 out of 10 children who are White or of other races

# High School Graduation

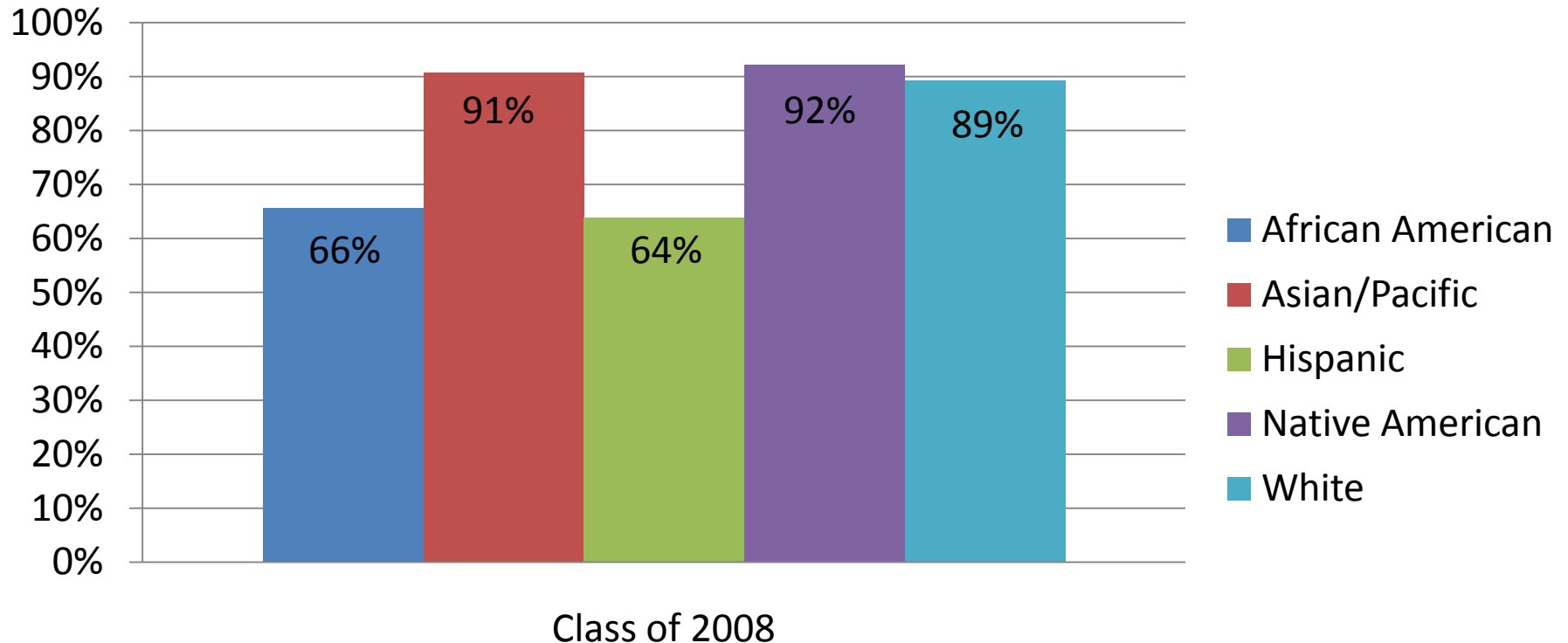
## Four Year Graduation Rate



Source: Texas Education Agency

# High School Graduation

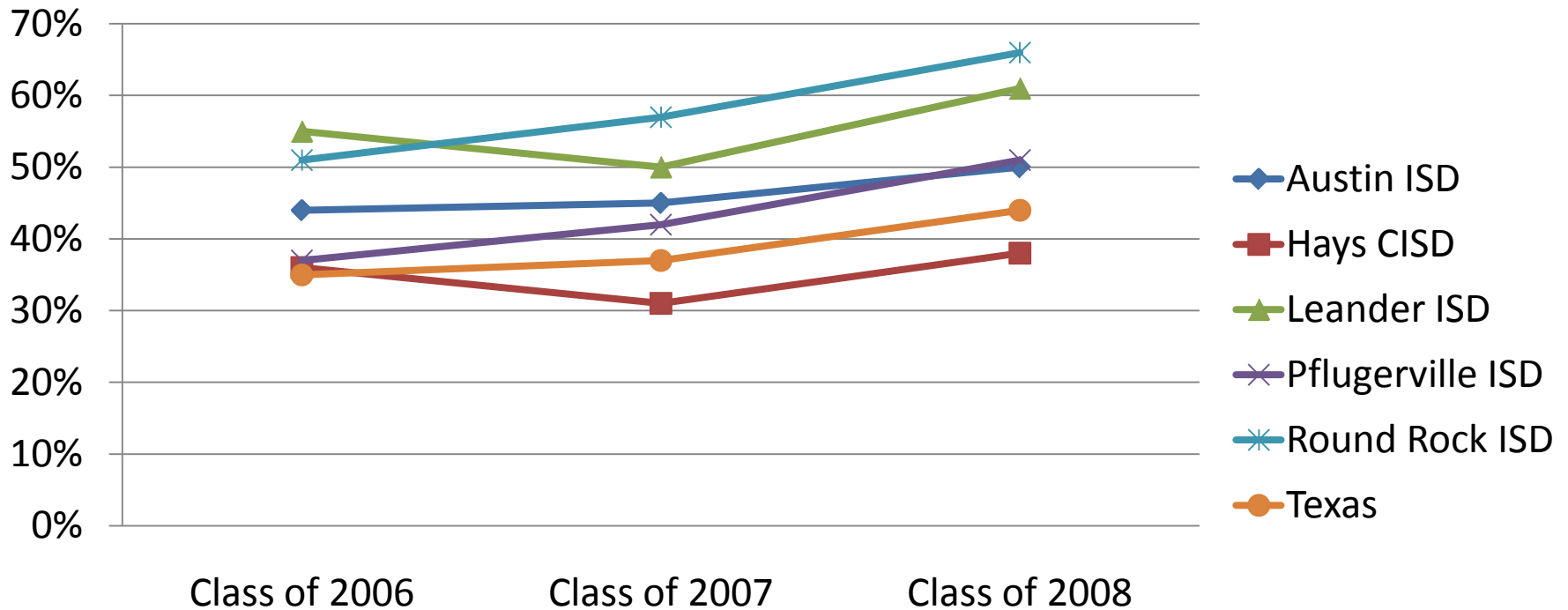
## Four Year Graduation Rate for Austin ISD by Race/Ethnicity



Source: Texas Education Agency

# College Ready

## % of High School Graduates that are College Ready



Source: Texas Education Agency

# College Ready

- 1 out of 3 Hispanic Austin ISD graduates are college ready
- This compares to:
  - 1 out of 4 African Americans
  - 7 out of 10 Whites



# What more needs to be done?

## **Recommendations by Success by 6 at CAN 2/18/10 and 5/14/10 forums/meetings:**

- Include child care in planning efforts
- Provide family friendly child care subsidy policies
- Support quality early care through better qualified and better paid workforce
- Support accreditation thru NAEYC, TX Rising Star
- Fund parenting classes/home visits for vulnerable families

# What more needs to be done?

## **Recommendations by Austin ISD, E3 Alliance, City of Austin, Travis County, Truancy Plus Task Force (2/18)**

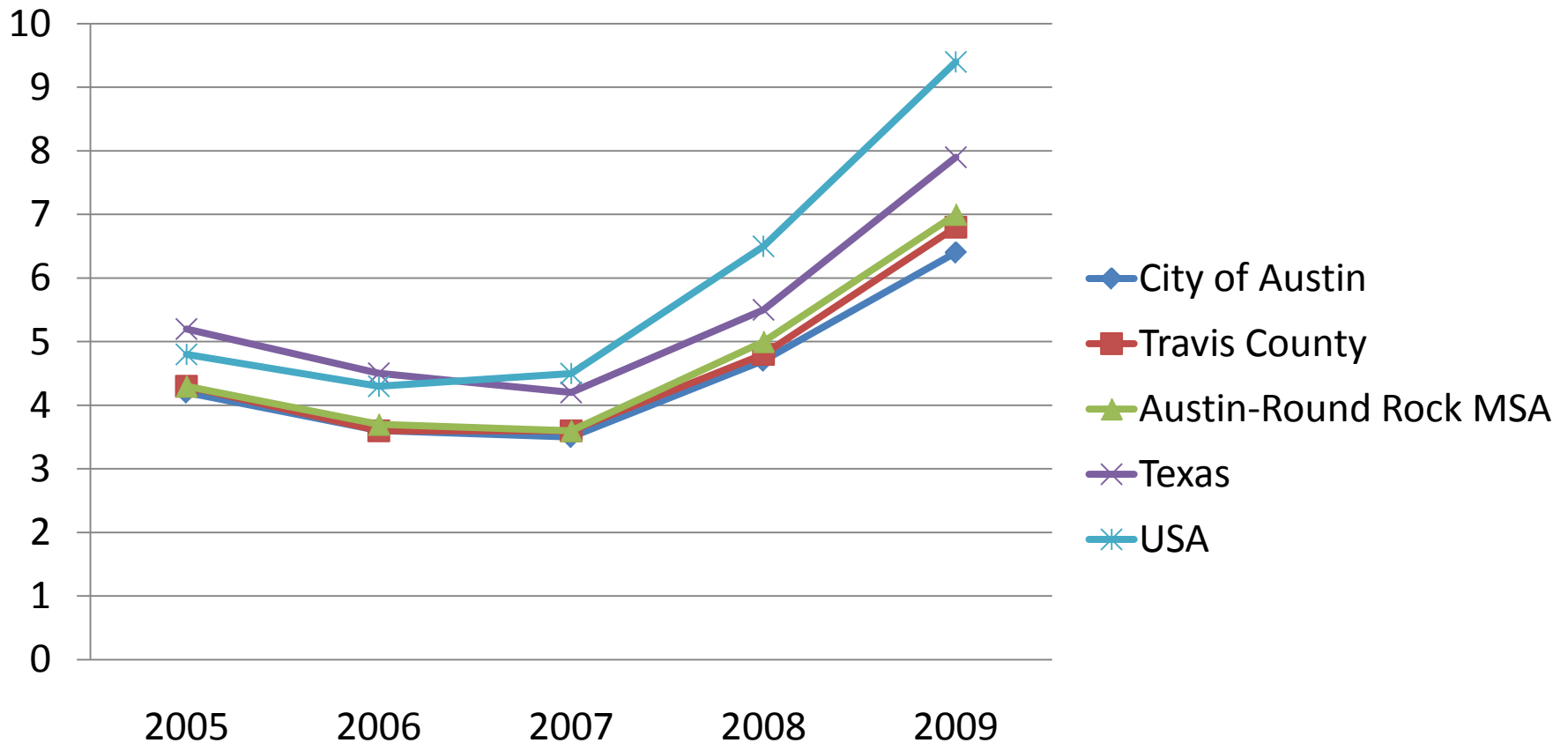
- Provide academic support and enrichment to students who are falling behind
- Address attendance and truancy issues, providing support to parents/students
- Encourage cooperation between school districts, juvenile justice and court systems
- Increase capacity of events that help students and parents understand the importance of education
- Support AISD's Strategic Plan implementation

# Financial Stability

- School Readiness
- High School Graduation
- College Ready
- **Unemployment**
- **Low-Income**
- Housing Cost Burdened
- Vehicle Miles Traveled
- Homelessness
- Uninsured
- Mental Health
- Smoking
- Obesity
- Air Quality
- Violent Crime
- Arrest Proportionality
- Civic Engagement

# Unemployment

## Unemployment Rates - November



Source: Texas Labor Market Information

# Unemployment

## Unemployment by Race/Ethnicity

- African American – 9%
- Hispanic – 6%
- White – 4%

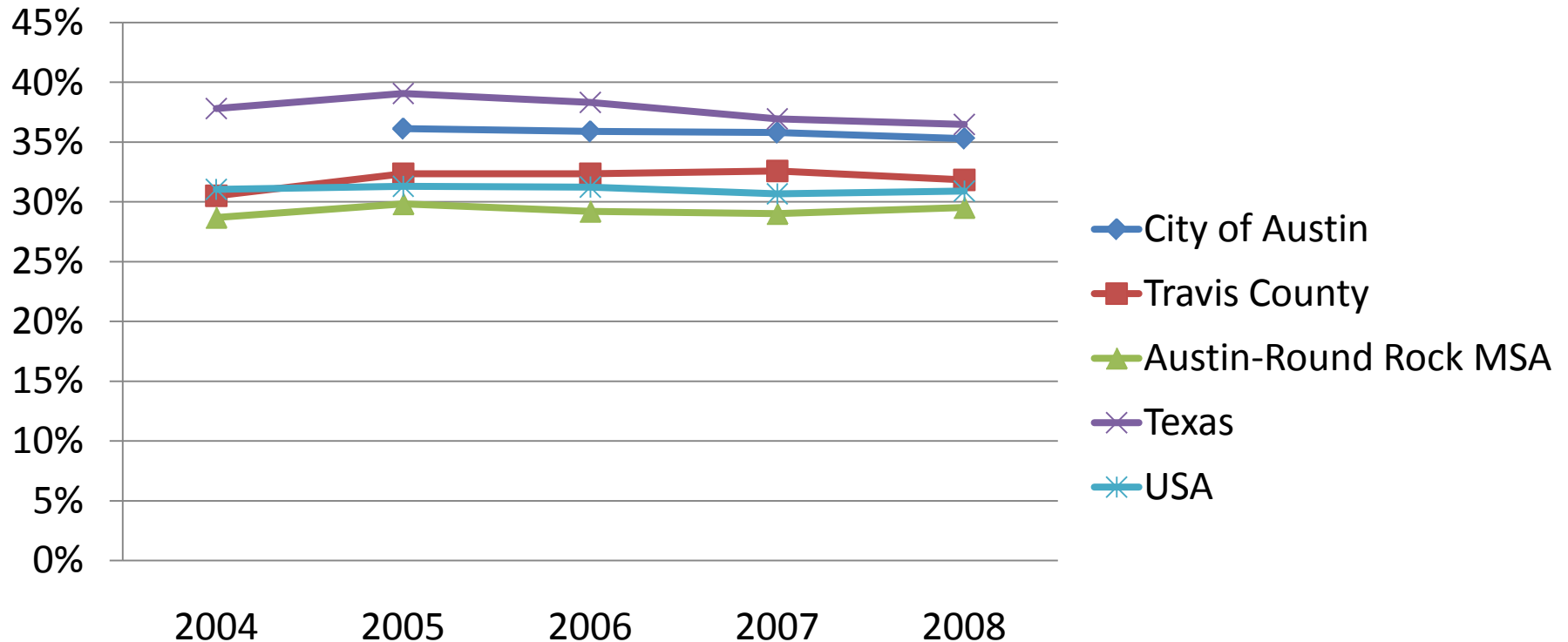
# Low-Income

- A family must earn at least 2x times the federal poverty level to meet basic needs
- A family is considered to be low-income if they earn at or below 200% of the federal poverty level or \$42,400 for a family of four



# Low Income

## % of individuals living below 200% of the federal poverty level



Source: American Community Survey, 1 Yr. Estimates

# What more needs to be done?

## **Recs by Workforce Solutions-Capital Area, Literacy Coalition of Central Texas, ACC (5/14, 7/19)**

- Develop region-wide human capital strategy with a regional economic growth strategy
- Increase awareness of region's driver industries
- Define and support career ladders that take lower skilled workers to higher wage, high demand rungs
- Increase enrollment/completion rates in post-secondary certificate and degree programs that match labor needs
- Train social service workers to identify those with literacy needs and to refer them to services; increase ABE/ESL

# What more needs to be done?

## **Recs by Center for Public Policy Priorities 1/11/10**

- Increase access to banking services
- Restrict or eliminate predatory lending practices
- Increase access for low-income to jobs and training
- Increase post-secondary opportunities and completion for low-income
- Increase state revenue to create a system that is adequate and fair
- Ensure those who are eligible are enrolled and receiving benefits

# Environment

- School Readiness
- High School Graduation
- College Ready
- Unemployment
- Low-Income
- Housing Cost Burdened
- **Vehicle Miles Traveled**
- Homelessness
- Uninsured
- Mental Health
- Smoking
- Obesity
- **Air Quality**
- Violent Crime
- Arrest Proportionality
- Civic Engagement

# Vehicle Miles Traveled

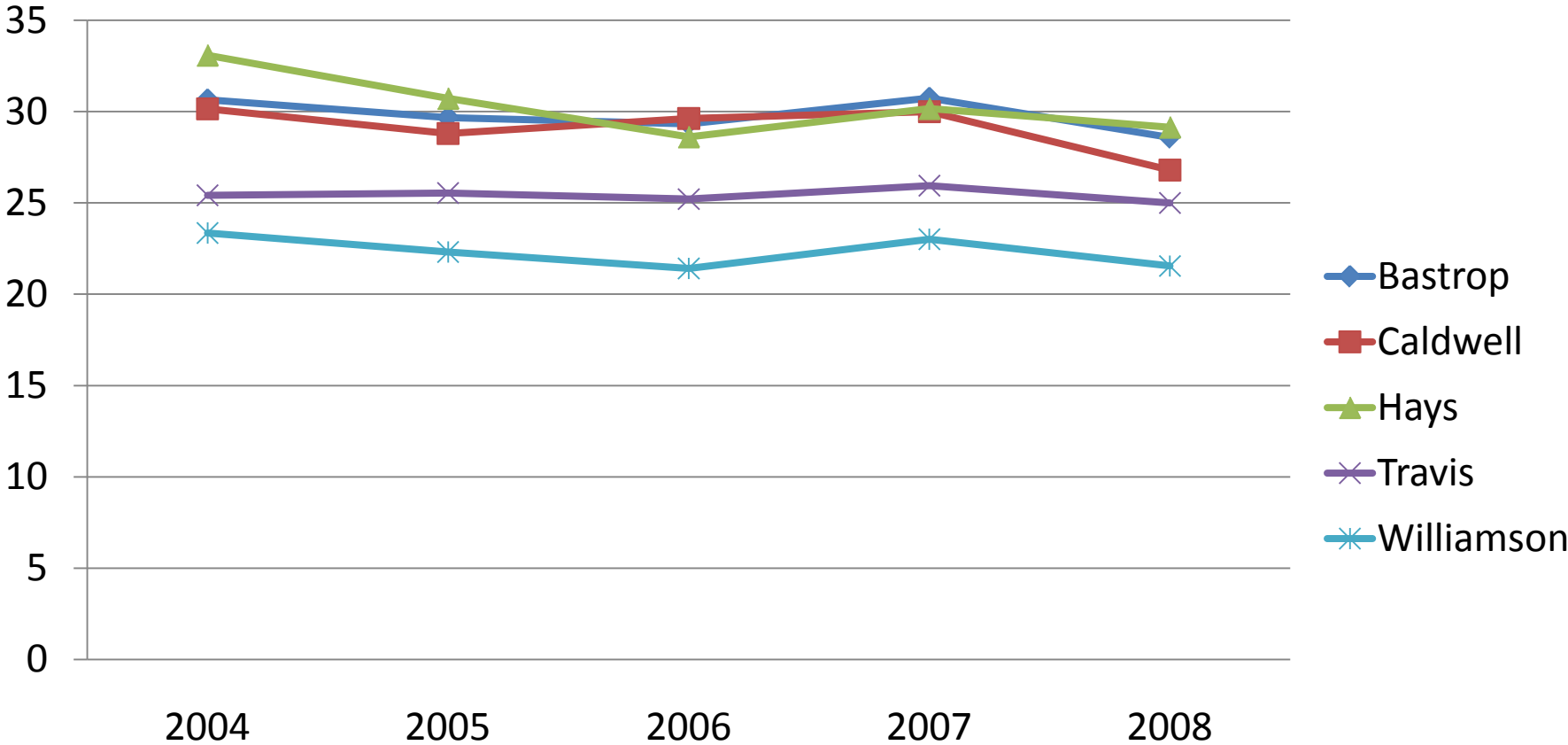
- Vehicle miles traveled (VMT) per capita divides the total number of miles traveled in Travis County by the population.



- It includes all vehicle miles traveled from a family trip to the grocery store to a freight truck passing through the county on the highway.

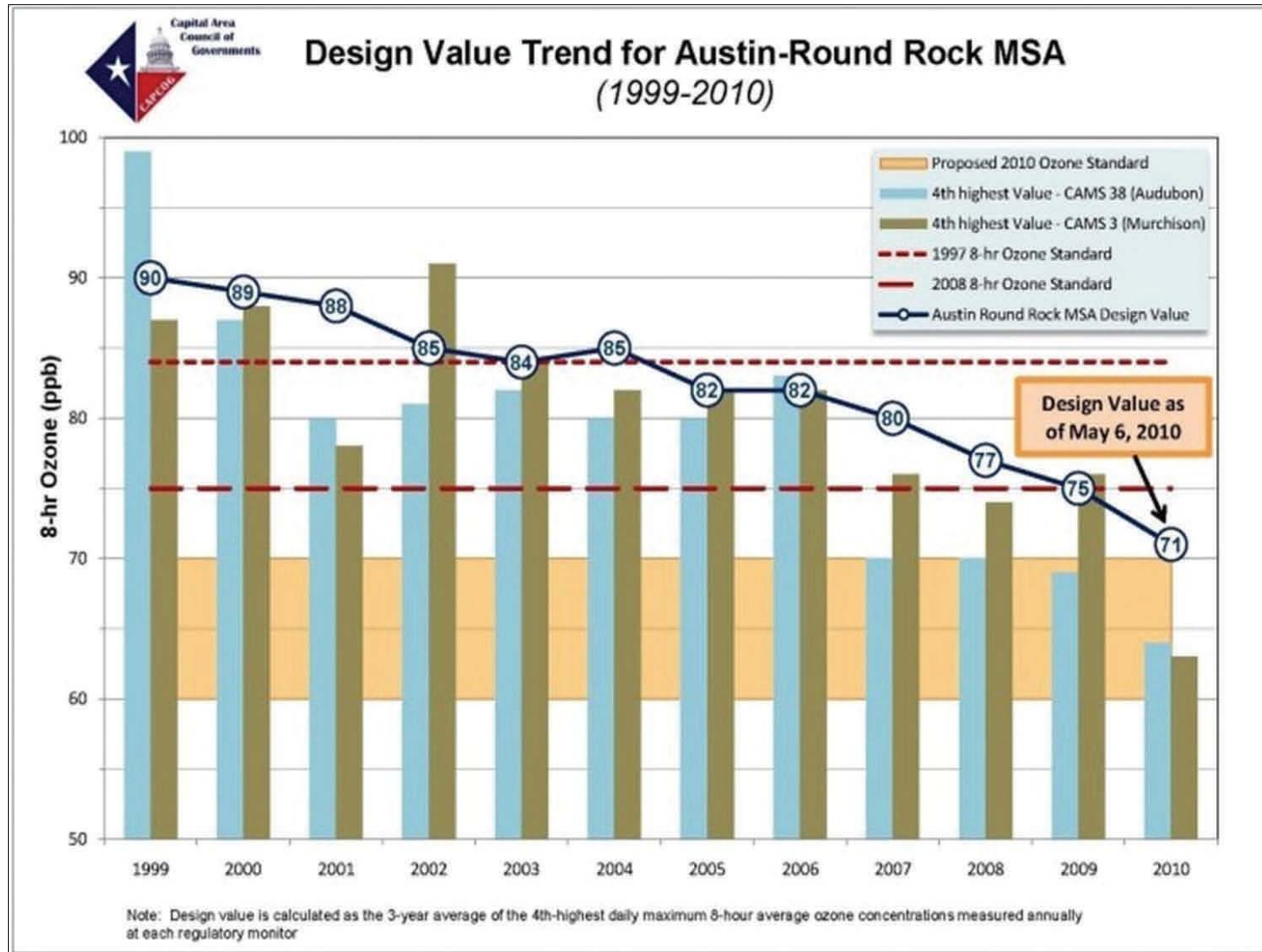
# Vehicle Miles Traveled

## Daily Vehicle Miles Traveled Per Capita



Source: Texas Department of Transportation, Texas State Data Center

# Air Quality



# What more needs to be done?

## **Recs by City of Austin Air Quality Program, Clean Air Coalition (CAPCOG & CAMPO), RTCC 5/17/10;**

Employers and Government can...

- start Ozone Watch & Commute Solutions programs
- allow compressed work-week, flexible schedules, and tele-commuting
- eliminate free parking and encourage single-car alternatives (promote public transit)
- manage fleet & opt for hybrids/fuel efficient vehicles
- minimize travel for meetings & tele-conference

# What more needs to be done?

## Recs by City of Austin Air Quality Program, Clean Air Coalition (CAPCOG & CAMPO) 5/17/10

Individuals can...

- drive less and maintain vehicles
- fuel vehicles in the evening and idle less
- turn off unused electronic equipment
- bike, carpool, walk or work or take the bus
- improve and monitor you “carbon footprint”

Encourage land use planning that mixes land use

Site facilities (especially public ones) w/ transit in mind

# Health

- School Readiness
- High School Graduation
- College Ready
- Unemployment
- Low-Income
- Housing Cost Burdened
- Vehicle Miles Traveled
- Homelessness
- **Uninsured**
- **Mental Health**
- **Smoking**
- **Obesity**
- Air Quality
- Violent Crime
- Arrest Proportionality
- Civic Engagement

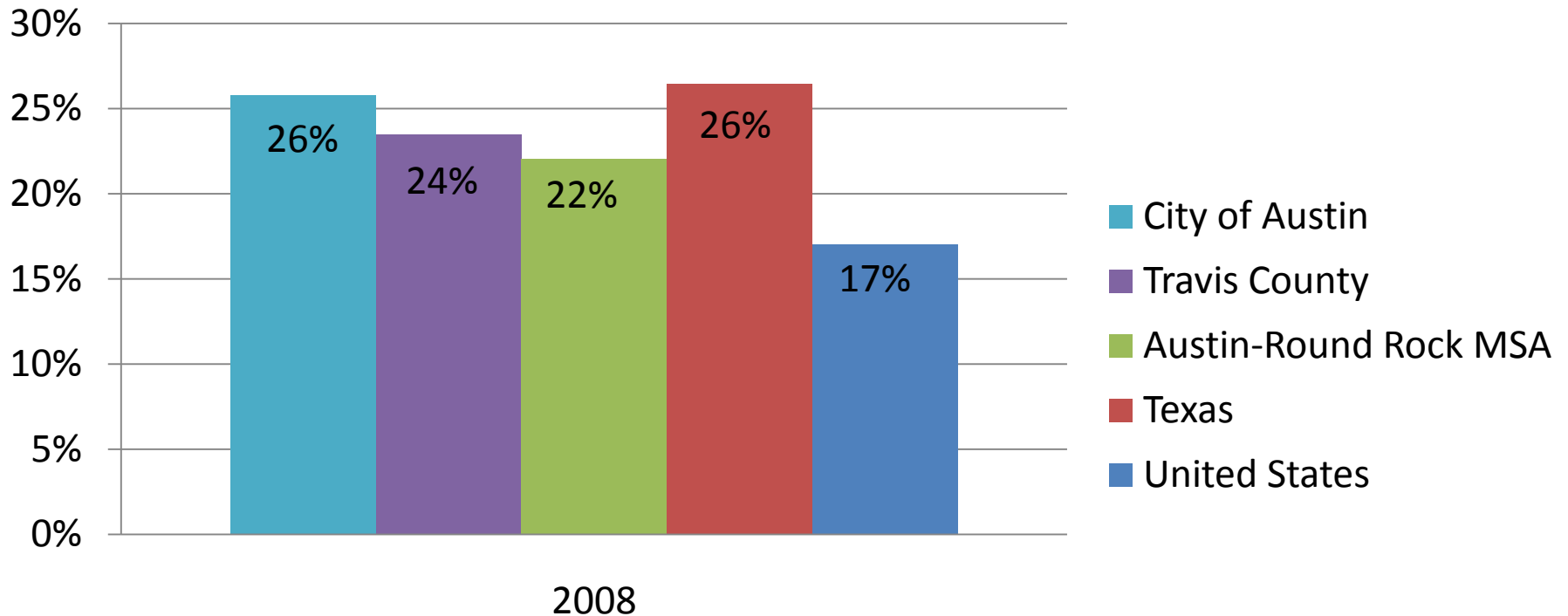
# Uninsured

Texas has the highest percentage of uninsured persons in the Nation



# Uninsured

## % of people under the age of 65 that are uninsured



Source: American Community Survey

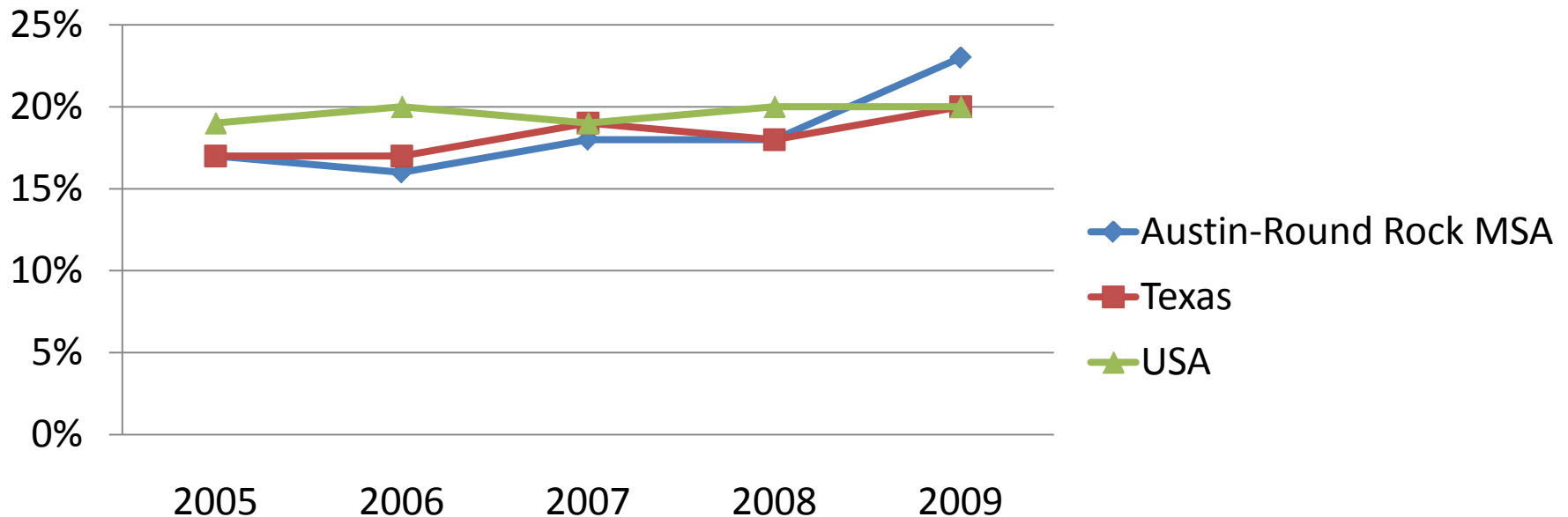
# Poor Mental Health

Adults who report five or more days of stress, depression, or problems with emotions in the last 30 days are considered to be in poor mental health



# Poor Mental Health

## % of Adults Reporting 5 or More Poor Mental Health Days within the Past Month



Source: Texas Behavioral Risk Factor Surveillance System

# Smoking

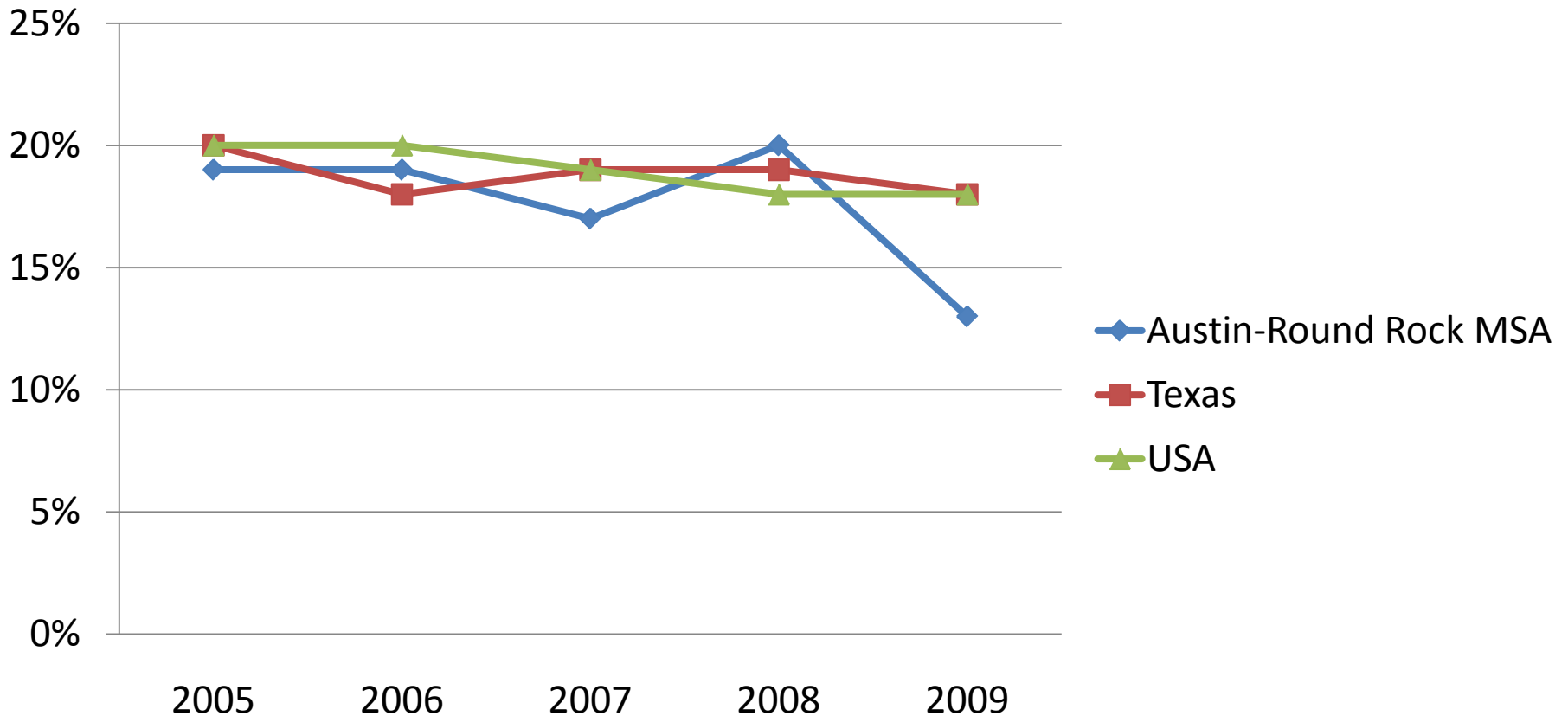
## The Economic Burden of Tobacco Use



- \$96 billion per year in medical expenditures
- \$97 billion per year in lost productivity

# Smoking

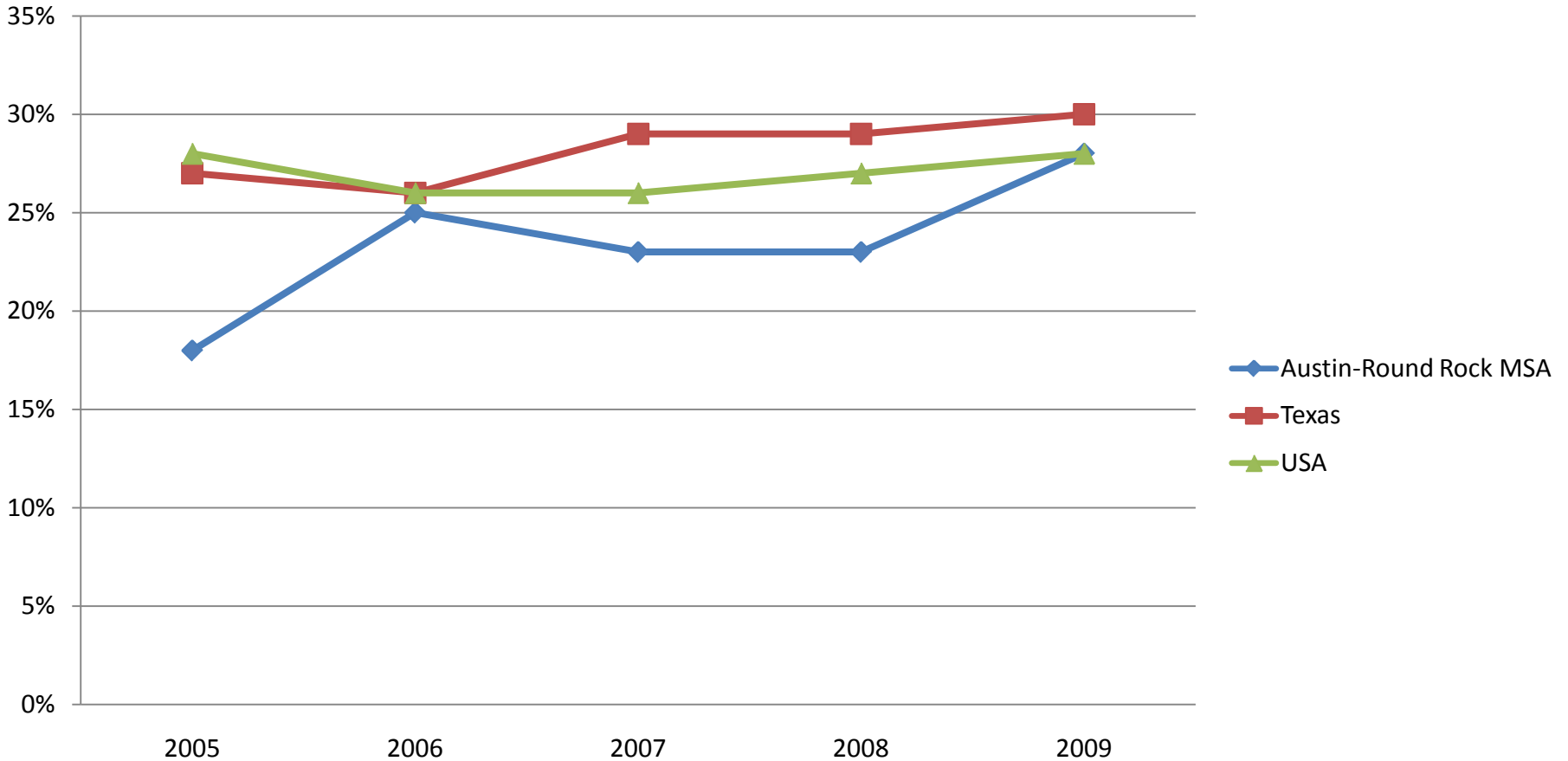
## % of adults who are current smokers



Source: Texas Behavioral Risk Factor Surveillance System

# Obesity

**% of adults who are obese**



Source: Texas Behavioral Risk Factor Surveillance System

# Obesity

- More than 1 out of 3 Hispanics in Central Texas are obese
- This compares to:
  - 1 out of 2 African Americans
  - 1 out of 4 Whites

# What more needs to be done?

## **Recs by Central Health 8/16/10 - - CAN will hear mental health recs in September**

- Continue CAN work to maximize enrollment in public-benefit program (e.g. targeting single-mothers)
- Recruit healthcare providers into the community
- Support educational opportunities for health care providers (physicians, mid-level providers, and nurses)

# What more needs to be done?

## **Recs by Central Health, Austin/Travis County Health & Human Services Dept. (Chronic Health Coalition)**

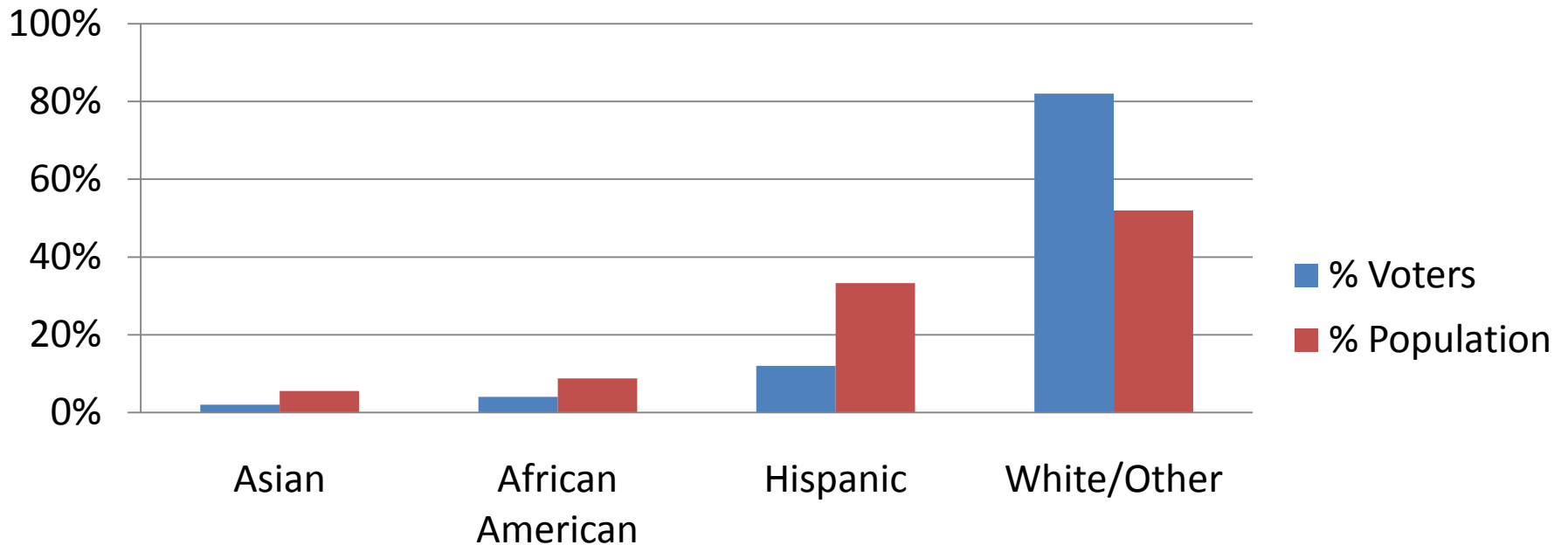
- 100% tobacco-free policies, including tobacco-free worksites, university/school campuses, parks, and social services
- Increase availability of affordable health food and beverages and promote healthy choices
- Safe communities that support physical activity
- Promote physical activity/limiting sedentary activity among children and youth

# Civic Engagement

- School Readiness
- High School Graduation
- College Ready
- Unemployment
- Low-Income
- Housing Cost Burdened
- Vehicle Miles Traveled
- Homelessness
- Uninsured
- Mental Health
- Smoking
- Obesity
- Air Quality
- Violent Crime
- Arrest Proportionality
- **Civic Engagement**

# Civic Engagement

## Voter Demographics Compared to Population Demographics in Travis County, 2009



Source: Opinion Analysts, U.S. Census Bureau

# Questions?

Vanessa Sarria, Executive Director

(512) 414-0325 [vsarria@austinisd.org](mailto:vsarria@austinisd.org)

[www.caction.org](http://www.caction.org)